



PDXDC1 Polyclonal Antibody

Catalog No	BYab-14900
Isotype	IgG
Reactivity	Human;Mouse;Rat
Applications	WB;IHC;IF;ELISA
Gene Name	PDXDC1
Protein Name	Pyridoxal-dependent decarboxylase domain-containing protein 1
Immunogen	The antiserum was produced against synthesized peptide derived from human PDXDC1. AA range:677-726
Specificity	PDXDC1 Polyclonal Antibody detects endogenous levels of PDXDC1 protein.
Formulation	Liquid in PBS containing 50% glycerol, 0.5% BSA and 0.02% sodium azide.
Source	Polyclonal, Rabbit,IgG
Purification	The antibody was affinity-purified from rabbit antiserum by affinity-chromatography using epitope-specific immunogen.
Dilution	WB: 1/500 - 1/2000. IHC: 1/100 - 1/300. ELISA: 1/10000.. IF 1:50-200
Concentration	1 mg/ml
Purity	≥90%
Storage Stability	-20°C/1 year
Synonyms	PDXDC1; KIAA0251; Pyridoxal-dependent decarboxylase domain-containing protein 1
Observed Band	87kD
Cell Pathway	Golgi apparatus,cell-cell adherens junction,intracellular membrane-bounded organelle,
Tissue Specificity	Bone marrow,Brain,Cervix,Epithelium,Lung,Placenta,T
Function	cofactor:Pyridoxal phosphate.,PTM:Phosphorylated upon DNA damage, probably by ATM or ATR.,similarity:Belongs to the group II decarboxylase family.,
Background	cofactor:Pyridoxal phosphate.,PTM:Phosphorylated upon DNA damage, probably by ATM or ATR.,similarity:Belongs to the group II decarboxylase family.,
matters needing attention	Avoid repeated freezing and thawing!

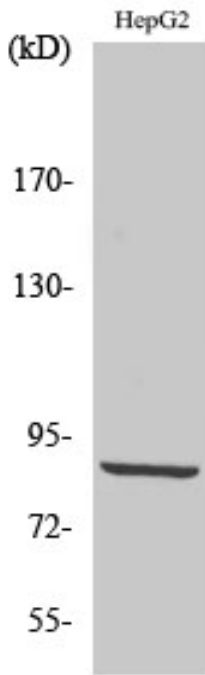
Nanjing BYabscience technology Co.,Ltd



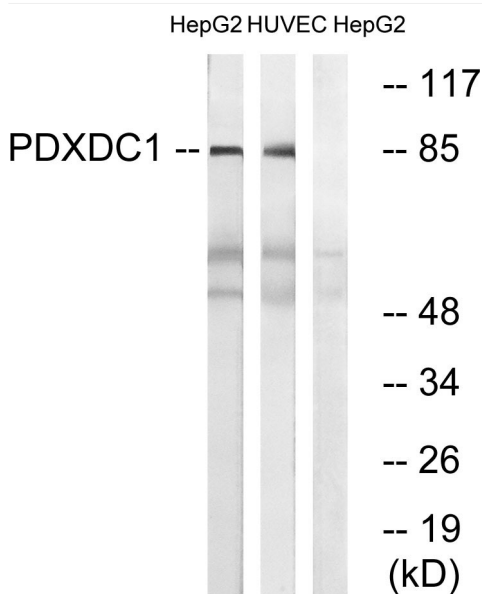
Usage suggestions

This product can be used in immunological reaction related experiments. For more information, please consult technical personnel.

Products Images

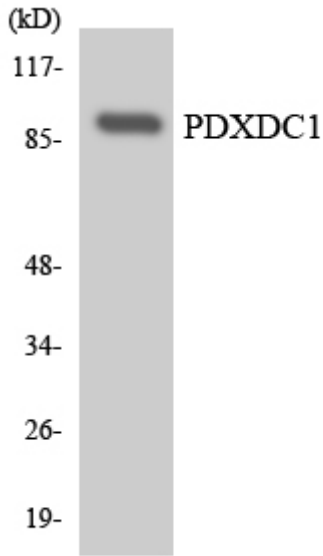


Western Blot analysis of various cells using PDXDC1 Polyclonal Antibody

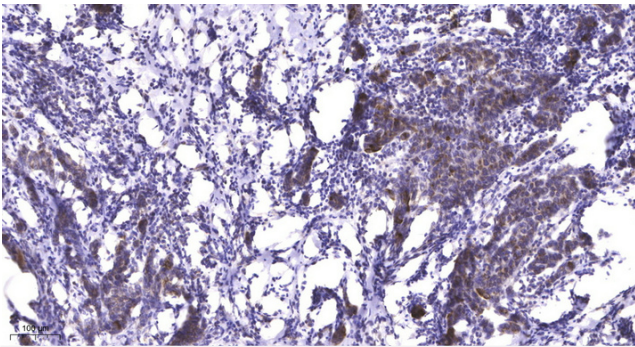


Western blot analysis of lysates from HepG2 and HUVEC cells, using PDXDC1 Antibody. The lane on the right is blocked with the synthesized peptide.

Nanjing BYabscience technology Co.,Ltd



Western blot analysis of the lysates from HeLa cells using PDXDC1 antibody.



Immunohistochemical analysis of paraffin-embedded human Breast cancer. 1, Antibody was diluted at 1:200(4° overnight). 2, Tris-EDTA, pH9.0 was used for antigen retrieval. 3, Secondary antibody was diluted at 1:200(room temperature, 45min).