



OTUD2 Polyclonal Antibody

Catalog No	BYab-14883
Isotype	IgG
Reactivity	Human;Rat;Mouse;
Applications	WB;ELISA
Gene Name	YOD1
Protein Name	Ubiquitin thioesterase OTU1
Immunogen	The antiserum was produced against synthesized peptide derived from human YOD1. AA range:116-165
Specificity	OTUD2 Polyclonal Antibody detects endogenous levels of OTUD2 protein.
Formulation	Liquid in PBS containing 50% glycerol, 0.5% BSA and 0.02% sodium azide.
Source	Polyclonal, Rabbit,IgG
Purification	The antibody was affinity-purified from rabbit antiserum by affinity-chromatography using epitope-specific immunogen.
Dilution	Western Blot: 1/500 - 1/2000. ELISA: 1/10000. Not yet tested in other applications.
Concentration	1 mg/ml
Purity	≥90%
Storage Stability	-20°C/1 year
Synonyms	YOD1; DUBA8; HIN7; OTUD2; Ubiquitin thioesterase OTU1; DUBA-8; HIV-1-induced protease 7; HIN-7; HsHIN7; OTU domain-containing protein 2
Observed Band	35kD
Cell Pathway	Cytoplasm . Recruited to damaged lysosomes decorated with K48-linked ubiquitin chains. .
Tissue Specificity	Fetal liver,Spinal cord,Testis,
Function	function:Hydrolase that can remove conjugated ubiquitin from proteins and may therefore play an important regulatory role at the level of protein turnover by preventing degradation.,sequence caution:Wrong choice of frame.,similarity:Contains 1 C2H2-type zinc finger.,similarity:Contains 1 OTU domain.,
Background	Protein ubiquitination controls many intracellular processes, including cell cycle progression, transcriptional activation, and signal transduction. This dynamic process, involving ubiquitin conjugating enzymes and deubiquitinating enzymes, adds and removes ubiquitin. Deubiquitinating enzymes are cysteine proteases

Nanjing BYabscience technology Co.,Ltd



that specifically cleave ubiquitin from ubiquitin-conjugated protein substrates. The protein encoded by this gene belongs to a DUB subfamily characterized by an ovarian tumor (OTU) domain. Alternative splicing results in multiple transcript variants. [provided by RefSeq, Jan 2013],

matters needing attention

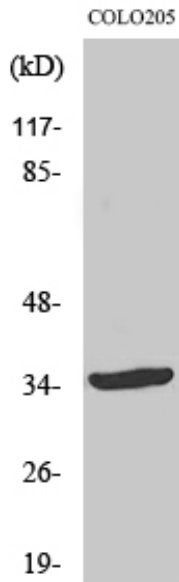
Avoid repeated freezing and thawing!

Usage suggestions

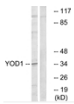
This product can be used in immunological reaction related experiments. For more information, please consult technical personnel.



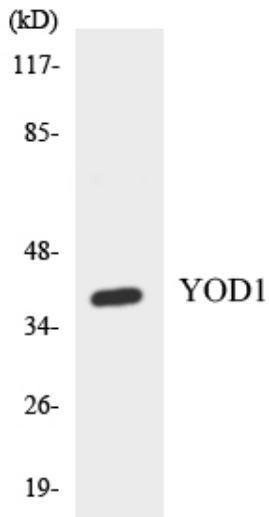
Products Images



Western Blot analysis of various cells using OTUD2 Polyclonal Antibody



Western blot analysis of lysates from COLO cells, using YOD1 Antibody. The lane on the right is blocked with the synthesized peptide.



Western blot analysis of the lysates from HT-29 cells using YOD1 antibody.