



NIM1 Polyclonal Antibody

Catalog No	BYab-14879
Isotype	IgG
Reactivity	Human;Mouse
Applications	WB;ELISA
Gene Name	NIM1
Protein Name	Serine/threonine-protein kinase NIM1
Immunogen	The antiserum was produced against synthesized peptide derived from human NIM1. AA range:347-396
Specificity	NIM1 Polyclonal Antibody detects endogenous levels of NIM1 protein.
Formulation	Liquid in PBS containing 50% glycerol, 0.5% BSA and 0.02% sodium azide.
Source	Polyclonal, Rabbit,IgG
Purification	The antibody was affinity-purified from rabbit antiserum by affinity-chromatography using epitope-specific immunogen.
Dilution	Western Blot: 1/500 - 1/2000. ELISA: 1/10000. Not yet tested in other applications.
Concentration	1 mg/ml
Purity	≥90%
Storage Stability	-20°C/1 year
Synonyms	NIM1; Serine/threonine-protein kinase NIM1
Observed Band	
Cell Pathway	nucleus,cytoplasm,integral component of membrane,
Tissue Specificity	Brain,
Function	catalytic activity:ATP + a protein = ADP + a phosphoprotein.,cofactor:Magnesium.,enzyme regulation:Activated by phosphorylation at Thr-229, probably by autophosphorylation.,similarity:Belongs to the protein kinase superfamily. CAMK Ser/Thr protein kinase family.,similarity:Contains 1 protein kinase domain.,
Background	catalytic activity:ATP + a protein = ADP + a phosphoprotein.,cofactor:Magnesium.,enzyme regulation:Activated by phosphorylation at Thr-229, probably by autophosphorylation.,similarity:Belongs to the protein kinase superfamily. CAMK Ser/Thr protein kinase family.,similarity:Contains 1 protein kinase domain.,

Nanjing BYabscience technology Co.,Ltd



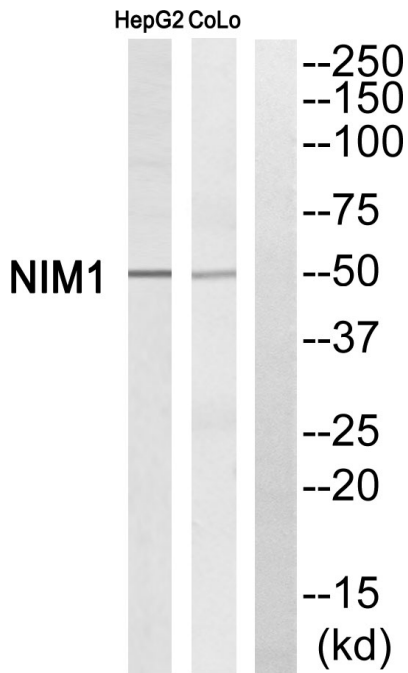
matters needing attention

Avoid repeated freezing and thawing!

Usage suggestions

This product can be used in immunological reaction related experiments. For more information, please consult technical personnel.

Products Images



Western blot analysis of NIM1 Antibody. The lane on the right is blocked with the NIM1 peptide.