



# Nek9 Polyclonal Antibody

<b>Catalog No</b>	BYab-14878
<b>Isotype</b>	IgG
<b>Reactivity</b>	Human;Mouse;Rat
<b>Applications</b>	WB;IF;ELISA
<b>Gene Name</b>	NEK9
<b>Protein Name</b>	Serine/threonine-protein kinase Nek9
<b>Immunogen</b>	The antiserum was produced against synthesized peptide derived from human NEK9. AA range:176-225
<b>Specificity</b>	Nek9 Polyclonal Antibody detects endogenous levels of Nek9 protein.
<b>Formulation</b>	Liquid in PBS containing 50% glycerol, 0.5% BSA and 0.02% sodium azide.
<b>Source</b>	Polyclonal, Rabbit,IgG
<b>Purification</b>	The antibody was affinity-purified from rabbit antiserum by affinity-chromatography using epitope-specific immunogen.
<b>Dilution</b>	Western Blot: 1/500 - 1/2000. Immunofluorescence: 1/200 - 1/1000. ELISA: 1/20000. Not yet tested in other applications.
<b>Concentration</b>	1 mg/ml
<b>Purity</b>	≥90%
<b>Storage Stability</b>	-20°C/1 year
<b>Synonyms</b>	NEK9; KIAA1995; NEK8; NERCC; Serine/threonine-protein kinase Nek9; Nercc1 kinase; Never in mitosis A-related kinase 9; NimA-related protein kinase 9; NimA-related kinase 8; Nek8
<b>Observed Band</b>	107kD
<b>Cell Pathway</b>	Cytoplasm . Nucleus .
<b>Tissue Specificity</b>	Most abundant in heart, liver, kidney and testis. Also expressed in smooth muscle cells and fibroblasts.
<b>Function</b>	catalytic activity:ATP + a protein = ADP + a phosphoprotein.,cofactor:Magnesium.,developmental stage:Expression varied mildly across the cell cycle, with highest expression observed in G1 and stationary-phase cells.,domain:Dimerizes through its coiled-coil domain.,enzyme regulation:Activated during mitosis by intramolecular autophosphorylation. Activity and autophosphorylation is activated by manganese >> magnesium ions. Sensitive to increasing concentration of detergents. It is not cell-cycle regulated but activity is higher in G0-arrested cells.,function:Pleiotropic regulator of mitotic

Nanjing BYabscience technology Co.,Ltd



progression, participating in the control of spindle dynamics and chromosome separation. Phosphorylates different histones, myelin basic protein, beta-casein, and BICD2. Phosphorylates histone H3 on serine and threonine residues and beta-casein on serine residues. Important for G1/S transition and S pha

**Background**

This gene encodes a member of the NimA (never in mitosis A) family of serine/threonine protein kinases. The encoded protein is activated in mitosis and, in turn, activates other family members during mitosis. This protein also mediates cellular processes that are essential for interphase progression. [provided by RefSeq, Jul 2016],

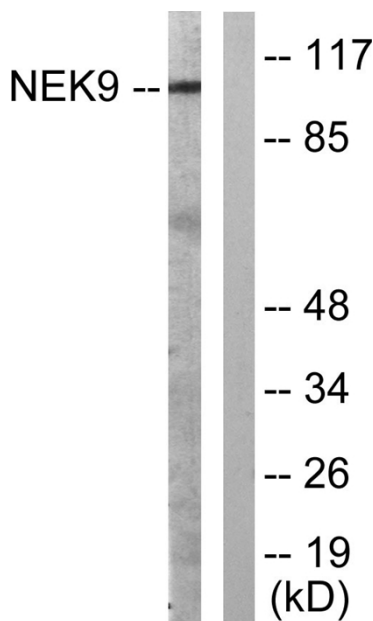
**matters needing attention**

Avoid repeated freezing and thawing!

**Usage suggestions**

This product can be used in immunological reaction related experiments. For more information, please consult technical personnel.

**Products Images**



Western blot analysis of lysates from A549 cells, using NEK9 Antibody. The lane on the right is blocked with the synthesized peptide.