



# Nek4 Polyclonal Antibody

<b>Catalog No</b>	BYab-14875
<b>Isotype</b>	IgG
<b>Reactivity</b>	Human;Mouse;Rat
<b>Applications</b>	IHC;IF;ELISA
<b>Gene Name</b>	NEK4
<b>Protein Name</b>	Serine/threonine-protein kinase Nek4
<b>Immunogen</b>	Synthesized peptide derived from Nek4 . at AA range: 200-280
<b>Specificity</b>	Nek4 Polyclonal Antibody detects endogenous levels of Nek4 protein.
<b>Formulation</b>	Liquid in PBS containing 50% glycerol, 0.5% BSA and 0.02% sodium azide.
<b>Source</b>	Polyclonal, Rabbit,IgG
<b>Purification</b>	The antibody was affinity-purified from rabbit antiserum by affinity-chromatography using epitope-specific immunogen.
<b>Dilution</b>	IHC: 1/100 - 1/300. ELISA: 1/10000.. IF 1:50-200
<b>Concentration</b>	1 mg/ml
<b>Purity</b>	≥90%
<b>Storage Stability</b>	-20°C/1 year
<b>Synonyms</b>	NEK4; STK2; Serine/threonine-protein kinase Nek4; Never in mitosis A-related kinase 4; NimA-related protein kinase 4; Serine/threonine-protein kinase 2; Serine/threonine-protein kinase NRK2
<b>Observed Band</b>	
<b>Cell Pathway</b>	Cell projection, cilium . Cytoplasm .
<b>Tissue Specificity</b>	Highest expression in adult heart, followed by pancreas, skeletal muscle, brain, testis, retina, liver, kidney, lung and placenta. Present in most primary carcinomas.
<b>Function</b>	catalytic activity:ATP + a protein = ADP + a phosphoprotein.,cofactor:Magnesium.,function:Seems to act exclusively upon threonine residues.,similarity:Belongs to the protein kinase superfamily.,similarity:Belongs to the protein kinase superfamily. NEK Ser/Thr protein kinase family. NIMA subfamily.,similarity:Contains 1 protein kinase domain.,tissue specificity:Highest expression in adult heart, followed by pancreas, skeletal muscle, brain, liver, kidney, lung and placenta. Present in most primary carcinomas.,

Nanjing BYabscience technology Co.,Ltd



**Background**

catalytic activity:ATP + a protein = ADP + a phosphoprotein.,cofactor:Magnesium.,function:Seems to act exclusively upon threonine residues.,similarity:Belongs to the protein kinase superfamily.,similarity:Belongs to the protein kinase superfamily. NEK Ser/Thr protein kinase family. NIMA subfamily.,similarity:Contains 1 protein kinase domain.,tissue specificity:Highest expression in adult heart, followed by pancreas, skeletal muscle, brain, liver, kidney, lung and placenta. Present in most primary carcinomas.,

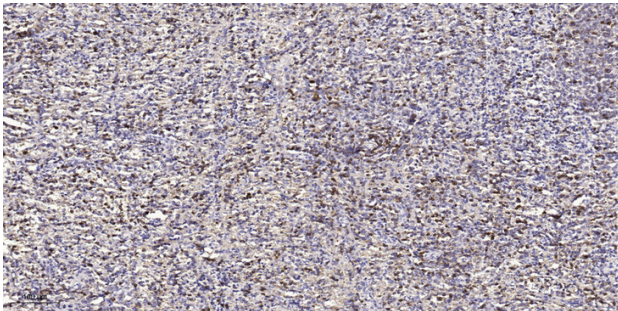
**matters needing attention**

Avoid repeated freezing and thawing!

**Usage suggestions**

This product can be used in immunological reaction related experiments. For more information, please consult technical personnel.

**Products Images**



Immunohistochemical analysis of paraffin-embedded human spleen tissue. 1,primary Antibody was diluted at 1:200(4° overnight). 2, Sodium citrate pH 6.0 was used for antigen retrieval(>98°C,20min). 3,Secondary antibody was diluted at 1:200