



MLK1/2 Polyclonal Antibody

Catalog No	BYab-14854
Isotype	IgG
Reactivity	Human;Mouse
Applications	IHC;IF;ELISA
Gene Name	MAP3K9/MAP3K10
Protein Name	Mitogen-activated protein kinase kinase kinase 9/10
Immunogen	The antiserum was produced against synthesized peptide derived from human MLK1/2. AA range:281-330
Specificity	MLK1/2 Polyclonal Antibody detects endogenous levels of MLK1/2 protein.
Formulation	Liquid in PBS containing 50% glycerol, 0.5% BSA and 0.02% sodium azide.
Source	Polyclonal, Rabbit,IgG
Purification	The antibody was affinity-purified from rabbit antiserum by affinity-chromatography using epitope-specific immunogen.
Dilution	IHC: 1/100 - 1/300. ELISA: 1/5000.. IF 1:50-200
Concentration	1 mg/ml
Purity	≥90%
Storage Stability	-20°C/1 year
Synonyms	MAP3K9; MLK1; PRKE1; Mitogen-activated protein kinase kinase kinase 9; Mixed lineage kinase 1; MAP3K10; MLK2; MST; Mitogen-activated protein kinase kinase kinase 10; Mixed lineage kinase 2; Protein kinase MST
Observed Band	
Cell Pathway	intracellular,integral component of membrane,
Tissue Specificity	Expressed in epithelial tumor cell lines of colonic, breast and esophageal origin.
Function	catalytic activity:ATP + a protein = ADP + a phosphoprotein.,cofactor:Magnesium.,enzyme regulation:Homodimerization via the leucine zipper domains is required for autophosphorylation and subsequent activation.,function:Activates the JUN N-terminal pathway.,PTM:Autophosphorylation on serine and threonine residues within the activation loop plays a role in enzyme activation. Thr-312 is likely to be the main autophosphorylation site.,similarity:Belongs to the protein kinase superfamily. STE Ser/Thr protein kinase family. MAP kinase kinase kinase subfamily.,similarity:Contains 1 protein kinase domain.,similarity:Contains 1 SH3

Nanjing BYabscience technology Co.,Ltd



domain.,subunit:Homodimer.,tissue specificity:Expressed in epithelial tumor cell lines of colonic, breast and esophageal origin.,

Background

catalytic activity:ATP + a protein = ADP + a phosphoprotein.,cofactor:Magnesium.,enzyme regulation:Homodimerization via the leucine zipper domains is required for autophosphorylation and subsequent activation.,function:Activates the JUN N-terminal pathway.,PTM:Autophosphorylation on serine and threonine residues within the activation loop plays a role in enzyme activation. Thr-312 is likely to be the main autophosphorylation site.,similarity:Belongs to the protein kinase superfamily. STE Ser/Thr protein kinase family. MAP kinase kinase kinase subfamily.,similarity:Contains 1 protein kinase domain.,similarity:Contains 1 SH3 domain.,subunit:Homodimer.,tissue specificity:Expressed in epithelial tumor cell lines of colonic, breast and esophageal origin.,

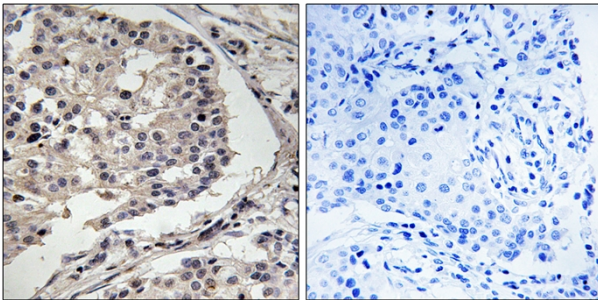
matters needing attention

Avoid repeated freezing and thawing!

Usage suggestions

This product can be used in immunological reaction related experiments. For more information, please consult technical personnel.

Products Images



Immunohistochemistry analysis of paraffin-embedded human breast carcinoma tissue, using MLK1/2 Antibody. The picture on the right is blocked with the synthesized peptide.

Nanjing BYabscience technology Co.,Ltd