



# MLK1 Polyclonal Antibody

<b>Catalog No</b>	BYab-14853
<b>Isotype</b>	IgG
<b>Reactivity</b>	Human;Mouse
<b>Applications</b>	IHC;IF;ELISA
<b>Gene Name</b>	MAP3K9
<b>Protein Name</b>	Mitogen-activated protein kinase kinase kinase 9
<b>Immunogen</b>	The antiserum was produced against synthesized peptide derived from human MAP3K9. AA range:561-610
<b>Specificity</b>	MLK1 Polyclonal Antibody detects endogenous levels of MLK1 protein.
<b>Formulation</b>	Liquid in PBS containing 50% glycerol, 0.5% BSA and 0.02% sodium azide.
<b>Source</b>	Polyclonal, Rabbit,IgG
<b>Purification</b>	The antibody was affinity-purified from rabbit antiserum by affinity-chromatography using epitope-specific immunogen.
<b>Dilution</b>	IHC: 1/100 - 1/300. ELISA: 1/20000.. IF 1:50-200
<b>Concentration</b>	1 mg/ml
<b>Purity</b>	≥90%
<b>Storage Stability</b>	-20°C/1 year
<b>Synonyms</b>	MAP3K9; MLK1; PRKE1; Mitogen-activated protein kinase kinase kinase 9; Mixed lineage kinase 1
<b>Observed Band</b>	
<b>Cell Pathway</b>	intracellular,integral component of membrane,
<b>Tissue Specificity</b>	Expressed in epithelial tumor cell lines of colonic, breast and esophageal origin.
<b>Function</b>	catalytic activity:ATP + a protein = ADP + a phosphoprotein.,cofactor:Magnesium.,enzyme regulation:Homodimerization via the leucine zipper domains is required for autophosphorylation and subsequent activation.,function:Activates the JUN N-terminal pathway.,PTM:Autophosphorylation on serine and threonine residues within the activation loop plays a role in enzyme activation. Thr-312 is likely to be the main autophosphorylation site.,similarity:Belongs to the protein kinase superfamily. STE Ser/Thr protein kinase family. MAP kinase kinase kinase subfamily.,similarity:Contains 1 protein kinase domain.,similarity:Contains 1 SH3 domain.,subunit:Homodimer.,tissue specificity:Expressed in epithelial tumor cell

Nanjing BYabscience technology Co.,Ltd



lines of colonic, breast and esophageal origin.,

**Background**

MAP3K9 (Mitogen-Activated Protein Kinase Kinase Kinase 9) is a Protein Coding gene. Diseases associated with MAP3K9 include retroperitoneal neuroblastoma. Among its related pathways are MAP Kinase Signaling and TGF-Beta Pathway. GO annotations related to this gene include protein homodimerization activity and protein kinase activity. An important paralog of this gene is KSR1.

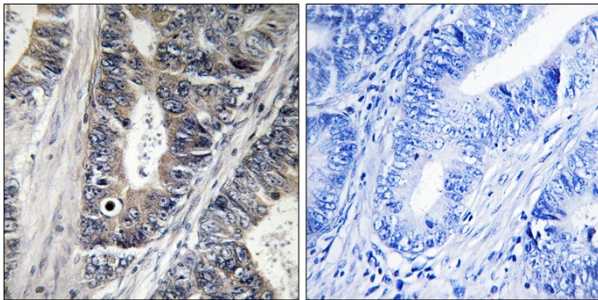
**matters needing attention**

Avoid repeated freezing and thawing!

**Usage suggestions**

This product can be used in immunological reaction related experiments. For more information, please consult technical personnel.

**Products Images**



Immunohistochemistry analysis of paraffin-embedded human colon carcinoma tissue, using MAP3K9 Antibody. The picture on the right is blocked with the synthesized peptide.