



MINK1 Polyclonal Antibody

Catalog No	BYab-14845
Isotype	IgG
Reactivity	Human;Mouse
Applications	WB;IHC;IF;ELISA
Gene Name	MINK1
Protein Name	Misshapen-like kinase 1
Immunogen	The antiserum was produced against synthesized peptide derived from human MAP4K6. AA range:401-450
Specificity	MINK1 Polyclonal Antibody detects endogenous levels of MINK1 protein.
Formulation	Liquid in PBS containing 50% glycerol, 0.5% BSA and 0.02% sodium azide.
Source	Polyclonal, Rabbit,IgG
Purification	The antibody was affinity-purified from rabbit antiserum by affinity-chromatography using epitope-specific immunogen.
Dilution	WB: 1/500 - 1/2000. IHC: 1/100 - 1/300. ELISA: 1/20000.. IF 1:50-200
Concentration	1 mg/ml
Purity	≥90%
Storage Stability	-20°C/1 year
Synonyms	MINK1; B55; MAP4K6; MINK; YSK2; ZC3; Misshapen-like kinase 1; GCK family kinase MiNK; MAPK/ERK kinase kinase kinase 6; MEK kinase kinase 6; MEKKK 6; Misshapen/NIK-related kinase; Mitogen-activated protein kinase kinase kinase kinase 6
Observed Band	150kD
Cell Pathway	Cytoplasm . Cell junction, synapse, postsynaptic density . Cell projection, axon . Cell projection, dendrite .; [Isoform 4]: Golgi apparatus.
Tissue Specificity	Expressed in the brain, isoform 2 is more abundant than isoform 1. Isoform 3 is ubiquitously expressed. Isoform 1 is most abundant in the skeletal muscle. Isoform 4 is ubiquitously expressed with relative high levels in brain, skeletal muscle, pancreas and testis.
Function	catalytic activity:ATP + a protein = ADP + a phosphoprotein.,cofactor:Magnesium.,function:Serine/threonine kinase that may play a role in the response to environmental stress. Appears to act upstream of the JUN N-terminal pathway. May play a role in the development of the brain.,similarity:Belongs to the protein kinase superfamily.,similarity:Belongs to

Nanjing BYabscience technology Co.,Ltd



the protein kinase superfamily. STE Ser/Thr protein kinase family. STE20 subfamily.,similarity:Contains 1 CNH domain.,similarity:Contains 1 protein kinase domain.,tissue specificity:Expressed in the brain, isoform 2 is more abundant than isoform 1.,

Background

This gene encodes a serine/threonine kinase belonging to the germinal center kinase (GCK) family. The protein is structurally similar to the kinases that are related to NIK and may belong to a distinct subfamily of NIK-related kinases within the GCK family. Studies of the mouse homolog indicate an up-regulation of expression in the course of postnatal mouse cerebral development and activation of the cJun N-terminal kinase (JNK) and the p38 pathways. [provided by RefSeq, Mar 2016],

matters needing attention

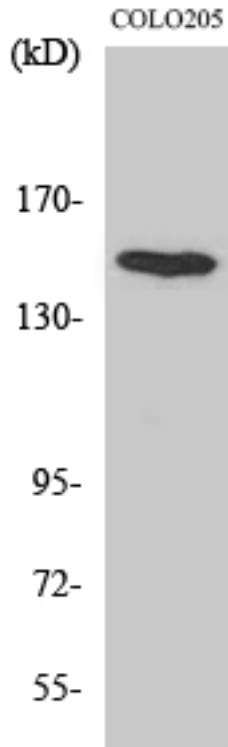
Avoid repeated freezing and thawing!

Usage suggestions

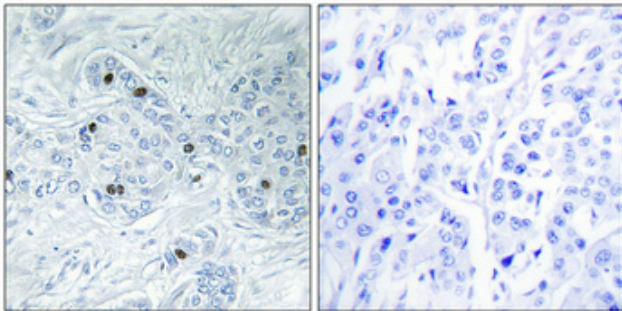
This product can be used in immunological reaction related experiments. For more information, please consult technical personnel.



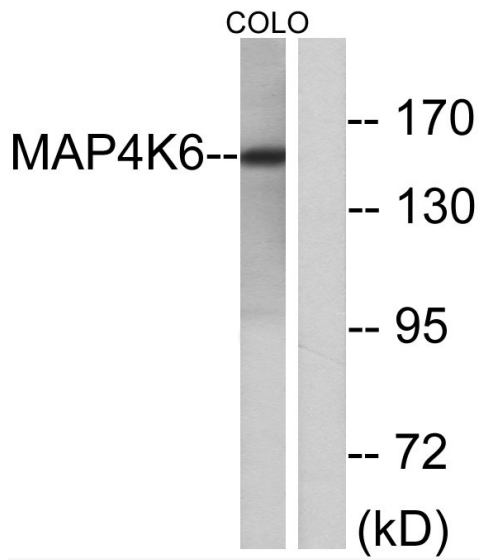
Products Images



Western Blot analysis of various cells using MINK1 Polyclonal Antibody diluted at 1:1000



Immunohistochemical analysis of paraffin-embedded Human breast cancer. Antibody was diluted at 1:100(4° overnight). High-pressure and temperature Tris-EDTA, pH8.0 was used for antigen retrieval. Negative control (right) obtained from antibody was pre-absorbed by immunogen peptide.



Western blot analysis of lysates from COLO cells, using MAP4K6 Antibody. The lane on the right is blocked with the synthesized peptide.