



# MEK-4 Polyclonal Antibody

<b>Catalog No</b>	BYab-14839
<b>Isotype</b>	IgG
<b>Reactivity</b>	Human;Mouse;Rat
<b>Applications</b>	WB;ELISA;IHC
<b>Gene Name</b>	MAP2K4
<b>Protein Name</b>	Dual specificity mitogen-activated protein kinase kinase 4
<b>Immunogen</b>	The antiserum was produced against synthesized peptide derived from human SEK1/MKK4. AA range:46-95
<b>Specificity</b>	MEK-4 Polyclonal Antibody detects endogenous levels of MEK-4 protein.
<b>Formulation</b>	Liquid in PBS containing 50% glycerol, 0.5% BSA and 0.02% sodium azide.
<b>Source</b>	Polyclonal, Rabbit,IgG
<b>Purification</b>	The antibody was affinity-purified from rabbit antiserum by affinity-chromatography using epitope-specific immunogen.
<b>Dilution</b>	WB 1:500-2000;IHC-p 1:50-300; ELISA 2000-20000
<b>Concentration</b>	1 mg/ml
<b>Purity</b>	≥90%
<b>Storage Stability</b>	-20°C/1 year
<b>Synonyms</b>	MAP2K4; JNKK1; MEK4; MKK4; PRKMK4; SEK1; SERK1; SKK1; Dual specificity mitogen-activated protein kinase kinase 4; MAP kinase kinase 4; MAPKK 4; JNK-activating kinase 1; MAPK/ERK kinase 4; MEK 4; SAPK/ERK kinase 1; SEK1; Stress-activated pro
<b>Observed Band</b>	44kD
<b>Cell Pathway</b>	Cytoplasm . Nucleus .
<b>Tissue Specificity</b>	Abundant expression is seen in the skeletal muscle. It is also widely expressed in other tissues.
<b>Function</b>	catalytic activity:ATP + a protein = ADP + a phosphoprotein.,function:Dual specificity kinase that activates the JUN kinases MAPK8 (JNK1) and MAPK9 (JNK2) as well as MAPK14 (p38) but not MAPK1 (ERK2) or MAPK3 (ERK1).,PTM:Activated by phosphorylation on Ser/Thr by MAP kinase kinase kinases.,similarity:Belongs to the protein kinase superfamily.,similarity:Belongs to the protein kinase superfamily. STE Ser/Thr protein kinase family. MAP kinase kinase subfamily.,similarity:Contains 1 protein kinase domain.,subunit:Interacts

Nanjing BYabscience technology Co.,Ltd



with SPAG9.,tissue specificity:Abundant expression is seen in the skeletal muscle. It is also widely expressed in other tissues.,

#### Background

This gene encodes a member of the mitogen-activated protein kinase (MAPK) family. Members of this family act as an integration point for multiple biochemical signals and are involved in a wide variety of cellular processes such as proliferation, differentiation, transcription regulation, and development. They form a three-tiered signaling module composed of MAPKKKs, MAPKKs, and MAPKs. This protein is phosphorylated at serine and threonine residues by MAPKKKs and subsequently phosphorylates downstream MAPK targets at threonine and tyrosine residues. A similar protein in mouse has been reported to play a role in liver organogenesis. A pseudogene of this gene is located on the long arm of chromosome X. Alternative splicing results in multiple transcript variants. [provided by RefSeq, Jul 2013],

#### matters needing attention

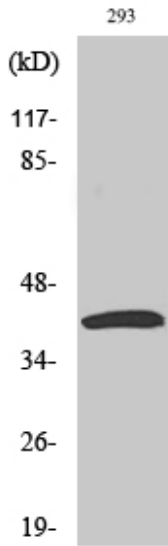
Avoid repeated freezing and thawing!

#### Usage suggestions

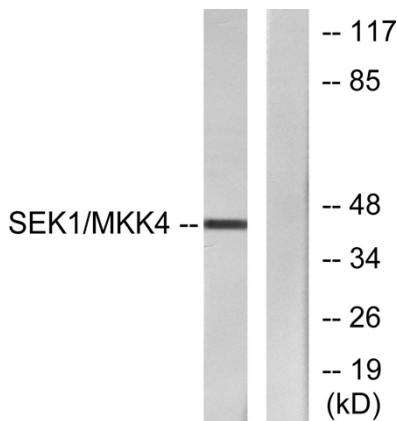
This product can be used in immunological reaction related experiments. For more information, please consult technical personnel.



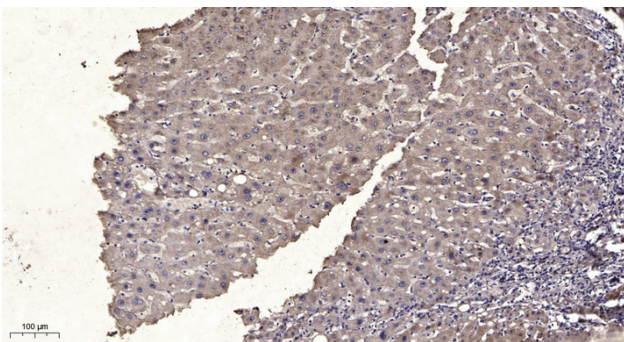
## Products Images



Western Blot analysis of various cells using MEK-4 Polyclonal Antibody diluted at 1:1000



Western blot analysis of lysates from NIH/3T3 cells, using SEK1/MKK4 Antibody. The lane on the right is blocked with the synthesized peptide.



Immunohistochemical analysis of paraffin-embedded human liver cancer. 1, Antibody was diluted at 1:200(4° overnight). 2, Tris-EDTA, pH9.0 was used for antigen retrieval. 3, Secondary antibody was diluted at 1:200(room temperature, 45min).