



MAST3 Polyclonal Antibody

Catalog No	BYab-14828
Isotype	IgG
Reactivity	Human;Mouse
Applications	WB;ELISA
Gene Name	MAST3
Protein Name	Microtubule-associated serine/threonine-protein kinase 3
Immunogen	The antiserum was produced against synthesized peptide derived from human MAST3. AA range:1031-1080
Specificity	MAST3 Polyclonal Antibody detects endogenous levels of MAST3 protein.
Formulation	Liquid in PBS containing 50% glycerol, 0.5% BSA and 0.02% sodium azide.
Source	Polyclonal, Rabbit,IgG
Purification	The antibody was affinity-purified from rabbit antiserum by affinity-chromatography using epitope-specific immunogen.
Dilution	Western Blot: 1/500 - 1/2000. ELISA: 1/10000. Not yet tested in other applications.
Concentration	1 mg/ml
Purity	≥90%
Storage Stability	-20°C/1 year
Synonyms	MAST3; KIAA0561; Microtubule-associated serine/threonine-protein kinase 3
Observed Band	143kD
Cell Pathway	intracellular,
Tissue Specificity	Brain,
Function	catalytic activity:ATP + a protein = ADP + a phosphoprotein.,caution:It is uncertain whether Met-1, Met-171 or Met-172 is the initiator.,cofactor:Magnesium.,similarity:Belongs to the protein kinase superfamily. AGC Ser/Thr protein kinase family.,similarity:Contains 1 AGC-kinase C-terminal domain.,similarity:Contains 1 PDZ (DHR) domain.,similarity:Contains 1 protein kinase domain.,subunit:Interacts with PTEN.,
Background	catalytic activity:ATP + a protein = ADP + a phosphoprotein.,caution:It is uncertain whether Met-1, Met-171 or Met-172 is the initiator.,cofactor:Magnesium.,similarity:Belongs to the protein kinase superfamily. AGC Ser/Thr protein kinase family.,similarity:Contains 1 AGC-kinase C-terminal

Nanjing BYabscience technology Co.,Ltd



domain.,similarity:Contains 1 PDZ (DHR) domain.,similarity:Contains 1 protein kinase domain.,subunit:Interacts with PTEN.,

matters needing attention

Avoid repeated freezing and thawing!

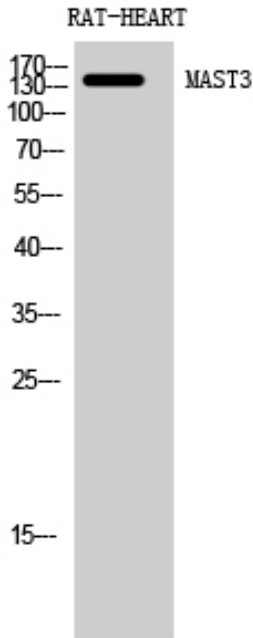
Usage suggestions

This product can be used in immunological reaction related experiments. For more information, please consult technical personnel.

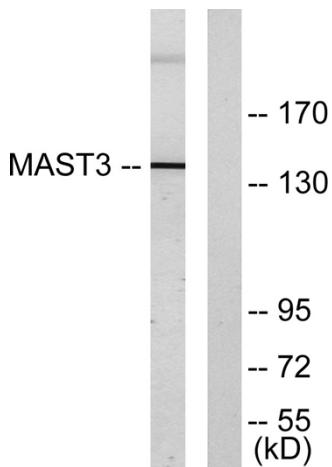


Products Images

Western Blot analysis of RAT-HEART cells using MAST3 Polyclonal Antibody diluted at 1:500



Western blot analysis of lysates from Jurkat cells, using MAST3 Antibody. The lane on the right is blocked with the synthesized peptide.



Nanjing BYabscience technology Co.,Ltd