



JNK3 Polyclonal Antibody

Catalog No	BYab-14806
Isotype	IgG
Reactivity	Human;Mouse;Rat
Applications	WB;IHC;IF;ELISA
Gene Name	MAPK10
Protein Name	Mitogen-activated protein kinase 10
Immunogen	The antiserum was produced against synthesized peptide derived from human MAPK10. AA range:361-410
Specificity	JNK3 Polyclonal Antibody detects endogenous levels of JNK3 protein.
Formulation	Liquid in PBS containing 50% glycerol, 0.5% BSA and 0.02% sodium azide.
Source	Polyclonal, Rabbit,IgG
Purification	The antibody was affinity-purified from rabbit antiserum by affinity-chromatography using epitope-specific immunogen.
Dilution	Western Blot: 1/500 - 1/2000. Immunohistochemistry: 1/100 - 1/300. Immunofluorescence: 1/200 - 1/1000. ELISA: 1/20000. Not yet tested in other applications.
Concentration	1 mg/ml
Purity	≥90%
Storage Stability	-20°C/1 year
Synonyms	MAPK10; JNK3; JNK3A; PRKM10; SAPK1B; Mitogen-activated protein kinase 10; MAP kinase 10; MAPK 10; MAP kinase p49 3F12; Stress-activated protein kinase 1b; SAPK1b; Stress-activated protein kinase JNK3; c-Jun N-terminal kinase 3
Observed Band	48kD
Cell Pathway	Cytoplasm . Membrane ; Lipid-anchor . Nucleus . Mitochondrion . Palmitoylation regulates MAPK10 trafficking to cytoskeleton. Recruited to the mitochondria in the presence of SARM1 (By similarity). .
Tissue Specificity	Specific to a subset of neurons in the nervous system. Present in the hippocampus and areas, cerebellum, striatum, brain stem, and weakly in the spinal cord. Very weak expression in testis and kidney.
Function	alternative products:A similar low level of binding to substrates is observed for isoform alpha-1 and isoform alpha-2. However, there is no correlation between binding and phosphorylation, which is achieved about at the same efficiency by all isoforms,catalytic activity:ATP + a protein = ADP + a phosphoprotein.,caution:The

Nanjing BYabscience technology Co.,Ltd



sequence shown here is derived from an Ensembl automatic analysis pipeline and should be considered as preliminary data. cofactor: Magnesium. disease: A chromosomal rearrangement involving MAPK10 is a cause of epileptic encephalopathy Lennox-Gastaut type [MIM:606369]. Translocation t(Y;4)(q11.2;q21) which causes MAPK10 truncation. Epileptic encephalopathies of the Lennox-Gastaut group are childhood epileptic disorders characterized by severe psychomotor delay and seizures. domain: The TXY motif contains the threonine and tyrosine residues whose phosphorylation activates t

Background

The protein encoded by this gene is a member of the MAP kinase family. MAP kinases act as integration points for multiple biochemical signals and are involved in a wide variety of cellular processes, such as proliferation, differentiation, transcription regulation and development. This kinase is specifically expressed in a subset of neurons in the nervous system and is activated by threonine and tyrosine phosphorylation. Targeted deletion of this gene in mice suggests that it may have a role in stress-induced neuronal apoptosis. Alternatively spliced transcript variants encoding different isoforms have been described for this gene. A recent study provided evidence for translational readthrough in this gene and expression of an additional C-terminally extended isoform via the use of an alternative in-frame translation termination codon. [provided by RefSeq, Dec 2015],

matters needing attention

Avoid repeated freezing and thawing!

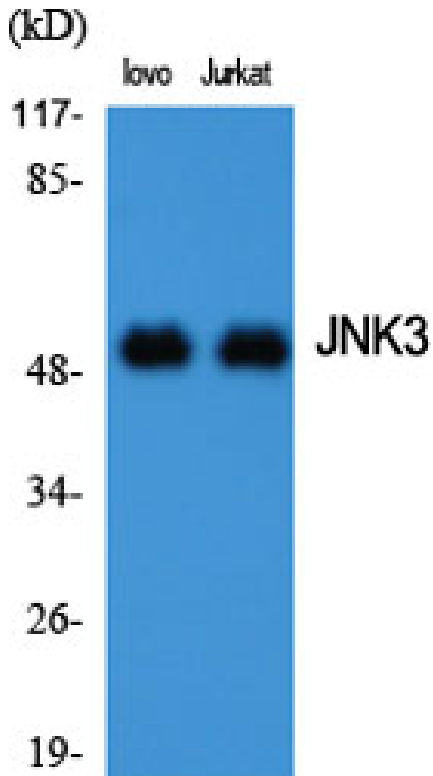
Usage suggestions

This product can be used in immunological reaction related experiments. For more information, please consult technical personnel.

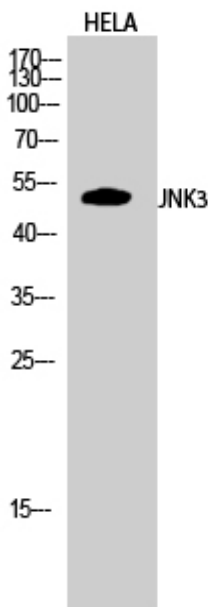
Nanjing BYabscience technology Co.,Ltd



Products Images

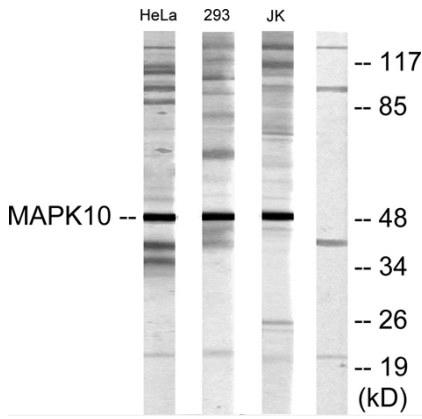


Western Blot analysis of various cells using JNK3
Polyclonal Antibody diluted at 1:2000

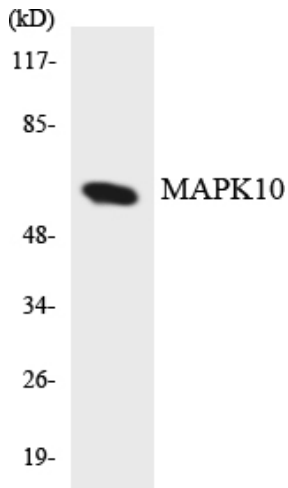


Western Blot analysis of HELA cells using JNK3
Polyclonal Antibody diluted at 1:2000

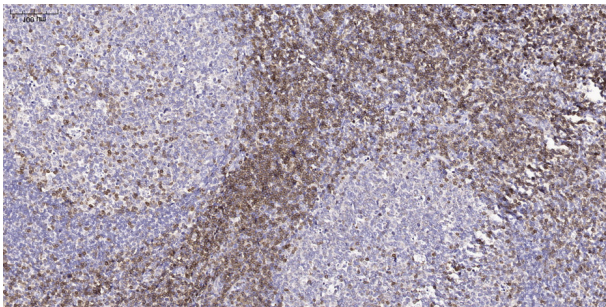
Nanjing BYabscience technology Co.,Ltd



Western blot analysis of lysates from HeLa, 293, and Jurkat cells, using MAPK10 Antibody. The lane on the right is blocked with the synthesized peptide.



Western blot analysis of the lysates from HUVEC cells using MAPK10 antibody.



Immunohistochemical analysis of paraffin-embedded human tonsil. 1, Tris-EDTA, pH 9.0 was used for antigen retrieval. 2 Antibody was diluted at 1:200 (4° overnight). 3, Secondary antibody was diluted at 1:200 (room temperature, 45 min).