



JIK Polyclonal Antibody

Catalog No	BYab-14803
Isotype	IgG
Reactivity	Human;Mouse;Rat
Applications	WB;ELISA;IHC
Gene Name	TAOK3
Protein Name	Serine/threonine-protein kinase TAO3
Immunogen	The antiserum was produced against synthesized peptide derived from human TAOK3. AA range:531-580
Specificity	JIK Polyclonal Antibody detects endogenous levels of JIK protein.
Formulation	Liquid in PBS containing 50% glycerol, 0.5% BSA and 0.02% sodium azide.
Source	Polyclonal, Rabbit,IgG
Purification	The antibody was affinity-purified from rabbit antiserum by affinity-chromatography using epitope-specific immunogen.
Dilution	WB 1:500-2000;IHC-p 1:50-300; ELISA 2000-20000
Concentration	1 mg/ml
Purity	≥90%
Storage Stability	-20°C/1 year
Synonyms	TAOK3; DPK; JIK; KDS; MAP3K18; Serine/threonine-protein kinase TAO3; Cutaneous T-cell lymphoma-associated antigen HD-CL-09; CTCL-associated antigen HD-CL-09; Dendritic cell-derived protein kinase; JNK/SAPK-inhibitory kinase; Jun kinase-inhi
Observed Band	110kD
Cell Pathway	Cytoplasm . Cell membrane ; Peripheral membrane protein . Also localized to the peripheral cell membrane.
Tissue Specificity	Ubiquitously expressed at a low level, and highly expressed in peripheral blood leukocytes (PBLs), thymus, spleen, kidney, skeletal muscle, heart and liver.
Function	catalytic activity:ATP + a protein = ADP + a phosphoprotein.,function:Inhibits the basal activity of Jun kinase. Negatively regulated by epidermal growth factor (EGF). When overexpressed, may activate ERK1/ERK2 and JNK/SAPK.,PTM:Autophosphorylated. Phosphorylated upon DNA damage, probably by ATM or ATR.,similarity:Belongs to the protein kinase superfamily. STE Ser/Thr protein kinase family. STE20 subfamily.,similarity:Contains 1 protein kinase domain.,subcellular location:Also localized to the peripheral cell

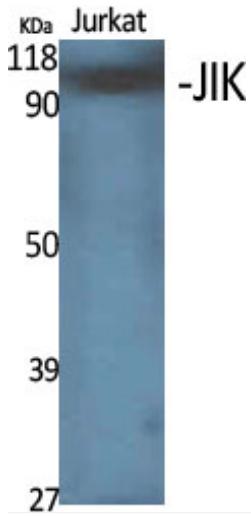
Nanjing BYabscience technology Co.,Ltd



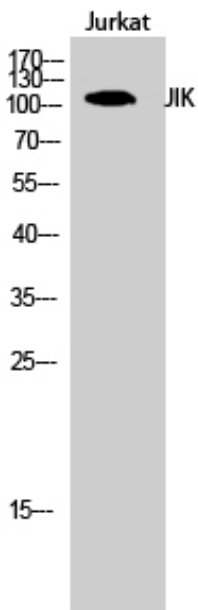
	membrane.,subunit:Self-associates.,tissue specificity:Ubiquitously expressed at a low level, and highly expressed in peripheral blood leukocytes (PBLs), thymus, spleen, kidney, skeletal muscle, heart and liver.,
Background	catalytic activity:ATP + a protein = ADP + a phosphoprotein.,function:Inhibits the basal activity of Jun kinase. Negatively regulated by epidermal growth factor (EGF). When overexpressed, may activate ERK1/ERK2 and JNK/SAPK.,PTM:Autophosphorylated. Phosphorylated upon DNA damage, probably by ATM or ATR.,similarity:Belongs to the protein kinase superfamily. STE Ser/Thr protein kinase family. STE20 subfamily.,similarity:Contains 1 protein kinase domain.,subcellular location:Also localized to the peripheral cell membrane.,subunit:Self-associates.,tissue specificity:Ubiquitously expressed at a low level, and highly expressed in peripheral blood leukocytes (PBLs), thymus, spleen, kidney, skeletal muscle, heart and liver.,
matters needing attention	Avoid repeated freezing and thawing!
Usage suggestions	This product can be used in immunological reaction related experiments. For more information, please consult technical personnel.



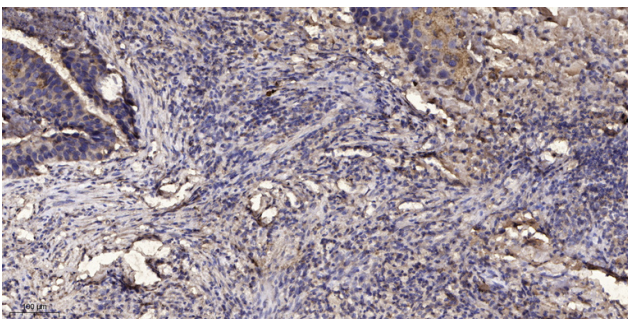
Products Images



Western Blot analysis of various cells using JIK Polyclonal Antibody



Western Blot analysis of Jurkat cells using JIK Polyclonal Antibody



Immunohistochemical analysis of paraffin-embedded human Squamous cell carcinoma of lung. 1, Antibody was diluted at 1:200(4° overnight). 2, Tris-EDTA,pH9.0 was used for antigen retrieval. 3,Secondary antibody was diluted at 1:200(room temperature, 45min).