



Jamip2 Polyclonal Antibody

Catalog No	BYab-14802
Isotype	IgG
Reactivity	Human;Rat;Mouse;
Applications	WB;IHC;IF;ELISA
Gene Name	JAKMIP2
Protein Name	Janus kinase and microtubule-interacting protein 2
Immunogen	The antiserum was produced against synthesized peptide derived from human JAKMIP2. AA range:761-810
Specificity	Jamip2 Polyclonal Antibody detects endogenous levels of Jamip2 protein.
Formulation	Liquid in PBS containing 50% glycerol, 0.5% BSA and 0.02% sodium azide.
Source	Polyclonal, Rabbit,IgG
Purification	The antibody was affinity-purified from rabbit antiserum by affinity-chromatography using epitope-specific immunogen.
Dilution	Western Blot: 1/500 - 1/2000. Immunohistochemistry: 1/100 - 1/300. Immunofluorescence: 1/200 - 1/1000. ELISA: 1/10000. Not yet tested in other applications.
Concentration	1 mg/ml
Purity	≥90%
Storage Stability	-20°C/1 year
Synonyms	JAKMIP2; JAMIP2; KIAA0555; NECC1; Janus kinase and microtubule-interacting protein 2; CTCL tumor antigen HD-CL-04; Neuroendocrine long coiled-coil protein 1
Observed Band	95kD
Cell Pathway	Golgi apparatus .
Tissue Specificity	Highly expressed in brain, moderately expressed in thymus, spleen and lung, and weakly expressed in kidney, liver and peripheral blood lymphocytes. Also expressed in adrenal and pituitary glands, as well as testis.
Function	similarity:Belongs to the JAKMIP family.,tissue specificity:Highly expressed in brain, moderately expressed in thymus, spleen and lung, and weakly expressed in kidney, liver and peripheral blood lymphocytes. Also expressed in adrenal and pituitary glands, as well as testis.,
Background	The protein encoded by this gene is reported to be a component of the Golgi matrix. It may act as a golgin protein by negatively regulating transit of secretory

Nanjing BYabscience technology Co.,Ltd



cargo and by acting as a structural scaffold of the Golgi. Alternative splicing results in multiple transcript variants. [provided by RefSeq, Aug 2012],

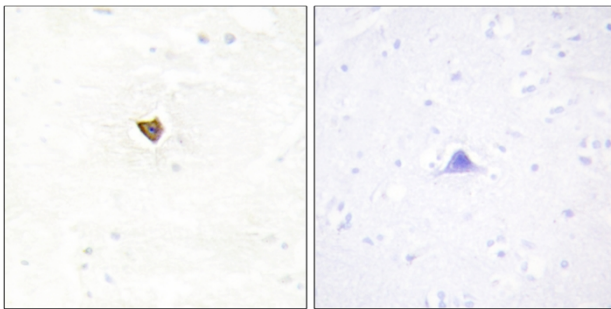
matters needing attention

Avoid repeated freezing and thawing!

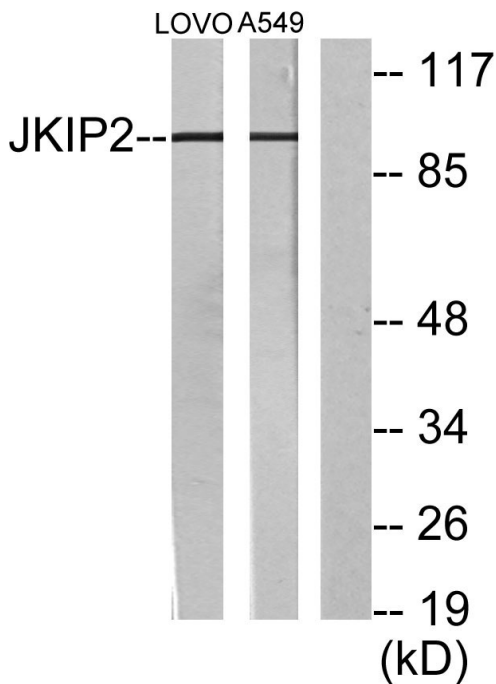
Usage suggestions

This product can be used in immunological reaction related experiments. For more information, please consult technical personnel.

Products Images



Immunohistochemistry analysis of paraffin-embedded human brain tissue, using JAKMIP2 Antibody. The picture on the right is blocked with the synthesized peptide.



Western blot analysis of lysates from LOVO and A549 cells, using JAKMIP2 Antibody. The lane on the right is blocked with the synthesized peptide.