



IP3KA Polyclonal Antibody

Catalog No	BYab-14792
Isotype	IgG
Reactivity	Human;Mouse;Rat
Applications	WB;ELISA;IHC
Gene Name	ITPKA
Protein Name	Inositol-trisphosphate 3-kinase A
Immunogen	The antiserum was produced against synthesized peptide derived from human IP3KA. AA range:396-445
Specificity	IP3KA Polyclonal Antibody detects endogenous levels of IP3KA protein.
Formulation	Liquid in PBS containing 50% glycerol, 0.5% BSA and 0.02% sodium azide.
Source	Polyclonal, Rabbit,IgG
Purification	The antibody was affinity-purified from rabbit antiserum by affinity-chromatography using epitope-specific immunogen.
Dilution	WB 1:500-2000;IHC-p 1:50-300; ELISA 2000-20000
Concentration	1 mg/ml
Purity	≥90%
Storage Stability	-20°C/1 year
Synonyms	ITPKA; Inositol-trisphosphate 3-kinase A; Inositol 1; 4,5-trisphosphate 3-kinase A; IP3 3-kinase A; IP3K A; InsP 3-kinase A
Observed Band	52kD
Cell Pathway	Cytoplasm, cytoskeleton .
Tissue Specificity	Expressed in brain.
Function	catalytic activity:ATP + 1D-myo-inositol 1,4,5-trisphosphate = ADP + 1D-myo-inositol 1,3,4,5-tetrakisphosphate.,enzyme regulation:IP3K is activated by calmodulin.,similarity:Belongs to the inositol phosphokinase (IPK) family.,
Background	Regulates inositol phosphate metabolism by phosphorylation of second messenger inositol 1,4,5-trisphosphate to Ins(1,3,4,5)P4. The activity of the inositol 1,4,5-trisphosphate 3-kinase is responsible for regulating the levels of a large number of inositol polyphosphates that are important in cellular signaling. Both calcium/calmodulin and protein phosphorylation mechanisms control its activity. It is also a substrate for the cyclic AMP-dependent protein kinase, calcium/calmodulin- dependent protein kinase II, and protein kinase C in

Nanjing BYabscience technology Co.,Ltd



vitro.[provided by RefSeq, Apr 2011],

matters needing attention

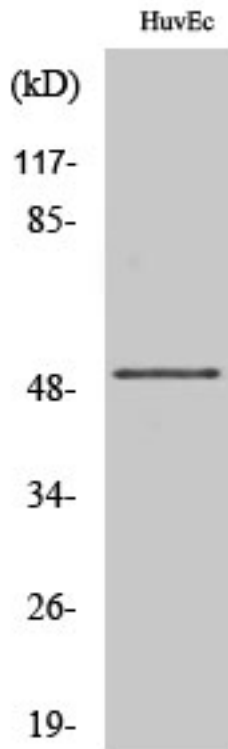
Avoid repeated freezing and thawing!

Usage suggestions

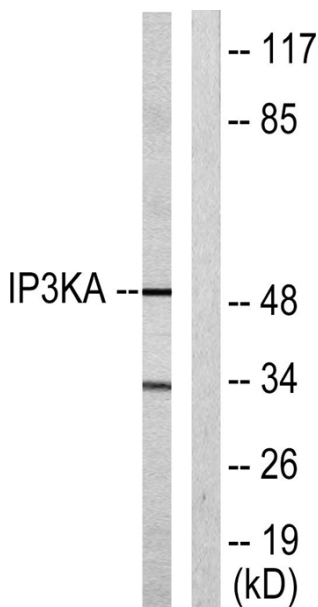
This product can be used in immunological reaction related experiments. For more information, please consult technical personnel.



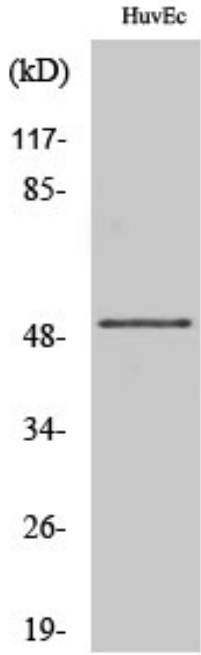
Products Images



Western Blot analysis of various cells using IP3KA Polyclonal Antibody



Western blot analysis of lysates from HUVEC cells, using IP3KA Antibody. The lane on the right is blocked with the synthesized peptide.



Immunohistochemical analysis of paraffin-embedded human Gastric adenocarcinoma. 1, Antibody was diluted at 1:200(4° overnight). 2, Tris-EDTA,pH9.0 was used for antigen retrieval. 3,Secondary antibody was diluted at 1:200(room temperature, 45min).