



HGK Polyclonal Antibody

Catalog No	BYab-14773
Isotype	IgG
Reactivity	Human;Mouse
Applications	WB;IF;ELISA
Gene Name	MAP4K4
Protein Name	Mitogen-activated protein kinase kinase kinase kinase 4
Immunogen	The antiserum was produced against synthesized peptide derived from human MEKKK 4. AA range:406-455
Specificity	HGK Polyclonal Antibody detects endogenous levels of HGK protein.
Formulation	Liquid in PBS containing 50% glycerol, 0.5% BSA and 0.02% sodium azide.
Source	Polyclonal, Rabbit,IgG
Purification	The antibody was affinity-purified from rabbit antiserum by affinity-chromatography using epitope-specific immunogen.
Dilution	Western Blot: 1/500 - 1/2000. Immunofluorescence: 1/200 - 1/1000. ELISA: 1/40000. Not yet tested in other applications.
Concentration	1 mg/ml
Purity	≥90%
Storage Stability	-20°C/1 year
Synonyms	MAP4K4; HGK; KIAA0687; NIK; Mitogen-activated protein kinase kinase kinase kinase 4; HPK/GCK-like kinase HGK; MAPK/ERK kinase kinase kinase 4; MEK kinase kinase 4; MEKKK 4; Nck-interacting kinase
Observed Band	142kD
Cell Pathway	Cytoplasm .
Tissue Specificity	Widely expressed. Isoform 5 is abundant in the brain. Isoform 4 is predominant in the liver, skeletal muscle and placenta.
Function	catalytic activity:ATP + a protein = ADP + a phosphoprotein.,cofactor:Magnesium.,function:Serine/threonine kinase that may play a role in the response to environmental stress and cytokines such as TNF-alpha. Appears to act upstream of the JUN N-terminal pathway.,PTM:Phosphorylated upon DNA damage, probably by ATM or ATR.,similarity:Belongs to the protein kinase superfamily.,similarity:Belongs to the protein kinase superfamily. STE Ser/Thr protein kinase family. STE20 subfamily.,similarity:Contains 1 CNH domain.,similarity:Contains 1 protein kinase

Nanjing BYabscience technology Co.,Ltd



domain.,subunit:Interacts with the SH3 domain of the adapter proteins Nck (By similarity). Binds, via its CNH regulatory domain, to the N-terminal region of SPG3A.,tissue specificity:Appears to be ubiquitous, expressed in all tissue types examined. Isoform 5 appears to be more abundant in the brain, isoform 4 is predominant in the liver, skelet

Background

mitogen-activated protein kinase kinase kinase kinase 4(MAP4K4) Homo sapiens The protein encoded by this gene is a member of the serine/threonine protein kinase family. This kinase has been shown to specifically activate MAPK8/JNK. The activation of MAPK8 by this kinase is found to be inhibited by the dominant-negative mutants of MAP3K7/TAK1, MAP2K4/MKK4, and MAP2K7/MKK7, which suggests that this kinase may function through the MAP3K7-MAP2K4-MAP2K7 kinase cascade, and mediate the TNF-alpha signaling pathway. Alternatively spliced transcript variants encoding different isoforms have been identified. [provided by RefSeq, Jul 2008],

matters needing attention

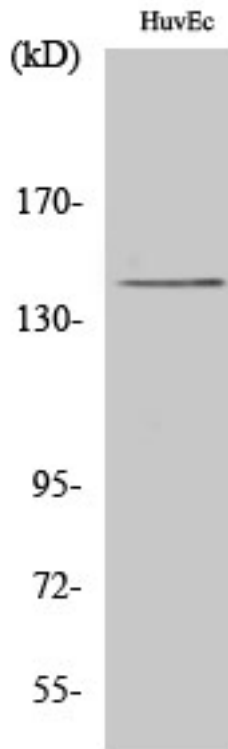
Avoid repeated freezing and thawing!

Usage suggestions

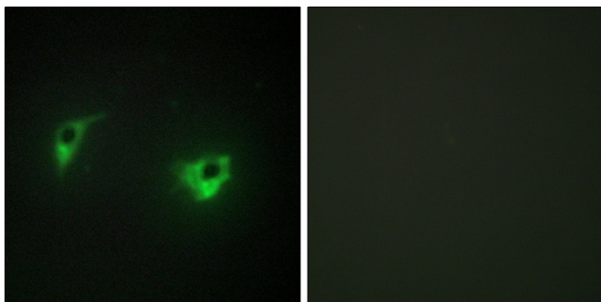
This product can be used in immunological reaction related experiments. For more information, please consult technical personnel.



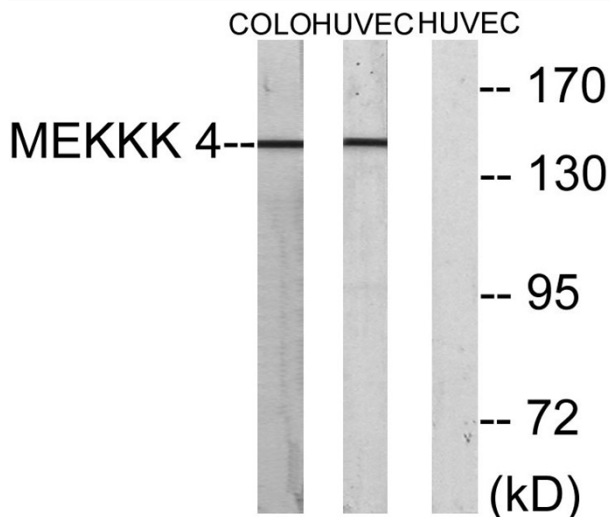
Products Images



Western Blot analysis of various cells using HGK Polyclonal Antibody



Immunofluorescence analysis of A549 cells, using MEKKK 4 Antibody. The picture on the right is blocked with the synthesized peptide.



Western blot analysis of lysates from HUVEC and COLO cells, using MEKKK 4 Antibody. The lane on the right is blocked with the synthesized peptide.

Nanjing BYabscience technology Co.,Ltd



Nanjing BYabscience technology Co.,Ltd

网址: www.njbybio.com

官方热线: 025-5229-8998

监督电话: 15950492658