



GRK 7 Polyclonal Antibody

Catalog No	BYab-14768
Isotype	IgG
Reactivity	Human;Rat;Mouse;
Applications	WB;IF;ELISA
Gene Name	GRK7
Protein Name	G protein-coupled receptor kinase 7
Immunogen	The antiserum was produced against synthesized peptide derived from human GRK7. AA range:371-420
Specificity	GRK 7 Polyclonal Antibody detects endogenous levels of GRK 7 protein.
Formulation	Liquid in PBS containing 50% glycerol, 0.5% BSA and 0.02% sodium azide.
Source	Polyclonal, Rabbit,IgG
Purification	The antibody was affinity-purified from rabbit antiserum by affinity-chromatography using epitope-specific immunogen.
Dilution	Western Blot: 1/500 - 1/2000. Immunofluorescence: 1/200 - 1/1000. ELISA: 1/20000. Not yet tested in other applications.
Concentration	1 mg/ml
Purity	≥90%
Storage Stability	-20°C/1 year
Synonyms	GRK7; GPRK7; G protein-coupled receptor kinase 7; G protein-coupled receptor kinase GRK7
Observed Band	62kD
Cell Pathway	Membrane ; Lipid-anchor .
Tissue Specificity	Retinal cones, outer and inner segments.
Function	catalytic activity:ATP + [G-protein-coupled receptor] = ADP + [G-protein-coupled receptor] phosphate.,function:Phosphorylates cone opsins thereby initiating their deactivation.,similarity:Belongs to the protein kinase superfamily. AGC Ser/Thr protein kinase family. GPRK subfamily.,similarity:Contains 1 AGC-kinase C-terminal domain.,similarity:Contains 1 protein kinase domain.,similarity:Contains 1 RGS domain.,tissue specificity:Retina. Cones and rod.,
Background	This gene encodes a member of the guanine nucleotide-binding protein (G protein)-coupled receptor kinase subfamily of the Ser/Thr protein kinase family. It

Nanjing BYabscience technology Co.,Ltd



is specifically expressed in the retina and the encoded protein has been shown to phosphorylate cone opsins and initiate their deactivation. [provided by RefSeq, Jul 2008],

matters needing attention

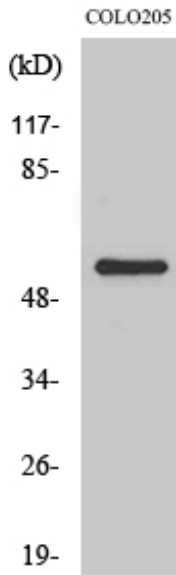
Avoid repeated freezing and thawing!

Usage suggestions

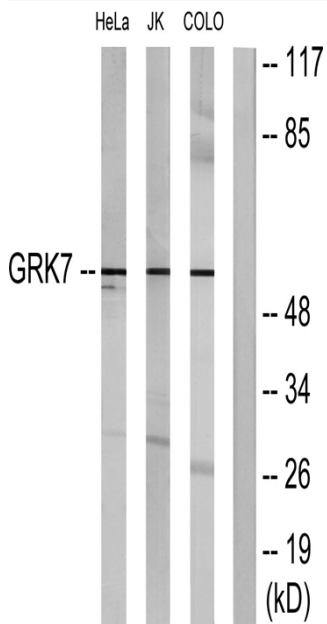
This product can be used in immunological reaction related experiments. For more information, please consult technical personnel.



Products Images



Western Blot analysis of various cells using GRK 7 Polyclonal Antibody



Western blot analysis of lysates from COLO205, Jurkat, and HeLa cells, using GRK7 Antibody. The lane on the right is blocked with the synthesized peptide.