



Fucokinase Polyclonal Antibody

Catalog No	BYab-14750
Isotype	IgG
Reactivity	Human;Mouse;Monkey
Applications	WB;IF;ELISA
Gene Name	FUK
Protein Name	L-fucose kinase
Immunogen	The antiserum was produced against synthesized peptide derived from human FUK. AA range:11-60
Specificity	Fucokinase Polyclonal Antibody detects endogenous levels of Fucokinase protein.
Formulation	Liquid in PBS containing 50% glycerol, 0.5% BSA and 0.02% sodium azide.
Source	Polyclonal, Rabbit,IgG
Purification	The antibody was affinity-purified from rabbit antiserum by affinity-chromatography using epitope-specific immunogen.
Dilution	Western Blot: 1/500 - 1/2000. Immunofluorescence: 1/200 - 1/1000. ELISA: 1/20000. Not yet tested in other applications.
Concentration	1 mg/ml
Purity	≥90%
Storage Stability	-20°C/1 year
Synonyms	FUK; L-fucose kinase; Fucokinase
Observed Band	110kD
Cell Pathway	cytoplasm,cytosol,
Tissue Specificity	Expressed in fibroblasts.
Function	catalytic activity:ATP + L-fucose = ADP + beta-L-fucose 1-phosphate.,function:Takes part in the salvage pathway for reutilization of fucose from the degradation of oligosaccharides.,similarity:Belongs to the GHMP kinase family.,
Background	fucokinase(FUK) Homo sapiens The protein encoded by this gene belongs to the GHMP (galacto-, homoserine, mevalonate and phosphomevalonate) kinase family and catalyzes the phosphorylation of L-fucose to form beta-L-fucose 1-phosphate. This enzyme catalyzes the first step in the utilization of free L-fucose in glycoprotein and glycolipid synthesis. L-fucose may be important in mediating a number of cell-cell interactions such as blood group antigen recognition,

Nanjing BYabscience technology Co.,Ltd



inflammation, and metastasis. While several transcript variants may exist for this gene, the full-length nature of only one has been described to date. [provided by RefSeq, Jul 2008],

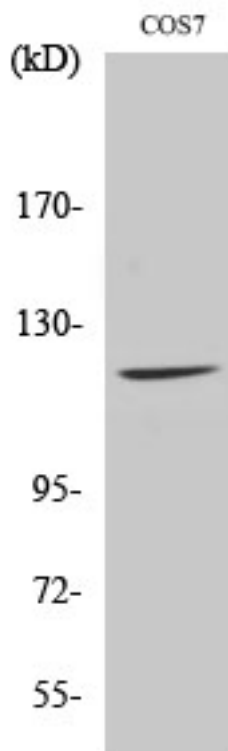
matters needing attention

Avoid repeated freezing and thawing!

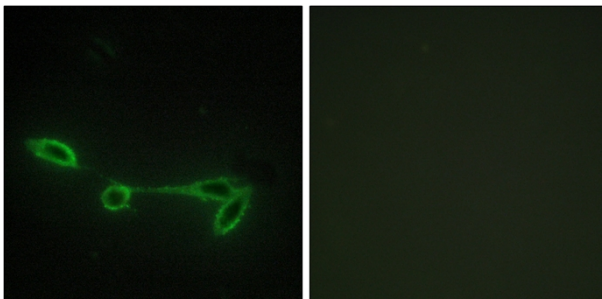
Usage suggestions

This product can be used in immunological reaction related experiments. For more information, please consult technical personnel.

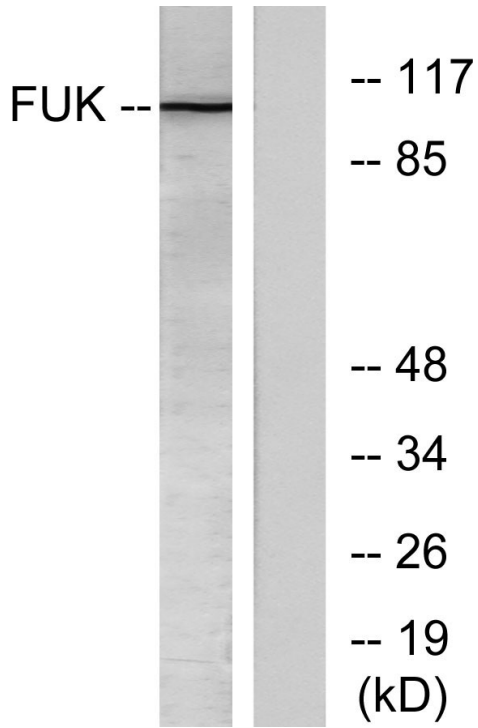
Products Images



Western Blot analysis of various cells using Fucokinase Polyclonal Antibody



Immunofluorescence analysis of NIH/3T3 cells, using FUK Antibody. The picture on the right is blocked with the synthesized peptide.



Western blot analysis of lysates from COS7 cells, treated with insulin 0.01U/ml 45', using FUK Antibody. The lane on the right is blocked with the synthesized peptide.