



Ethanolamine kinase 2 Polyclonal Antibody

Catalog No	BYab-14744
Isotype	IgG
Reactivity	Human;Mouse
Applications	WB;IHC;IF;ELISA
Gene Name	ETNK2
Protein Name	Ethanolamine kinase 2
Immunogen	The antiserum was produced against synthesized peptide derived from human EKI2. AA range:51-100
Specificity	Ethanolamine kinase 2 Polyclonal Antibody detects endogenous levels of Ethanolamine kinase 2 protein.
Formulation	Liquid in PBS containing 50% glycerol, 0.5% BSA and 0.02% sodium azide.
Source	Polyclonal, Rabbit,IgG
Purification	The antibody was affinity-purified from rabbit antiserum by affinity-chromatography using epitope-specific immunogen.
Dilution	WB: 1/500 - 1/2000. ELISA: 1/5000.. IF 1:50-200
Concentration	1 mg/ml
Purity	≥90%
Storage Stability	-20°C/1 year
Synonyms	ETNK2; EKI2; HMFT1716; Ethanolamine kinase 2; EKI 2; Ethanolamine kinase-like protein
Observed Band	45kD
Cell Pathway	cytosol,
Tissue Specificity	Expressed in kidney, liver, ovary, testis and prostate.
Function	catalytic activity:ATP + ethanolamine = ADP + O-phosphoethanolamine.,similarity:Belongs to the choline/ethanolamine kinase family.,
Background	The protein encoded by this gene is a member of choline/ethanolamine kinase family which catalyzes the first step of phosphatidylethanolamine (PtdEtn) biosynthesis via the cytidine diphosphate (CDP) ethanolamine pathway. Alternative splicing results in multiple transcript variants. [provided by RefSeq, Jul 2014],

Nanjing BYabscience technology Co.,Ltd



matters needing attention

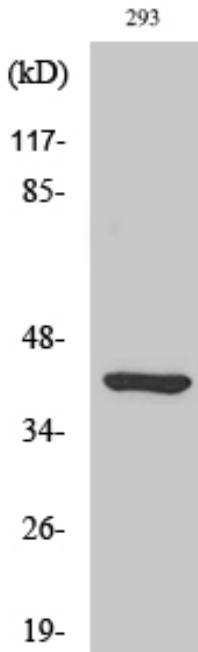
Avoid repeated freezing and thawing!

Usage suggestions

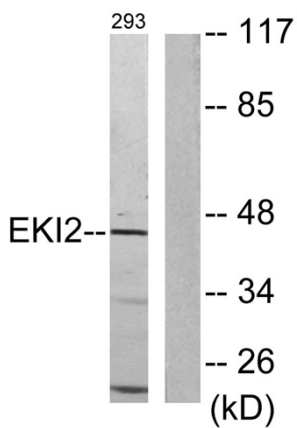
This product can be used in immunological reaction related experiments. For more information, please consult technical personnel.



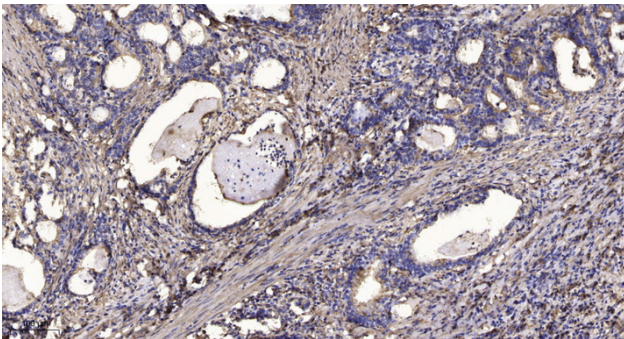
Products Images



Western Blot analysis of various cells using Ethanolamine kinase 2 Polyclonal Antibody



Western blot analysis of lysates from 293 cells, using EKI2 Antibody. The lane on the right is blocked with the synthesized peptide.



Immunohistochemical analysis of paraffin-embedded human Gastric adenocarcinoma. 1, Antibody was diluted at 1:200(4° overnight). 2, Tris-EDTA,pH9.0 was used for antigen retrieval. 3,Secondary antibody was diluted at 1:200(room temperature, 45min).