



DGK-κ Polyclonal Antibody

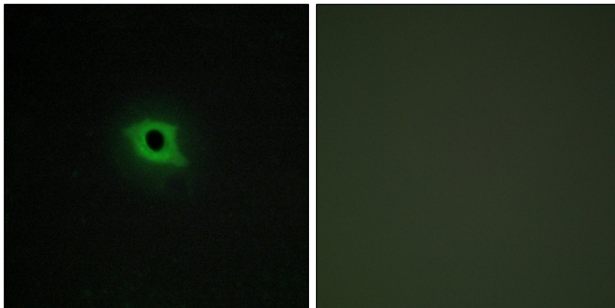
Catalog No	BYab-14729
Isotype	IgG
Reactivity	Human;Rat;Mouse;
Applications	IHC;IF;WB;ELISA
Gene Name	DGKK
Protein Name	Diacylglycerol kinase kappa
Immunogen	The antiserum was produced against synthesized peptide derived from human DGKK. AA range:1221-1270
Specificity	DGK-κ Polyclonal Antibody detects endogenous levels of DGK-κ protein.
Formulation	Liquid in PBS containing 50% glycerol, 0.5% BSA and 0.02% sodium azide.
Source	Polyclonal, Rabbit,IgG
Purification	The antibody was affinity-purified from rabbit antiserum by affinity-chromatography using epitope-specific immunogen.
Dilution	WB 1:500-2000 Immunohistochemistry: 1/100 - 1/300. Immunofluorescence: 1/200 - 1/1000. ELISA: 1/20000. Not yet tested in other applications.
Concentration	1 mg/ml
Purity	≥90%
Storage Stability	-20°C/1 year
Synonyms	DGKK; Diacylglycerol kinase kappa; DAG kinase kappa; 142 kDa diacylglycerol kinase; Diglyceride kinase kappa; DGK-kappa
Observed Band	142kD
Cell Pathway	Cell membrane ; Peripheral membrane protein .
Tissue Specificity	Expressed in testis, and to a lesser extent in placenta.
Function	catalytic activity:ATP + 1,2-diacylglycerol = ADP + 1,2-diacyl-sn-glycerol 3-phosphate.,enzyme regulation:Inhibited in response to H(2)O(2).,function:Phosphorylates diacylglycerol (DAG) to generate phosphatidic acid (PA).,PTM:Phosphorylated at Tyr-78 by some member of the SRC family in response to H(2)O(2).,similarity:Belongs to the eukaryotic diacylglycerol kinase family.,similarity:Contains 1 DAGKc domain.,similarity:Contains 1 PH domain.,similarity:Contains 2 phorbol-ester/DAG-type zinc fingers.,subunit:Does not form homooligomers.,tissue specificity:Expressed in testis, and to a lesser extent in placenta.,

Nanjing BYabscience technology Co.,Ltd

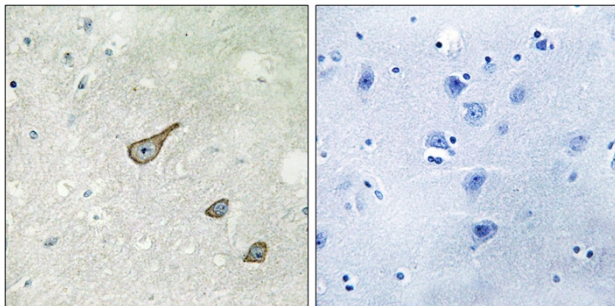


Background	The protein encoded by this gene is an enzyme that phosphorylates diacylglycerol, converting it to phosphatidic acid. The encoded protein is a membrane protein and is inhibited by hydrogen peroxide. Variations in this gene have been associated with hypospadias. [provided by RefSeq, Mar 2011],
matters needing attention	Avoid repeated freezing and thawing!
Usage suggestions	This product can be used in immunological reaction related experiments. For more information, please consult technical personnel.

Products Images



Immunofluorescence analysis of COS7 cells, using DGKK Antibody. The picture on the right is blocked with the synthesized peptide.



Immunohistochemistry analysis of paraffin-embedded human brain tissue, using DGKK Antibody. The picture on the right is blocked with the synthesized peptide.