



# DGK- $\theta$ Polyclonal Antibody

<b>Catalog No</b>	BYab-14727
<b>Isotype</b>	IgG
<b>Reactivity</b>	Human;Rat;Mouse;
<b>Applications</b>	WB;IHC;IF;ELISA
<b>Gene Name</b>	DGKQ
<b>Protein Name</b>	Diacylglycerol kinase theta
<b>Immunogen</b>	The antiserum was produced against synthesized peptide derived from human DGKQ. AA range:691-740
<b>Specificity</b>	DGK- $\theta$ Polyclonal Antibody detects endogenous levels of DGK- $\theta$ protein.
<b>Formulation</b>	Liquid in PBS containing 50% glycerol, 0.5% BSA and 0.02% sodium azide.
<b>Source</b>	Polyclonal, Rabbit,IgG
<b>Purification</b>	The antibody was affinity-purified from rabbit antiserum by affinity-chromatography using epitope-specific immunogen.
<b>Dilution</b>	WB: 1/500 - 1/2000. IHC: 1/100 - 1/300. ELISA: 1/10000.. IF 1:50-200
<b>Concentration</b>	1 mg/ml
<b>Purity</b>	≥90%
<b>Storage Stability</b>	-20°C/1 year
<b>Synonyms</b>	DGKQ; DAGK4; Diacylglycerol kinase theta; DAG kinase theta; Diglyceride kinase theta; DGK-theta
<b>Observed Band</b>	101kD
<b>Cell Pathway</b>	Cytoplasm . Cytoplasm, cytosol . Cell membrane . Cell junction, synapse . Cytoplasm, cytoskeleton . Nucleus . Nucleus speckle . Nucleus matrix . Translocates to the plasma membrane in response to steroid hormone receptor stimulation (PubMed:15632189). Translocation to the plasma membrane is dependent on G-protein coupled receptor stimulation and subsequent activation of PRKCE and probably PRKCH (PubMed:15632189). Translocates to the nucleus in response to thrombin stimulation (Probable). Association with the nuclear matrix is regulated by nerve growth factor (By similarity). .
<b>Tissue Specificity</b>	Brain,
<b>Function</b>	catalytic activity:ATP + 1,2-diacylglycerol = ADP + 1,2-diacyl-sn-glycerol 3-phosphate.,similarity:Belongs to the eukaryotic diacylglycerol kinase family.,similarity:Contains 1 DAGKc domain.,similarity:Contains 1 Ras-associating domain.,similarity:Contains 3 phorbol-ester/DAG-type zinc

Nanjing BYabscience technology Co.,Ltd



fingers.,

**Background**

The protein encoded by this gene contains three cysteine-rich domains, a proline-rich region, and a pleckstrin homology domain with an overlapping Ras-associating domain. It is localized in the speckle domains of the nucleus, and mediates the regeneration of phosphatidylinositol (PI) from diacylglycerol in the PI-cycle during cell signal transduction. [provided by RefSeq, Jul 2008],

**matters needing attention**

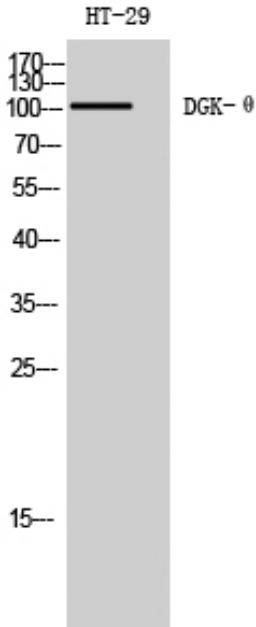
Avoid repeated freezing and thawing!

**Usage suggestions**

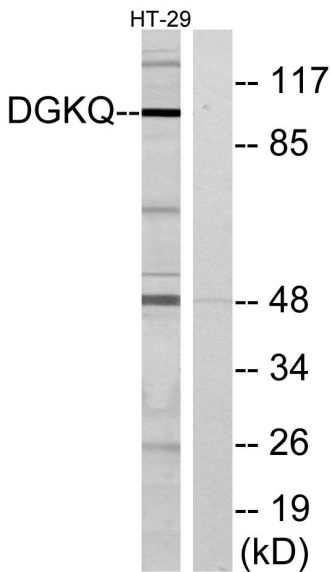
This product can be used in immunological reaction related experiments. For more information, please consult technical personnel.



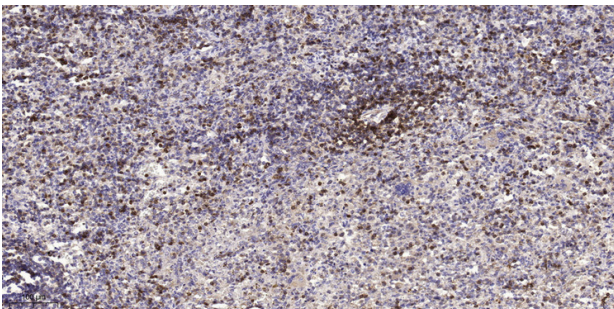
## Products Images



Western Blot analysis of HT-29 cells using DGK- $\theta$  Polyclonal Antibody



Western blot analysis of lysates from HT-29 cells, using DGKQ Antibody. The lane on the right is blocked with the synthesized peptide.



Immunohistochemical analysis of paraffin-embedded human spleen tissue. 1, primary Antibody was diluted at 1:200(4° overnight). 2, Sodium citrate pH 6.0 was used for antigen retrieval(>98°C, 20min). 3, Secondary antibody was diluted at 1:200