



DGK-ε Polyclonal Antibody

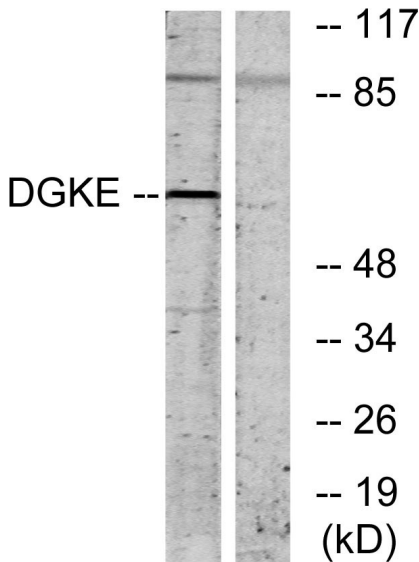
Catalog No	BYab-14724
Isotype	IgG
Reactivity	Human;Mouse;Rat
Applications	WB;IHC;IF;ELISA
Gene Name	DGKE
Protein Name	Diacylglycerol kinase epsilon
Immunogen	The antiserum was produced against synthesized peptide derived from human DGKE. AA range:161-210
Specificity	DGK-ε Polyclonal Antibody detects endogenous levels of DGK-ε protein.
Formulation	Liquid in PBS containing 50% glycerol, 0.5% BSA and 0.02% sodium azide.
Source	Polyclonal, Rabbit,IgG
Purification	The antibody was affinity-purified from rabbit antiserum by affinity-chromatography using epitope-specific immunogen.
Dilution	WB: 1/500 - 1/2000. IHC: 1/100 - 1/300. ELISA: 1/5000.. IF 1:50-200
Concentration	1 mg/ml
Purity	≥90%
Storage Stability	-20°C/1 year
Synonyms	DGKE; DAGK5; Diacylglycerol kinase epsilon; DAG kinase epsilon; Diglyceride kinase epsilon; DGK-epsilon
Observed Band	60kD
Cell Pathway	Membrane ; Single-pass membrane protein . Cytoplasm .
Tissue Specificity	Expressed predominantly in testis. Expressed in endothelium, platelets and podocytes (at protein level).
Function	catalytic activity:ATP + 1,2-diacylglycerol = ADP + 1,2-diacyl-sn-glycerol 3-phosphate.,function:Highly selective for arachidonate-containing species of diacylglycerol (DAG). May terminate signals transmitted through arachidonoyl-DAG or may contribute to the synthesis of phospholipids with defined fatty acid composition.,similarity:Belongs to the eukaryotic diacylglycerol kinase family.,similarity:Contains 1 DAGKc domain.,similarity:Contains 2 phorbol-ester/DAG-type zinc fingers.,tissue specificity:Expressed predominantly in testis.,

Nanjing BYabscience technology Co.,Ltd



Background	Diacylglycerol kinases are thought to be involved mainly in the regeneration of phosphatidylinositol (PI) from diacylglycerol in the PI-cycle during cell signal transduction. When expressed in mammalian cells, DGK-epsilon shows specificity for arachidonyl-containing diacylglycerol. DGK-epsilon is expressed predominantly in testis. [provided by RefSeq, Jul 2008],
matters needing attention	Avoid repeated freezing and thawing!
Usage suggestions	This product can be used in immunological reaction related experiments. For more information, please consult technical personnel.

Products Images



Western blot analysis of lysates from K562 cells, using DGKE Antibody. The lane on the right is blocked with the synthesized peptide.