



ChoKB Polyclonal Antibody

Catalog No	BYab-14707
Isotype	IgG
Reactivity	Human;Rat;Mouse;
Applications	WB;IHC;IF;ELISA
Gene Name	CHKB
Protein Name	Choline/ethanolamine kinase
Immunogen	The antiserum was produced against synthesized peptide derived from human CHKB. AA range:301-350
Specificity	ChoKB Polyclonal Antibody detects endogenous levels of ChoKB protein.
Formulation	Liquid in PBS containing 50% glycerol, 0.5% BSA and 0.02% sodium azide.
Source	Polyclonal, Rabbit,IgG
Purification	The antibody was affinity-purified from rabbit antiserum by affinity-chromatography using epitope-specific immunogen.
Dilution	WB: 1/500 - 1/2000. IHC: 1/100 - 1/300. ELISA: 1/20000.. IF 1:50-200
Concentration	1 mg/ml
Purity	≥90%
Storage Stability	-20°C/1 year
Synonyms	CHKB; CHETK; CHKL; Choline/ethanolamine kinase; Choline kinase beta; CK; CKB; Choline kinase-like protein; Ethanolamine kinase; EK; Ethanolamine kinase beta; EKB; choline/ethanolamine kinase beta; CKEKB
Observed Band	45kD
Cell Pathway	cytosol,
Tissue Specificity	Brain, Clones donated by RIKEN, Epithelium, Heart, Human lung, Lung, Skeletal muscle, T-ce
Function	catalytic activity:ATP + choline = ADP + O-phosphocholine., catalytic activity:ATP + ethanolamine = ADP + O-phosphoethanolamine., catalytic activity:Palmitoyl-CoA + L-carnitine = CoA + L-palmitoylcarnitine., miscellaneous:This protein is produced by a bicistronic gene which also produces the CHKB protein from a non-overlapping reading frame., miscellaneous:This protein is produced by a bicistronic gene which also produces the CPT1B protein from a non-overlapping reading frame., pathway:Lipid metabolism; fatty acid beta-oxidation., similarity:Belongs to the carnitine/choline acetyltransferase family., similarity:Belongs to the

Nanjing BYabscience technology Co.,Ltd



choline/ethanolamine kinase family.,tissue specificity:Strong expression in heart and skeletal muscle. No expression in liver and kidney.,

Background

Choline kinase (CK) and ethanolamine kinase (EK) catalyze the phosphorylation of choline/ethanolamine to phosphocholine/phosphoethanolamine. This is the first enzyme in the biosynthesis of phosphatidylcholine/phosphatidylethanolamine in all animal cells. The highly purified CKs from mammalian sources and their recombinant gene products have been shown to have EK activity also, indicating that both activities reside on the same protein. The choline kinase-like protein encoded by CHKL belongs to the choline/ethanolamine kinase family; however, its exact function is not known. Read-through transcripts are expressed from this locus that include exons from the downstream CPT1B locus. [provided by RefSeq, Jun 2009],

matters needing attention

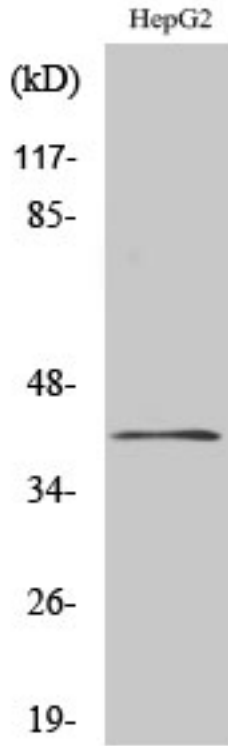
Avoid repeated freezing and thawing!

Usage suggestions

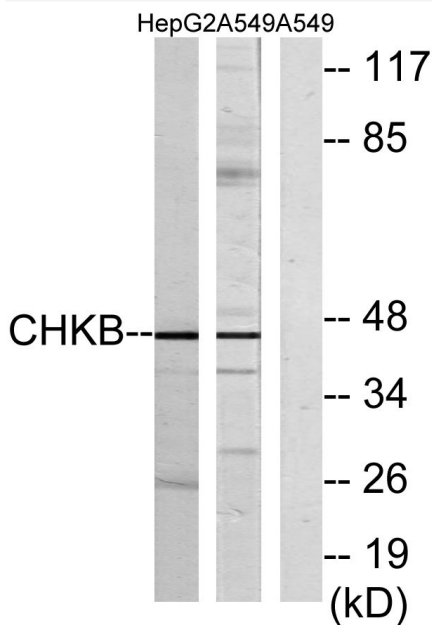
This product can be used in immunological reaction related experiments. For more information, please consult technical personnel.



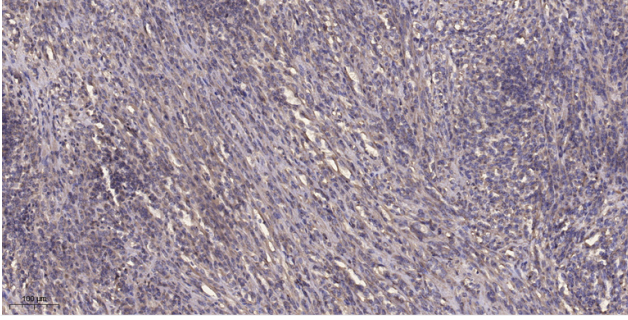
Products Images



Western Blot analysis of various cells using ChoKB Polyclonal Antibody



Western blot analysis of lysates from HepG2 and A549 cells, using CHK2 Antibody. The lane on the right is blocked with the synthesized peptide.



Immunohistochemical analysis of paraffin-embedded human Colon cancer. 1, Antibody was diluted at 1:200(4° overnight). 2, Tris-EDTA,pH9.0 was used for antigen retrieval. 3,Secondary antibody was diluted at 1:200(room temperature, 45min).