



Casein Kinase I α Polyclonal Antibody

Catalog No	BYab-14697
Isotype	IgG
Reactivity	Human;Mouse;Rat
Applications	WB;IHC;IF;ELISA
Gene Name	CSNK1A1
Protein Name	Casein kinase I isoform alpha
Immunogen	The antiserum was produced against synthesized peptide derived from human CKI-alpha. AA range:126-175
Specificity	Casein Kinase I α Polyclonal Antibody detects endogenous levels of Casein Kinase I α protein.
Formulation	Liquid in PBS containing 50% glycerol, 0.5% BSA and 0.02% sodium azide.
Source	Polyclonal, Rabbit,IgG
Purification	The antibody was affinity-purified from rabbit antiserum by affinity-chromatography using epitope-specific immunogen.
Dilution	Western Blot: 1/500 - 1/2000. Immunohistochemistry: 1/100 - 1/300. Immunofluorescence: 1/200 - 1/1000. ELISA: 1/20000. Not yet tested in other applications.
Concentration	1 mg/ml
Purity	≥90%
Storage Stability	-20°C/1 year
Synonyms	CSNK1A1; Casein kinase I isoform alpha; CKI-alpha; CK1
Observed Band	35kD
Cell Pathway	Cytoplasm . Cytoplasm, cytoskeleton, microtubule organizing center, centrosome . Chromosome, centromere, kinetochore . Nucleus speckle . Cytoplasm, cytoskeleton, cilium basal body . Cytoplasm, cytoskeleton, spindle . Localizes to the centrosome in interphase cells, and to kinetochore fibers during mitosis. Also recruited to the keratin cytoskeleton (PubMed:23902688). .
Tissue Specificity	Brain,Epithelium,Liver,Lung,Placenta,Skin,
Function	catalytic activity:ATP + a protein = ADP + a phosphoprotein.,function:Casein kinases are operationally defined by their preferential utilization of acidic proteins such as caseins as substrates. It can phosphorylate a large number of proteins. Participates in Wnt signaling. Phosphorylates CTNNB1 on 'Ser-45'. ,similarity:Belongs to the protein kinase superfamily.,similarity:Belongs to the protein kinase superfamily. CK1 Ser/Thr protein kinase family. Casein kinase I

Nanjing BYabscience technology Co.,Ltd



subfamily.,similarity:Contains 1 protein kinase domain.,subunit:Monomer.
Interacts with the Axin complex.,

Background

catalytic activity:ATP + a protein = ADP + a phosphoprotein.,function:Casein kinases are operationally defined by their preferential utilization of acidic proteins such as caseins as substrates. It can phosphorylate a large number of proteins. Participates in Wnt signaling. Phosphorylates CTNNB1 on 'Ser-45'.,similarity:Belongs to the protein kinase superfamily.,similarity:Belongs to the protein kinase superfamily. CK1 Ser/Thr protein kinase family. Casein kinase I subfamily.,similarity:Contains 1 protein kinase domain.,subunit:Monomer. Interacts with the Axin complex.,

matters needing attention

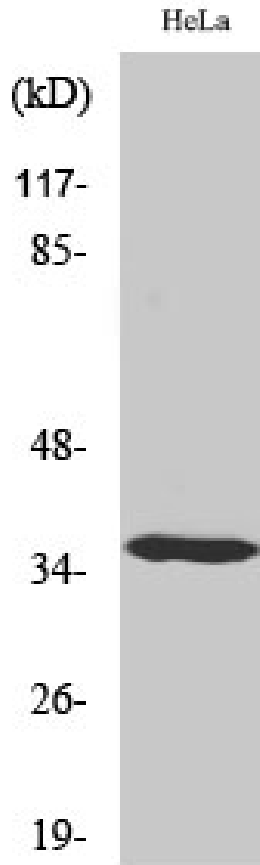
Avoid repeated freezing and thawing!

Usage suggestions

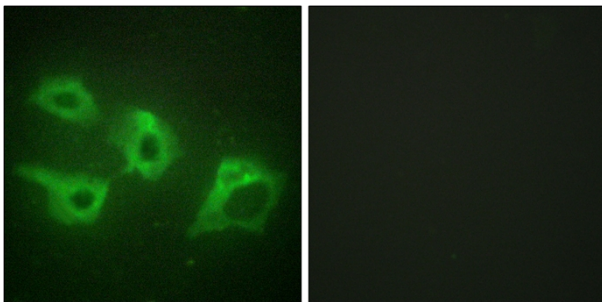
This product can be used in immunological reaction related experiments. For more information, please consult technical personnel.



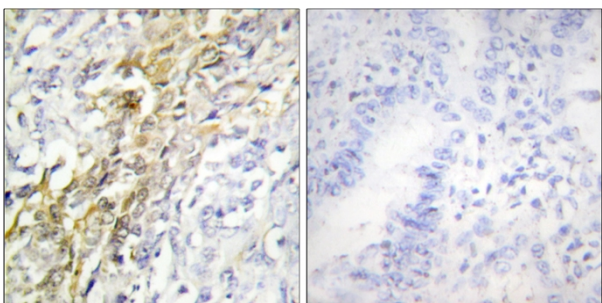
Products Images



Western Blot analysis of various cells using Casein Kinase I α Polyclonal Antibody

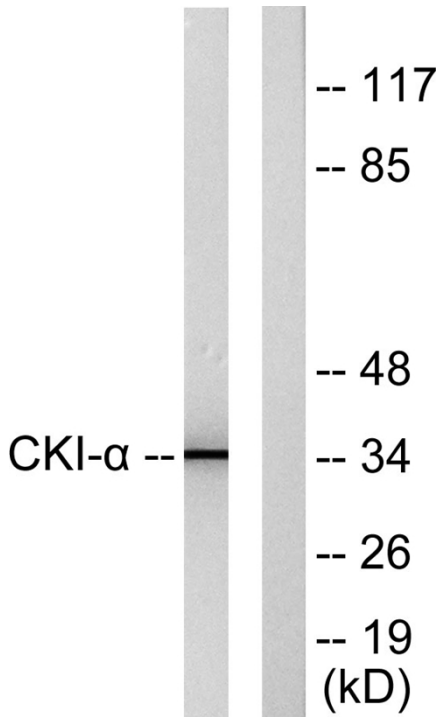


Immunofluorescence analysis of HeLa cells, using CKI-alpha Antibody. The picture on the right is blocked with the synthesized peptide.

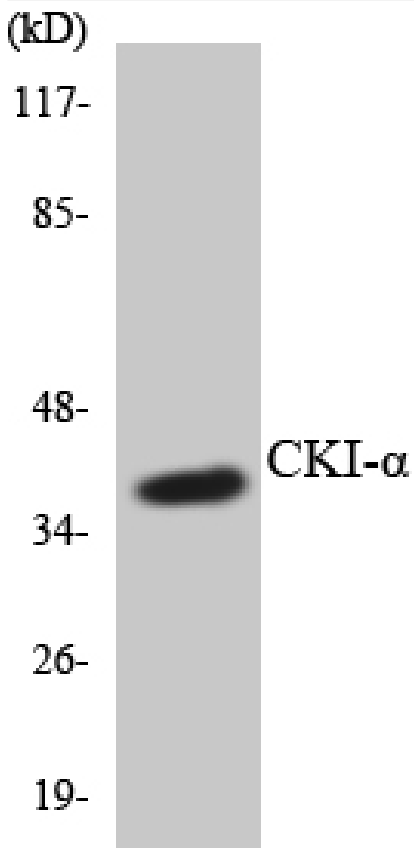


Immunohistochemistry analysis of paraffin-embedded human lung carcinoma tissue, using CKI-alpha Antibody. The picture on the right is blocked with the synthesized peptide.

Nanjing BYabscience technology Co.,Ltd



Western blot analysis of lysates from HeLa cells, using CKI-alpha Antibody. The lane on the right is blocked with the synthesized peptide.



Western blot analysis of the lysates from HT-29 cells using CKI-α antibody.