



CaMKIV Polyclonal Antibody

Catalog No	BYab-14689
Isotype	IgG
Reactivity	Human;Mouse;Rat
Applications	WB;IHC;IF;ELISA
Gene Name	CAMK4
Protein Name	Calcium/calmodulin-dependent protein kinase type IV
Immunogen	The antiserum was produced against synthesized peptide derived from human CaMK4. AA range:166-215
Specificity	CaMKIV Polyclonal Antibody detects endogenous levels of CaMKIV protein.
Formulation	Liquid in PBS containing 50% glycerol, 0.5% BSA and 0.02% sodium azide.
Source	Polyclonal, Rabbit,IgG
Purification	The antibody was affinity-purified from rabbit antiserum by affinity-chromatography using epitope-specific immunogen.
Dilution	Western Blot: 1/500 - 1/2000. Immunohistochemistry: 1/100 - 1/300. Immunofluorescence: 1/200 - 1/1000. ELISA: 1/5000. Not yet tested in other applications.
Concentration	1 mg/ml
Purity	≥90%
Storage Stability	-20°C/1 year
Synonyms	CAMK4; CAMK; CAMK-GR; CAMKIV; Calcium/calmodulin-dependent protein kinase type IV; CaMK IV; CaM kinase-GR
Observed Band	60kD
Cell Pathway	Cytoplasm. Nucleus. Localized in hippocampal neuron nuclei. In spermatids, associated with chromatin and nuclear matrix (By similarity).
Tissue Specificity	Expressed in brain, thymus, CD4 T-cells, testis and epithelial ovarian cancer tissue.
Function	catalytic activity:ATP + a protein = ADP + a phosphoprotein.,enzyme regulation:Activated by Ca(2+)/calmodulin. Binding of calmodulin may release intrasteric autoinhibition. Must be phosphorylated to be maximally active. Phosphorylated by CAMKK1 or CAMKK2. Autophosphorylation of the N-terminus is required for full activation. In part, activity is independent on Ca(2+)/calmodulin and autophosphorylation of Ser-336 allows to switch to a Ca(2+)/calmodulin-independent state (By similarity). Probably inactivated by serine/threonine protein phosphatase 2A.,function:Calcium/calmodulin-dependent protein kinase belonging to a proposed calcium-triggered signaling cascade. May

Nanjing BYabscience technology Co.,Ltd



be involved in transcriptional regulation. May be involved in regulation of microtubule dynamics. In vitro, phosphorylates CREB1, CREBBP, PRM2, MEF2A, MEF2D and STMN1/OP18. May be involved in spermatogenesis. May play a role i

Background

The product of this gene belongs to the serine/threonine protein kinase family, and to the Ca(2+)/calmodulin-dependent protein kinase subfamily. This enzyme is a multifunctional serine/threonine protein kinase with limited tissue distribution, that has been implicated in transcriptional regulation in lymphocytes, neurons and male germ cells. [provided by RefSeq, Jul 2008],

matters needing attention

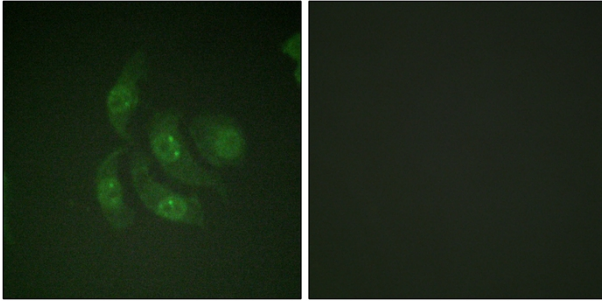
Avoid repeated freezing and thawing!

Usage suggestions

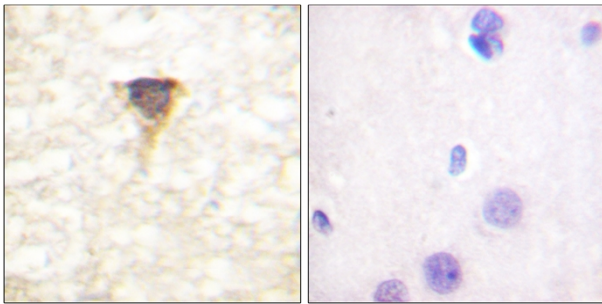
This product can be used in immunological reaction related experiments. For more information, please consult technical personnel.



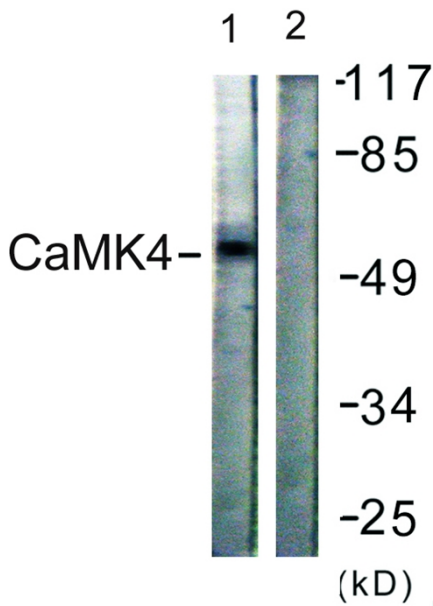
Products Images



Immunofluorescence analysis of HepG2 cells, using CaMK4 Antibody. The picture on the right is blocked with the synthesized peptide.



Immunohistochemistry analysis of paraffin-embedded human brain tissue, using CaMK4 Antibody. The picture on the right is blocked with the synthesized peptide.



Western blot analysis of lysates from K562 cells, treated with H₂O₂ 100uM 30', using CaMK4 Antibody. The lane on the right is blocked with the synthesized peptide.