



# Bmx Polyclonal Antibody

|                           |                                                                                                                                                                                                                                                                                                                                                                                                                                                                                                                                                                                    |
|---------------------------|------------------------------------------------------------------------------------------------------------------------------------------------------------------------------------------------------------------------------------------------------------------------------------------------------------------------------------------------------------------------------------------------------------------------------------------------------------------------------------------------------------------------------------------------------------------------------------|
| <b>Catalog No</b>         | BYab-14678                                                                                                                                                                                                                                                                                                                                                                                                                                                                                                                                                                         |
| <b>Isotype</b>            | IgG                                                                                                                                                                                                                                                                                                                                                                                                                                                                                                                                                                                |
| <b>Reactivity</b>         | Human;Mouse                                                                                                                                                                                                                                                                                                                                                                                                                                                                                                                                                                        |
| <b>Applications</b>       | WB;IHC;IF;ELISA                                                                                                                                                                                                                                                                                                                                                                                                                                                                                                                                                                    |
| <b>Gene Name</b>          | BMX                                                                                                                                                                                                                                                                                                                                                                                                                                                                                                                                                                                |
| <b>Protein Name</b>       | Cytoplasmic tyrosine-protein kinase BMX                                                                                                                                                                                                                                                                                                                                                                                                                                                                                                                                            |
| <b>Immunogen</b>          | The antiserum was produced against synthesized peptide derived from human C-terminal ETK. AA range:532-581                                                                                                                                                                                                                                                                                                                                                                                                                                                                         |
| <b>Specificity</b>        | Bmx Polyclonal Antibody detects endogenous levels of Bmx protein.                                                                                                                                                                                                                                                                                                                                                                                                                                                                                                                  |
| <b>Formulation</b>        | Liquid in PBS containing 50% glycerol, 0.5% BSA and 0.02% sodium azide.                                                                                                                                                                                                                                                                                                                                                                                                                                                                                                            |
| <b>Source</b>             | Polyclonal, Rabbit,IgG                                                                                                                                                                                                                                                                                                                                                                                                                                                                                                                                                             |
| <b>Purification</b>       | The antibody was affinity-purified from rabbit antiserum by affinity-chromatography using epitope-specific immunogen.                                                                                                                                                                                                                                                                                                                                                                                                                                                              |
| <b>Dilution</b>           | Western Blot: 1/500 - 1/2000. Immunohistochemistry: 1/100 - 1/300. Immunofluorescence: 1/200 - 1/1000. ELISA: 1/10000. Not yet tested in other applications.                                                                                                                                                                                                                                                                                                                                                                                                                       |
| <b>Concentration</b>      | 1 mg/ml                                                                                                                                                                                                                                                                                                                                                                                                                                                                                                                                                                            |
| <b>Purity</b>             | ≥90%                                                                                                                                                                                                                                                                                                                                                                                                                                                                                                                                                                               |
| <b>Storage Stability</b>  | -20°C/1 year                                                                                                                                                                                                                                                                                                                                                                                                                                                                                                                                                                       |
| <b>Synonyms</b>           | BMX; Cytoplasmic tyrosine-protein kinase BMX; Bone marrow tyrosine kinase gene in chromosome X protein; Epithelial and endothelial tyrosine kinase; ETK; NTK38                                                                                                                                                                                                                                                                                                                                                                                                                     |
| <b>Observed Band</b>      | 78kD                                                                                                                                                                                                                                                                                                                                                                                                                                                                                                                                                                               |
| <b>Cell Pathway</b>       | Cytoplasm . Localizes to the edges of spreading cells when complexed with BCAR1.                                                                                                                                                                                                                                                                                                                                                                                                                                                                                                   |
| <b>Tissue Specificity</b> | Highly expressed in cells with great migratory potential, including endothelial cells and metastatic carcinoma cell lines.                                                                                                                                                                                                                                                                                                                                                                                                                                                         |
| <b>Function</b>           | catalytic activity:ATP + a [protein]-L-tyrosine = ADP + a [protein]-L-tyrosine phosphate.,cofactor:Binds 1 zinc ion per subunit.,domain:SH2 domain mediates interaction with RUFY1.,function:Activity is required for interleukin 6 (IL-6) induced differentiation. May play a role in the growth and differentiation of hematopoietic cells. May be involved in signal transduction in endocardial and arterial endothelial cells.,induction:Activated by IL-6 through phosphatidylinositol 3-kinase (PI3-kinase) pathway. It is likely that activation occurs through binding of |

**Nanjing BYabscience technology Co.,Ltd**



phosphoinositides to the PH domain.,similarity:Belongs to the protein kinase superfamily. Tyr protein kinase family. TEC subfamily.,similarity:Contains 1 Btk-type zinc finger.,similarity:Contains 1 PH domain.,similarity:Contains 1 protein kinase domain.,similarity:Contains 1 SH2 domain.,subunit:Interacts with RUFY1 and RUFY2.,tissue sp

**Background**

This gene encodes a non-receptor tyrosine kinase belonging to the Tec kinase family. The protein contains a PH-like domain, which mediates membrane targeting by binding to phosphatidylinositol 3,4,5-triphosphate (PIP3), and a SH2 domain that binds to tyrosine-phosphorylated proteins and functions in signal transduction. The protein is implicated in several signal transduction pathways including the Stat pathway, and regulates differentiation and tumorigenicity of several types of cancer cells. Alternatively spliced transcript variants have been found for this gene. [provided by RefSeq, Mar 2016],

**matters needing attention**

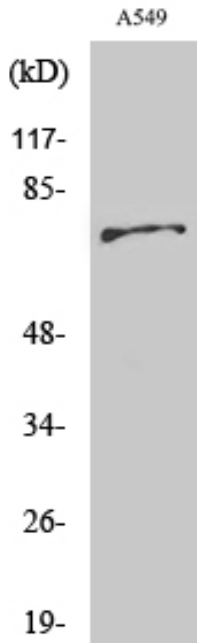
Avoid repeated freezing and thawing!

**Usage suggestions**

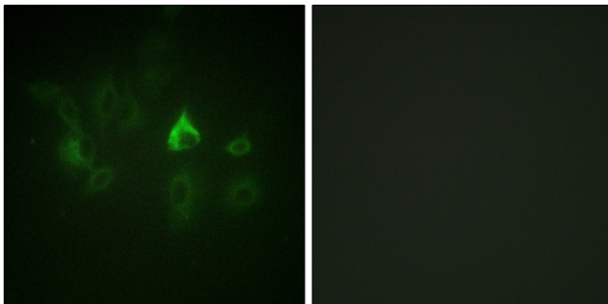
This product can be used in immunological reaction related experiments. For more information, please consult technical personnel.



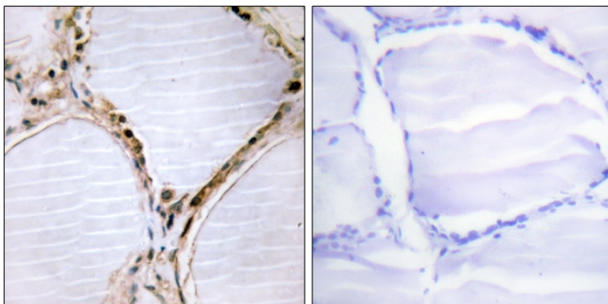
## Products Images



Western Blot analysis of various cells using Bmx Polyclonal Antibody diluted at 1:1000

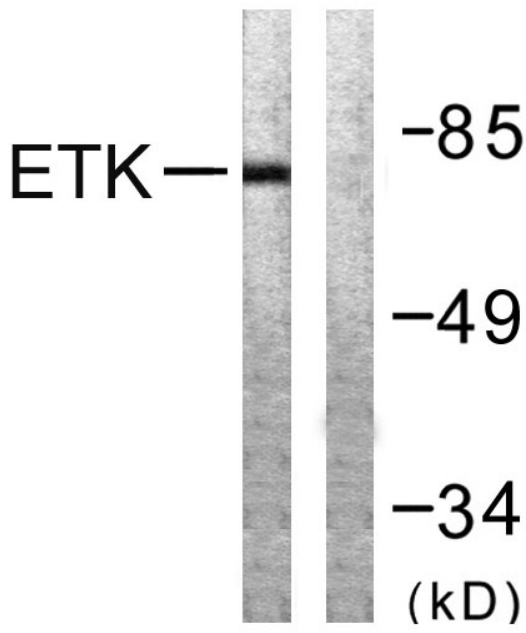


Immunofluorescence analysis of A549 cells, using ETK Antibody. The picture on the right is blocked with the synthesized peptide.



Immunohistochemistry analysis of paraffin-embedded human thyroid gland tissue, using ETK Antibody. The picture on the right is blocked with the synthesized peptide.

Nanjing BYabscience technology Co.,Ltd



Western blot analysis of lysates from A549 cells, using ETK Antibody. The lane on the right is blocked with the synthesized peptide.