



Alpha-protein Kinase 2 Polyclonal Antibody

Catalog No	BYab-14655
Isotype	IgG
Reactivity	Human;Rat;Mouse;
Applications	IHC;IF;ELISA
Gene Name	ALPK2
Protein Name	Alpha-protein kinase 2
Immunogen	The antiserum was produced against synthesized peptide derived from human ALPK2. AA range:1741-1790
Specificity	Alpha-protein Kinase 2 Polyclonal Antibody detects endogenous levels of Alpha-protein Kinase 2 protein.
Formulation	Liquid in PBS containing 50% glycerol, 0.5% BSA and 0.02% sodium azide.
Source	Polyclonal, Rabbit,IgG
Purification	The antibody was affinity-purified from rabbit antiserum by affinity-chromatography using epitope-specific immunogen.
Dilution	IHC: 1/100 - 1/300. ELISA: 1/40000.. IF 1:50-200
Concentration	1 mg/ml
Purity	≥90%
Storage Stability	-20°C/1 year
Synonyms	ALPK2; HAK; Alpha-protein kinase 2; Heart alpha-protein kinase
Observed Band	
Cell Pathway	Basolateral cell membrane .
Tissue Specificity	Expressed in developing cardiac tissue and cardiomyocytes (at protein level).
Function	function:Kinases that recognize phosphorylation sites in which the surrounding peptides have an alpha-helical conformation.,similarity:Belongs to the protein kinase superfamily. Alpha-type protein kinase family. ALPK subfamily.,similarity:Contains 1 alpha-type protein kinase domain.,similarity:Contains 1 Ig-like (immunoglobulin-like) domain.,
Background	function:Kinases that recognize phosphorylation sites in which the surrounding peptides have an alpha-helical conformation.,similarity:Belongs to the protein kinase superfamily. Alpha-type protein kinase family. ALPK subfamily.,similarity:Contains 1 alpha-type protein kinase domain.,similarity:Contains 1 Ig-like (immunoglobulin-like) domain.,

Nanjing BYabscience technology Co.,Ltd



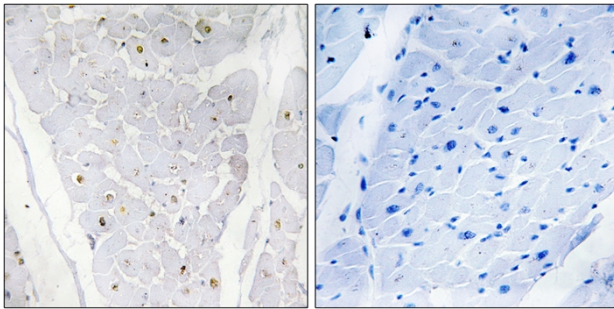
matters needing attention

Avoid repeated freezing and thawing!

Usage suggestions

This product can be used in immunological reaction related experiments. For more information, please consult technical personnel.

Products Images



Immunohistochemistry analysis of paraffin-embedded human heart , using ALPK2 Antibody. The picture on the right is blocked with the synthesized peptide.