



ADCK5 Polyclonal Antibody

Catalog No	BYab-14646
Isotype	IgG
Reactivity	Human;Rat;Mouse;
Applications	WB;IF;ELISA
Gene Name	ADCK5
Protein Name	Uncharacterized aarF domain-containing protein kinase 5
Immunogen	The antiserum was produced against synthesized peptide derived from human ADCK5. AA range:151-200
Specificity	ADCK5 Polyclonal Antibody detects endogenous levels of ADCK5 protein.
Formulation	Liquid in PBS containing 50% glycerol, 0.5% BSA and 0.02% sodium azide.
Source	Polyclonal, Rabbit,IgG
Purification	The antibody was affinity-purified from rabbit antiserum by affinity-chromatography using epitope-specific immunogen.
Dilution	Western Blot: 1/500 - 1/2000. Immunofluorescence: 1/200 - 1/1000. ELISA: 1/20000. Not yet tested in other applications.
Concentration	1 mg/ml
Purity	≥90%
Storage Stability	-20°C/1 year
Synonyms	ADCK5; Uncharacterized aarF domain-containing protein kinase 5
Observed Band	66kD
Cell Pathway	Membrane ; Single-pass membrane protein .
Tissue Specificity	Brain,Colon,Ovary,Prostate,Small intestine,
Function	function:The function of this protein is not yet clear. It is not known if it has protein kinase activity and what type of substrate it would phosphorylate (Ser, Thr or Tyr).,similarity:Belongs to the protein kinase superfamily. ADCK protein kinase family.,similarity:Contains 1 protein kinase domain.,
Background	function:The function of this protein is not yet clear. It is not known if it has protein kinase activity and what type of substrate it would phosphorylate (Ser, Thr or Tyr).,similarity:Belongs to the protein kinase superfamily. ADCK protein kinase family.,similarity:Contains 1 protein kinase domain.,

Nanjing BYabscience technology Co.,Ltd



matters needing attention

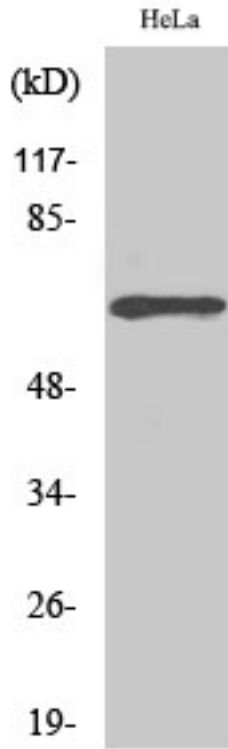
Avoid repeated freezing and thawing!

Usage suggestions

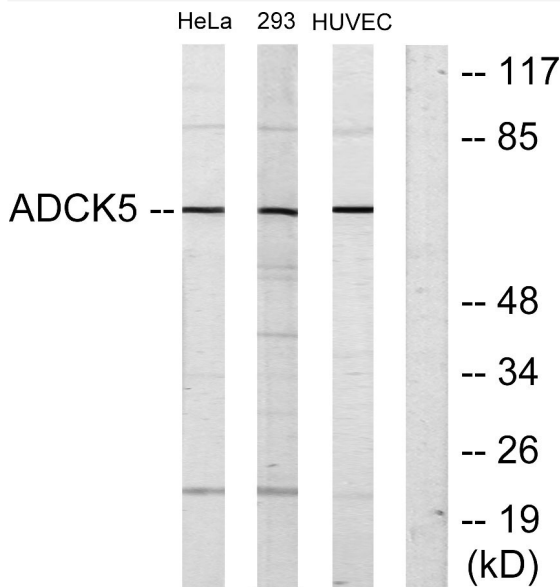
This product can be used in immunological reaction related experiments. For more information, please consult technical personnel.



Products Images



Western Blot analysis of various cells using ADCK5 Polyclonal Antibody



Western blot analysis of lysates from HeLa, 293, and HUVEC cells, using ADCK5 Antibody. The lane on the right is blocked with the synthesized peptide.