



# ULK1 (phospho-Ser757) rabbit pAb

<b>Catalog No</b>	BYab-14627
<b>Isotype</b>	IgG
<b>Reactivity</b>	Human;Mouse;Rat
<b>Applications</b>	WB
<b>Gene Name</b>	ULK1 KIAA0722
<b>Protein Name</b>	ULK1 (Ser757)
<b>Immunogen</b>	Synthesized phospho peptide around human ULK1 (Ser757)
<b>Specificity</b>	This antibody detects endogenous levels of Human Mouse Rat ULK1 (phospho-Ser757)
<b>Formulation</b>	Liquid in PBS containing 50% glycerol, 0.5% BSA and 0.02% sodium azide.
<b>Source</b>	Polyclonal, Rabbit,IgG
<b>Purification</b>	The antibody was affinity-purified from rabbit serum by affinity-chromatography using specific immunogen.
<b>Dilution</b>	WB 1:1000-2000
<b>Concentration</b>	1 mg/ml
<b>Purity</b>	≥90%
<b>Storage Stability</b>	-20°C/1 year
<b>Synonyms</b>	Serine/threonine-protein kinase ULK1 (EC 2.7.11.1) (Autophagy-related protein 1 homolog) (ATG1) (hATG1) (Unc-51-like kinase 1)
<b>Observed Band</b>	115kD
<b>Cell Pathway</b>	Cytoplasm, cytosol . Preautophagosomal structure . Under starvation conditions, is localized to punctate structures primarily representing the isolation membrane that sequesters a portion of the cytoplasm resulting in the formation of an autophagosome. .
<b>Tissue Specificity</b>	Ubiquitously expressed. Detected in the following adult tissues: skeletal muscle, heart, pancreas, brain, placenta, liver, kidney, and lung.
<b>Function</b>	catalytic activity:ATP + a protein = ADP + a phosphoprotein.,function:Involved in axon growth. Plays an essential role in neurite extension of cerebellar granule cells.,similarity:Belongs to the protein kinase superfamily. Ser/Thr protein kinase family. APG1/unc-51/ULK1 subfamily.,similarity:Contains 1 protein kinase domain.,subunit:Interacts with GABARAP and GABARAPL2.,tissue specificity:Ubiquitously expressed. Detected in the following adult tissues: skeletal muscle, heart, pancreas, brain, placenta, liver, kidney, and lung.,

Nanjing BYabscience technology Co.,Ltd



## Background

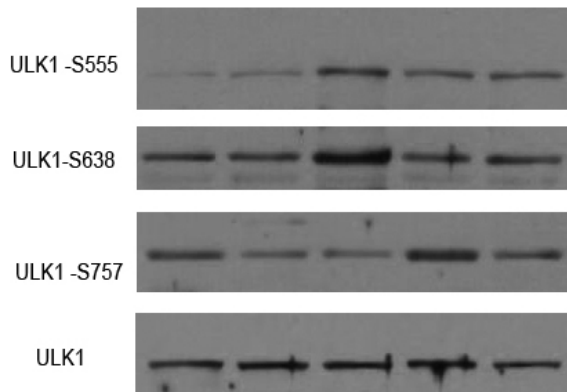
### matters needing attention

Avoid repeated freezing and thawing!

### Usage suggestions

This product can be used in immunological reaction related experiments. For more information, please consult technical personnel.

## Products Images



Western Blot analysis of various cell lysis(provided by our customer). Primary Antibody was diluted at 1:1000. Secondary antibody(catalog#:RS23920 was diluted at 1:10000