



Axl (phospho-Tyr702) rabbit pAb

Catalog No	BYab-14586
Isotype	IgG
Reactivity	Human;Rat;Mouse;
Applications	WB
Gene Name	AXL UFO
Protein Name	Axl (Tyr702)
Immunogen	Synthesized phosho peptide around human Axl (Tyr702)
Specificity	This antibody detects endogenous levels of Human Axl (phospho-Tyr702)
Formulation	Liquid in PBS containing 50% glycerol, 0.5% BSA and 0.02% sodium azide.
Source	Polyclonal, Rabbit,IgG
Purification	The antibody was affinity-purified from rabbit serum by affinity-chromatography using specific immunogen.
Dilution	WB 1:1000-2000
Concentration	1 mg/ml
Purity	≥90%
Storage Stability	-20°C/1 year
Synonyms	AXL; UFO; Tyrosine-protein kinase receptor UFO; AXL oncogene
Observed Band	130kD
Cell Pathway	Cell membrane ; Single-pass type I membrane protein .
Tissue Specificity	Highly expressed in metastatic colon tumors. Expressed in primary colon tumors. Weakly expressed in normal colon tissue.
Function	catalytic activity:ATP + a protein = ADP + a phosphoprotein.,caution:Although authors have considered STK6 and STK15 as two different proteins, it is clear that they are the same protein.,disease:Defects in AURKA are responsible for numerical centrosome aberrations including aneuploidy.,function:May play a role in cell cycle regulation during anaphase and/or telophase, in relation to the function of the centrosome/spindle pole region during chromosome segregation. May be involved in microtubule formation and/or stabilization. Phosphorylates ARHGEF2 and BORA.,PTM:Phosphorylated upon DNA damage, probably by ATM or ATR.,similarity:Belongs to the protein kinase superfamily.,similarity:Belongs to the protein kinase superfamily. Ser/Thr protein kinase family. Aurora subfamily.,similarity:Contains 1 protein kinase domain.,subcellular location:Localizes on centrosomes in interphase cells and at

Nanjing BYabscience technology Co.,Ltd



Background

The protein encoded by this gene is a cell cycle-regulated kinase that appears to be involved in microtubule formation and/or stabilization at the spindle pole during chromosome segregation. The encoded protein is found at the centrosome in interphase cells and at the spindle poles in mitosis. This gene may play a role in tumor development and progression. A processed pseudogene of this gene has been found on chromosome 1, and an unprocessed pseudogene has been found on chromosome 10. Multiple transcript variants encoding the same protein have been found for this gene. [provided by RefSeq, Jul 2008],

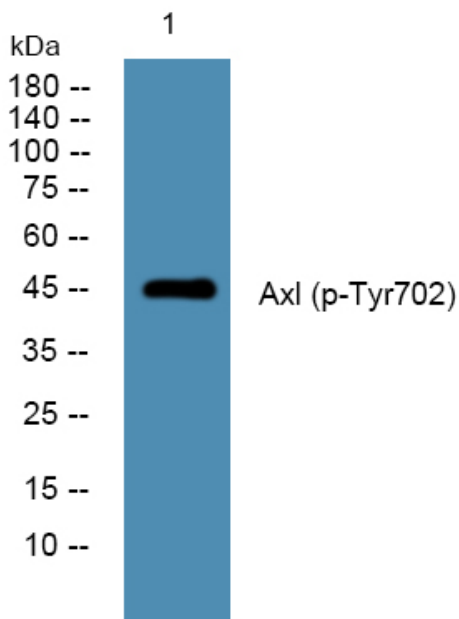
matters needing attention

Avoid repeated freezing and thawing!

Usage suggestions

This product can be used in immunological reaction related experiments. For more information, please consult technical personnel.

Products Images



Western blot analysis of lysates from K562 cells, primary antibody was diluted at 1:1000, 4° over night