



# IRAK-1 (phospho Thr387) Polyclonal Antibody

<b>Catalog No</b>	BYab-14574
<b>Isotype</b>	IgG
<b>Reactivity</b>	Human;Mouse;Rat
<b>Applications</b>	WB;IHC
<b>Gene Name</b>	IRAK1
<b>Protein Name</b>	Interleukin-1 receptor-associated kinase 1
<b>Immunogen</b>	The antiserum was produced against synthesized peptide derived from human IRAK1 around the phosphorylation site of Thr387. AA range:353-402
<b>Specificity</b>	Phospho-IRAK-1 (T387) Polyclonal Antibody detects endogenous levels of IRAK-1 protein only when phosphorylated at T387.
<b>Formulation</b>	Liquid in PBS containing 50% glycerol, 0.5% BSA and 0.02% sodium azide.
<b>Source</b>	Polyclonal, Rabbit,IgG
<b>Purification</b>	The antibody was affinity-purified from rabbit antiserum by affinity-chromatography using epitope-specific immunogen.
<b>Dilution</b>	WB 1:500-2000;IHC-p 1:50-300
<b>Concentration</b>	1 mg/ml
<b>Purity</b>	≥90%
<b>Storage Stability</b>	-20°C/1 year
<b>Synonyms</b>	IRAK1; IRAK; Interleukin-1 receptor-associated kinase 1; IRAK-1
<b>Observed Band</b>	
<b>Cell Pathway</b>	Cytoplasm . Nucleus . Lipid droplet . Translocates to the nucleus when sumoylated. RSAD2/viperin recruits it to the lipid droplet (By similarity).
<b>Tissue Specificity</b>	Isoform 1 and isoform 2 are ubiquitously expressed in all tissues examined, with isoform 1 being more strongly expressed than isoform 2.
<b>Function</b>	catalytic activity:ATP + a protein = ADP + a phosphoprotein.,cofactor:Magnesium.,function: Binds to the IL-1 type I receptor following IL-1 engagement, triggering intracellular signaling cascades leading to transcriptional up-regulation and mRNA stabilization. Isoform 1 binds rapidly but is then degraded allowing isoform 2 to mediate a slower, more sustained response to the cytokine. Isoform 2 is inactive suggesting that the kinase activity of this enzyme is not required for IL-1 signaling. Once phosphorylated, IRAK1 recruits the adapter protein PELI1.,PTM:Autophosphorylated or is transphosphorylated by IRAK4 following recruitment to the IL-1RI. In the case of isoform 1, this is linked to ubiquitination and degradation.,similarity:Belongs to the protein kinase

Nanjing BYabscience technology Co.,Ltd



superfamily.,similarity:Belongs to the protein kinase superfamily. TKL Ser/Thr protein kinase family. Pelle subfamily.,similarity:

**Background**

This gene encodes the interleukin-1 receptor-associated kinase 1, one of two putative serine/threonine kinases that become associated with the interleukin-1 receptor (IL1R) upon stimulation. This gene is partially responsible for IL1-induced upregulation of the transcription factor NF-kappa B. Alternatively spliced transcript variants encoding different isoforms have been found for this gene. [provided by RefSeq, Jul 2008],

**matters needing attention**

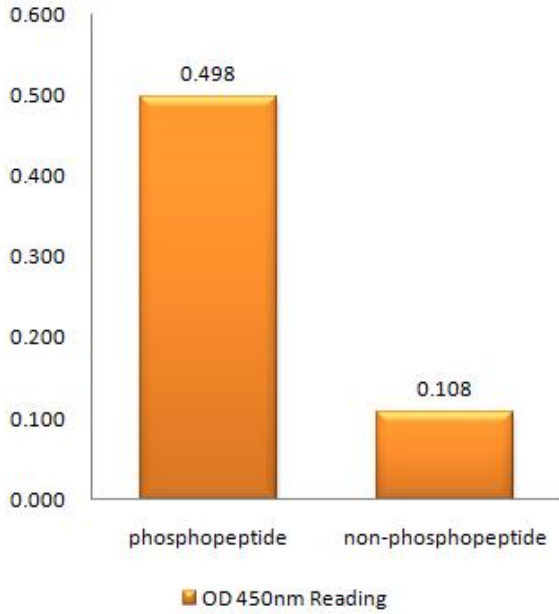
Avoid repeated freezing and thawing!

**Usage suggestions**

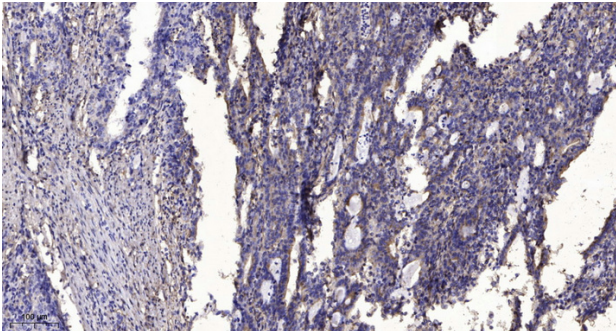
This product can be used in immunological reaction related experiments. For more information, please consult technical personnel.



## Products Images



Enzyme-Linked Immunosorbent Assay (Phospho-ELISA) for Immunogen Phosphopeptide (Phospho-left) and Non-Phosphopeptide (Phospho-right), using IRAK1 (Phospho-Thr387) Antibody



Immunohistochemical analysis of paraffin-embedded human Gastric adenocarcinoma. 1, Antibody was diluted at 1:200(4° overnight). 2, Tris-EDTA,pH9.0 was used for antigen retrieval. 3,Secondary antibody was diluted at 1:200(room temperature, 45min).