



TTK (phospho Thr676) Polyclonal Antibody

Catalog No	BYab-14561
Isotype	IgG
Reactivity	Human;Mouse
Applications	IHC;IF;ELISA
Gene Name	TTK
Protein Name	Dual specificity protein kinase TTK
Immunogen	The antiserum was produced against synthesized peptide derived from human TTK around the phosphorylation site of Thr676. AA range:642-691
Specificity	Phospho-TTK (T676) Polyclonal Antibody detects endogenous levels of TTK protein only when phosphorylated at T676.
Formulation	Liquid in PBS containing 50% glycerol, 0.5% BSA and 0.02% sodium azide.
Source	Polyclonal, Rabbit,IgG
Purification	The antibody was affinity-purified from rabbit antiserum by affinity-chromatography using epitope-specific immunogen.
Dilution	IHC: 1/100 - 1/300. ELISA: 1/20000.. IF 1:50-200
Concentration	1 mg/ml
Purity	≥90%
Storage Stability	-20°C/1 year
Synonyms	TTK; MPS1; MPS1L1; Dual specificity protein kinase TTK; Phosphotyrosine picked threonine-protein kinase; PYT
Observed Band	
Cell Pathway	kinetochore,cytoplasm,spindle,membrane,
Tissue Specificity	Present in rapidly proliferating cell lines.
Function	catalytic activity:ATP + a protein = ADP + a phosphoprotein.,function:Phosphorylates proteins on serine, threonine, and tyrosine. Probably associated with cell proliferation.,similarity:Belongs to the protein kinase superfamily.,similarity:Belongs to the protein kinase superfamily. Ser/Thr protein kinase family.,similarity:Contains 1 protein kinase domain.,tissue specificity:Present in rapidly proliferating cell lines.,
Background	TTK protein kinase(TTK) Homo sapiens This gene encodes a dual specificity protein kinase with the ability to phosphorylate tyrosine, serine and threonine. Associated with cell proliferation, this protein is essential for chromosome

Nanjing BYabscience technology Co.,Ltd



alignment at the centromere during mitosis and is required for centrosome duplication. It has been found to be a critical mitotic checkpoint protein for accurate segregation of chromosomes during mitosis. Tumorigenesis may occur when this protein fails to degrade and produces excess centrosomes resulting in aberrant mitotic spindles. Alternative splicing results in multiple transcript variants. [provided by RefSeq, Nov 2009],

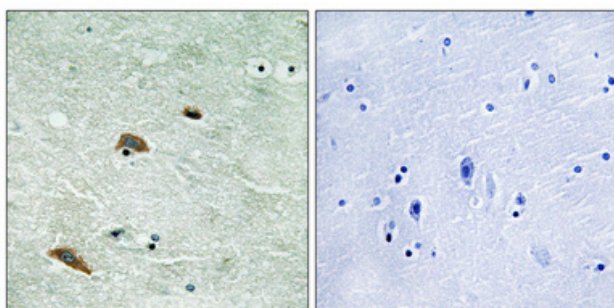
matters needing attention

Avoid repeated freezing and thawing!

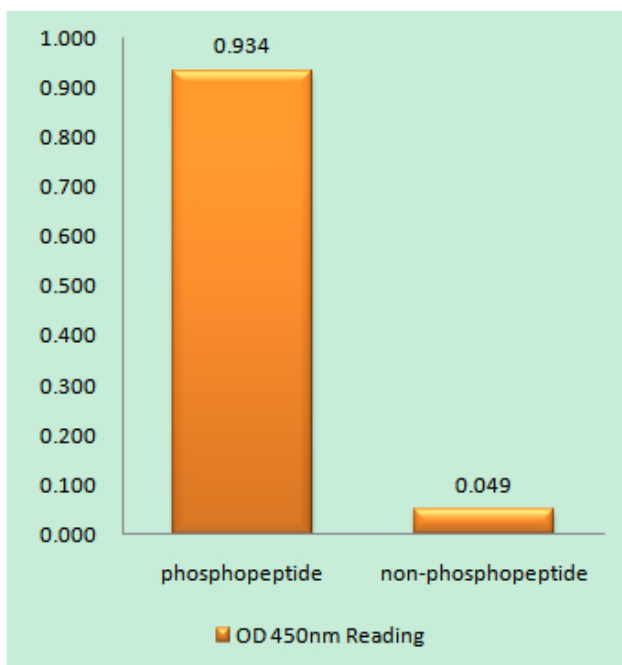
Usage suggestions

This product can be used in immunological reaction related experiments. For more information, please consult technical personnel.

Products Images



Immunohistochemical analysis of paraffin-embedded Human brain. Antibody was diluted at 1:100(4° overnight). High-pressure and temperature Tris-EDTA,pH8.0 was used for antigen retrieval. Negative contrl (right) obtained from antibody was pre-absorbed by immunogen peptide.



Enzyme-Linked Immunosorbent Assay (Phospho-ELISA) for Immunogen Phosphopeptide (Phospho-left) and Non-Phosphopeptide (Phospho-right), using TTK (Phospho-Thr676) Antibody