



LIMK-2 (phospho Ser283) Polyclonal Antibody

| | |
|---------------------------|--|
| Catalog No | BYab-14539 |
| Isotype | IgG |
| Reactivity | Human;Mouse;Rat;Monkey |
| Applications | WB;IHC;IF;ELISA |
| Gene Name | LIMK2 |
| Protein Name | LIM domain kinase 2 |
| Immunogen | The antiserum was produced against synthesized peptide derived from human LIMK2 around the phosphorylation site of Ser283. AA range:249-298 |
| Specificity | Phospho-LIMK-2 (S283) Polyclonal Antibody detects endogenous levels of LIMK-2 protein only when phosphorylated at S283. |
| Formulation | Liquid in PBS containing 50% glycerol, 0.5% BSA and 0.02% sodium azide. |
| Source | Polyclonal, Rabbit,IgG |
| Purification | The antibody was affinity-purified from rabbit antiserum by affinity-chromatography using epitope-specific immunogen. |
| Dilution | WB: 1/500 - 1/2000. IHC: 1/100 - 1/300. ELISA: 1/5000.. IF 1:50-200 |
| Concentration | 1 mg/ml |
| Purity | ≥90% |
| Storage Stability | -20°C/1 year |
| Synonyms | LIMK2; LIM domain kinase 2; LIMK-2 |
| Observed Band | 72kD |
| Cell Pathway | Cytoplasm, cytoskeleton, spindle . Cytoplasm, cytoskeleton, microtubule organizing center, centrosome .; [Isoform LIMK2a]: Cytoplasm . Nucleus .; [Isoform LIMK2b]: Cytoplasm . Cytoplasm, perinuclear region . Nucleus . Mainly present in the cytoplasm and is scarcely translocated to the nucleus. . |
| Tissue Specificity | Hepatoma,Lung,Ovary, |
| Function | catalytic activity:ATP + a protein = ADP + a phosphoprotein.,function:Displays serine/threonine-specific phosphorylation of myelin basic protein and histone (MBP) in vitro.,PTM:Phosphorylated on serine and/or threonine residues by ROCK1.,similarity:Belongs to the protein kinase superfamily. TKL Ser/Thr protein kinase family.,similarity:Contains 1 PDZ (DHR) domain.,similarity:Contains 1 protein kinase domain.,similarity:Contains 2 LIM zinc-binding domains.,subcellular location:Isoform LIMK2a is distributed in the cytoplasm and the nucleus.,subcellular location:Isoform LIMK2b occurs mainly in the cytoplasm and is scarcely translocated to the nucleus.,subunit:Binds ROCK1 and LKAP. |

Nanjing BYabscience technology Co.,Ltd



Interacts with PARD3. Interacts with NISCH.,tissue specificity: Highest expression in the placenta; moderate level in liver, lung, kidney, and pancreas. LIMK2a is found to be more abundant than LIMK2b in liver, col

Background

There are approximately 40 known eukaryotic LIM proteins, so named for the LIM domains they contain. LIM domains are highly conserved cysteine-rich structures containing 2 zinc fingers. Although zinc fingers usually function by binding to DNA or RNA, the LIM motif probably mediates protein-protein interactions. LIM kinase-1 and LIM kinase-2 belong to a small subfamily with a unique combination of 2 N-terminal LIM motifs and a C-terminal protein kinase domain. The protein encoded by this gene is phosphorylated and activated by ROCK, a downstream effector of Rho, and the encoded protein, in turn, phosphorylates cofilin, inhibiting its actin-depolymerizing activity. It is thought that this pathway contributes to Rho-induced reorganization of the actin cytoskeleton. At least three transcript variants encoding different isoforms have been found for this gene. [provided by RefSeq, Jul 2008],

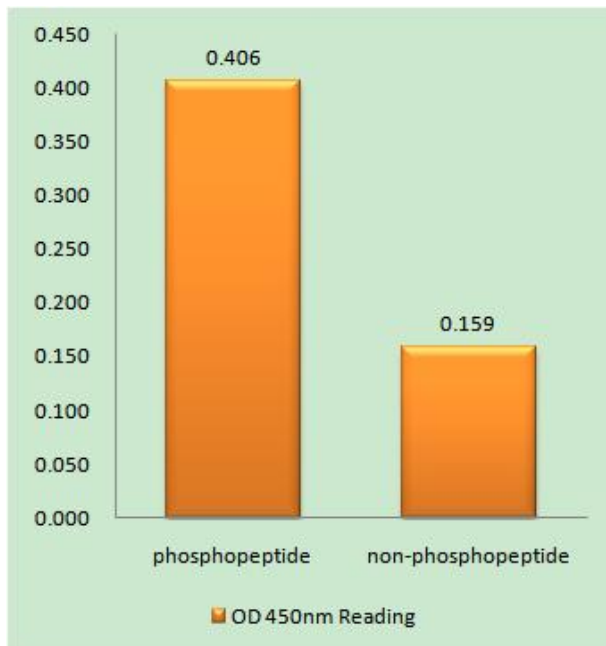
matters needing attention

Avoid repeated freezing and thawing!

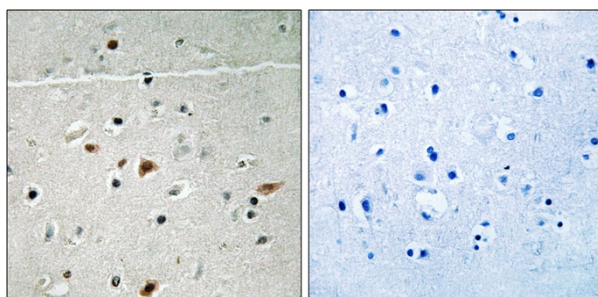
Usage suggestions

This product can be used in immunological reaction related experiments. For more information, please consult technical personnel.

Products Images

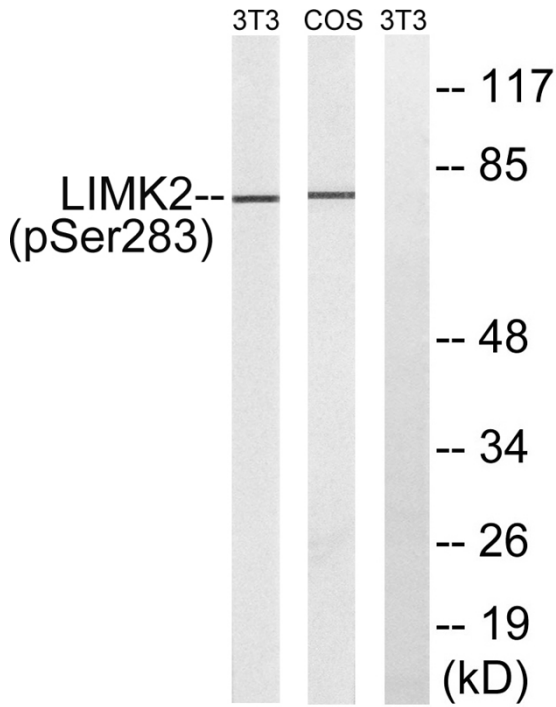


Enzyme-Linked Immunosorbent Assay (Phospho-ELISA) for Immunogen Phosphopeptide (Phospho-left) and Non-Phosphopeptide (Phospho-right), using LIMK2 (Phospho-Ser283) Antibody



Immunohistochemistry analysis of paraffin-embedded human brain, using LIMK2 (Phospho-Ser283) Antibody. The picture on the right is blocked with the phospho peptide.

Nanjing BYabscience technology Co.,Ltd



Western blot analysis of LIMK2 (Phospho-Ser283) Antibody. The lane on the right is blocked with the LIMK2 (Phospho-Ser283) peptide.