



PP2A-C α (phospho Tyr307) Polyclonal Antibody

Catalog No	BYab-14515
Isotype	IgG
Reactivity	Human;Mouse;Rat
Applications	WB;IP;IHC;IF;ELISA
Gene Name	PPP2CA
Protein Name	Serine/threonine-protein phosphatase 2A catalytic subunit alpha isoform
Immunogen	The antiserum was produced against synthesized peptide derived from human PP2A-alpha around the phosphorylation site of Tyr307. AA range:260-309
Specificity	Phospho-PP2A-C α (Y307) Polyclonal Antibody detects endogenous levels of PP2A-C α protein only when phosphorylated at Y307.
Formulation	Liquid in PBS containing 50% glycerol, 0.5% BSA and 0.02% sodium azide.
Source	Polyclonal, Rabbit,IgG
Purification	The antibody was affinity-purified from rabbit antiserum by affinity-chromatography using epitope-specific immunogen.
Dilution	Western Blot: 1/500 - 1/2000. Immunohistochemistry: 1/100 - 1/300. Immunofluorescence: 1/200 - 1/1000. ELISA: 1/5000. Not yet tested in other applications.
Concentration	1 mg/ml
Purity	≥90%
Storage Stability	-20°C/1 year
Synonyms	PPP2CA; Serine/threonine-protein phosphatase 2A catalytic subunit alpha isoform; PP2A-alpha; Replication protein C; RP-C
Observed Band	35kD
Cell Pathway	Cytoplasm . Nucleus . Chromosome, centromere . Cytoplasm, cytoskeleton, spindle pole . In prometaphase cells, but not in anaphase cells, localizes at centromeres (PubMed:16541025). During mitosis, also found at spindle poles (PubMed:16541025). Centromeric localization requires the presence of SGO2 (By similarity). .
Tissue Specificity	Fibroblast,Liver,Lung,Placenta,Testis,Uterus,
Function	catalytic activity:A phosphoprotein + H(2)O = a protein + phosphate.,cofactor:binds 1 iron ion per subunit.,cofactor:binds 1 manganese ion per subunit.,function:PP2A can modulate the activity of phosphorylase B kinase casein kinase 2, mitogen-stimulated S6 kinase, and MAP-2 kinase. Can dephosphorylate SV40 large T antigen and p53. Dephosphorylates SV40 large T antigen, preferentially on serine residues 120, 123, 677, and perhaps 679. The C

Nanjing BYabscience technology Co.,Ltd



subunit was most active, followed by the AC form, which was more active than the ABC form, and activity of all three forms was strongly stimulated by manganese, and to a lesser extent by magnesium. Dephosphorylation by the AC form, but not C or ABC form is inhibited by small T antigen.,PTM:Phosphorylation of either threonine (by autophosphorylation-activated protein kinase) or tyrosine results in inactivation of the phosphatase. Auto-dephosphorylation

Background

This gene encodes the phosphatase 2A catalytic subunit. Protein phosphatase 2A is one of the four major Ser/Thr phosphatases, and it is implicated in the negative control of cell growth and division. It consists of a common heteromeric core enzyme, which is composed of a catalytic subunit and a constant regulatory subunit, that associates with a variety of regulatory subunits. This gene encodes an alpha isoform of the catalytic subunit. [provided by RefSeq, Jul 2008],

matters needing attention

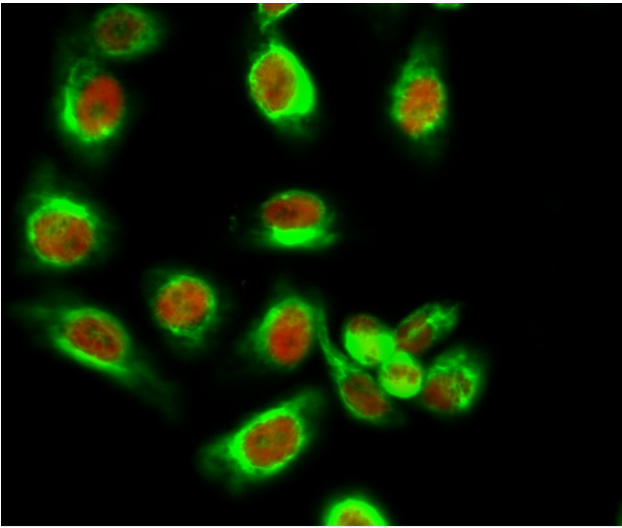
Avoid repeated freezing and thawing!

Usage suggestions

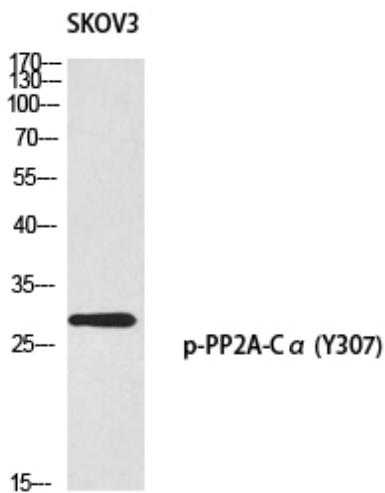
This product can be used in immunological reaction related experiments. For more information, please consult technical personnel.



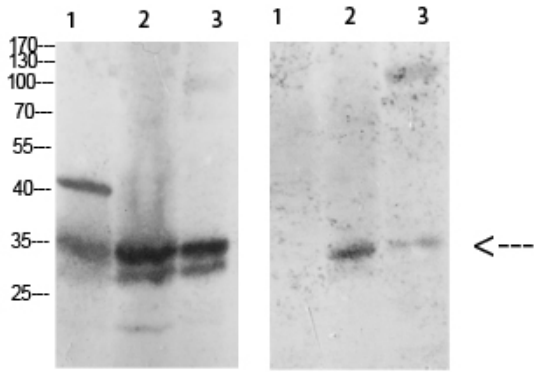
Products Images



Immunofluorescence analysis of HeLa cell. 1, PP2A-C α (phospho Tyr307) Polyclonal Antibody (red) was diluted at 1:200 (4 $^{\circ}$ overnight). HSP70 Monoclonal Antibody (3G10) (green) was diluted at 1:200 (4 $^{\circ}$ overnight). 2, Goat Anti Rabbit Alexa Fluor 594 Catalog: RS3611 was diluted at 1:1000 (room temperature, 50min). Goat Anti Mouse Alexa Fluor 488 Catalog: RS3208 was diluted at 1:1000 (room temperature, 50min).

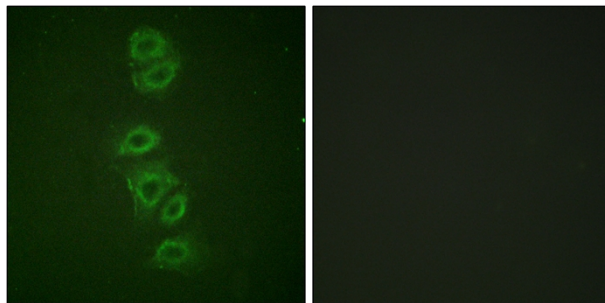


Western blot analysis of SKOV3 using p-PP2A-C α (Y307) antibody. Antibody was diluted at 1:1000

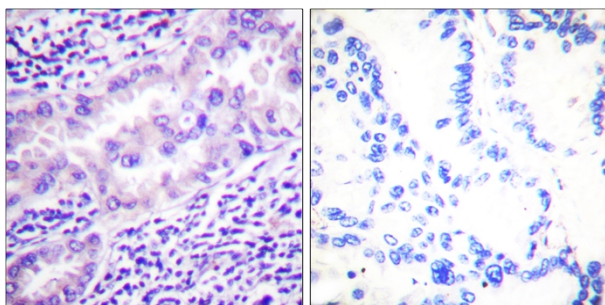


Western Blot analysis of various cells using Antibody diluted at 1:1000. Secondary antibody(catalog#:RS0002) was diluted at 1:20000

15-- PP2A-C α PP2A-C α p-Tyr307
1 mouse-kidney
2 Hela-UV
3 Hela



Immunofluorescence analysis of A549 cells, using PP2A-alpha (Phospho-Tyr307) Antibody. The picture on the right is blocked with the phospho peptide.



Immunohistochemistry analysis of paraffin-embedded human lung carcinoma, using PP2A-alpha (Phospho-Tyr307) Antibody. The picture on the right is blocked with the phospho peptide.