



p70 S6 kinase β (phospho Ser423) Polyclonal Antibody

Catalog No	BYab-14396
Isotype	IgG
Reactivity	Human;Mouse
Applications	WB;ELISA
Gene Name	RPS6KB2
Protein Name	Ribosomal protein S6 kinase beta-2
Immunogen	The antiserum was produced against synthesized peptide derived from human p70 S6 Kinase beta around the phosphorylation site of Ser423. AA range:389-438
Specificity	Phospho-p70 S6 kinase β (S423) Polyclonal Antibody detects endogenous levels of p70 S6 kinase β protein only when phosphorylated at S423.
Formulation	Liquid in PBS containing 50% glycerol, 0.5% BSA and 0.02% sodium azide.
Source	Polyclonal, Rabbit,IgG
Purification	The antibody was affinity-purified from rabbit antiserum by affinity-chromatography using epitope-specific immunogen.
Dilution	Western Blot: 1/500 - 1/2000. ELISA: 1/5000. Not yet tested in other applications.
Concentration	1 mg/ml
Purity	$\geq 90\%$
Storage Stability	-20°C/1 year
Synonyms	RPS6KB2; STK14B; Ribosomal protein S6 kinase beta-2; S6K-beta-2; S6K2; 70 kDa ribosomal protein S6 kinase 2; P70S6K2; p70-S6K 2; S6 kinase-related kinase; SRK; Serine/threonine-protein kinase 14B; p70 ribosomal S6 kinase beta; S6K-beta; p70
Observed Band	53kD
Cell Pathway	Cytoplasm. Nucleus.
Tissue Specificity	Brain,Epithelium,Lymph,
Function	catalytic activity:ATP + a protein = ADP + a phosphoprotein.,function:Phosphorylates specifically ribosomal protein S6.,PTM:Phosphorylated upon DNA damage, probably by ATM or ATR.,similarity:Belongs to the protein kinase superfamily.,similarity:Belongs to the protein kinase superfamily. AGC Ser/Thr protein kinase family. S6 kinase

Nanjing BYabscience technology Co.,Ltd



subfamily.,similarity:Contains 1 AGC-kinase C-terminal domain.,similarity:Contains 1 protein kinase domain.,

Background

ribosomal protein S6 kinase B2(RPS6KB2) Homo sapiens This gene encodes a member of the RSK (ribosomal S6 kinase) family of serine/threonine kinases. This kinase contains a kinase catalytic domain and phosphorylates the S6 ribosomal protein and eukaryotic translation initiation factor 4B (eIF4B). Phosphorylation of S6 leads to an increase in protein synthesis and cell proliferation. [provided by RefSeq, Jan 2015],

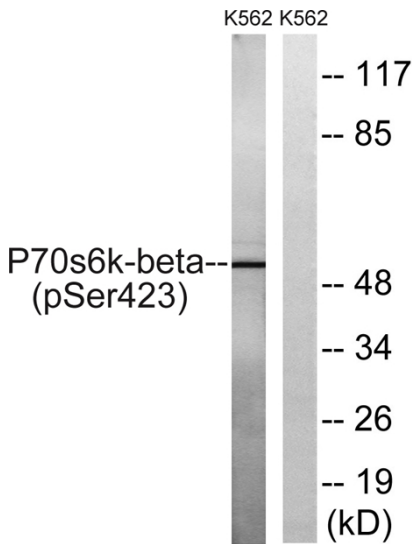
matters needing attention

Avoid repeated freezing and thawing!

Usage suggestions

This product can be used in immunological reaction related experiments. For more information, please consult technical personnel.

Products Images



Western blot analysis of lysates from K562 cells treated with EGF 200ng/ml 5', using p70 S6 Kinase beta (Phospho-Ser423) Antibody. The lane on the right is blocked with the phospho peptide.