



Wee1 (phospho Ser642) Polyclonal Antibody

Catalog No	BYab-14384
Isotype	IgG
Reactivity	Human;Mouse;Rat
Applications	WB;ELISA
Gene Name	WEE1
Protein Name	Wee1-like protein kinase
Immunogen	The antiserum was produced against synthesized peptide derived from human WEE1 around the phosphorylation site of Ser642. AA range:597-646
Specificity	Phospho-Wee1 (S642) Polyclonal Antibody detects endogenous levels of Wee1 protein only when phosphorylated at S642.
Formulation	Liquid in PBS containing 50% glycerol, 0.5% BSA and 0.02% sodium azide.
Source	Polyclonal, Rabbit,IgG
Purification	The antibody was affinity-purified from rabbit antiserum by affinity-chromatography using epitope-specific immunogen.
Dilution	Western Blot: 1/500 - 1/2000. ELISA: 1/5000. Not yet tested in other applications.
Concentration	1 mg/ml
Purity	≥90%
Storage Stability	-20°C/1 year
Synonyms	WEE1; Wee1-like protein kinase; WEE1hu; Wee1A kinase
Observed Band	100kD
Cell Pathway	Nucleus.
Tissue Specificity	Amygdala,Blood,Epithelium,Human uterus endothel primary cell culture,Placenta,Skin,
Function	catalytic activity:ATP + a [protein]-L-tyrosine = ADP + a [protein]-L-tyrosine phosphate.,cofactor:Binds 2 magnesium ions per subunit.,enzyme regulation:Synthesis is increased during S and G2 phases, presumably by an increase in transcription; activity is decreased by phosphorylation during m phase. Protein levels fall in M phase as a result of decreased synthesis combined with degradation. Activity seems to be negatively regulated by phosphorylation upon entry into mitosis, although N-terminal phosphorylation might also regulate the protein stability via protection from proteolysis or might regulate the subcellular location.,function:May act as a negative regulator of entry into mitosis (G2 to M transition) by protecting the nucleus from cytoplasmically activated cyclin B1-complexed CDC2 before the onset of mitosis. Its activity increases during S

Nanjing BYabscience technology Co.,Ltd



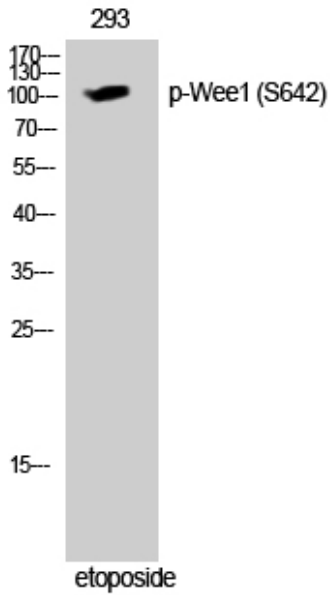
and G2 phases and decreases at M phase

Background	WEE1 G2 checkpoint kinase(WEE1) Homo sapiens This gene encodes a nuclear protein, which is a tyrosine kinase belonging to the Ser/Thr family of protein kinases. This protein catalyzes the inhibitory tyrosine phosphorylation of CDC2/cyclin B kinase, and appears to coordinate the transition between DNA replication and mitosis by protecting the nucleus from cytoplasmically activated CDC2 kinase. [provided by RefSeq, Jul 2008],
matters needing attention	Avoid repeated freezing and thawing!
Usage suggestions	This product can be used in immunological reaction related experiments. For more information, please consult technical personnel.

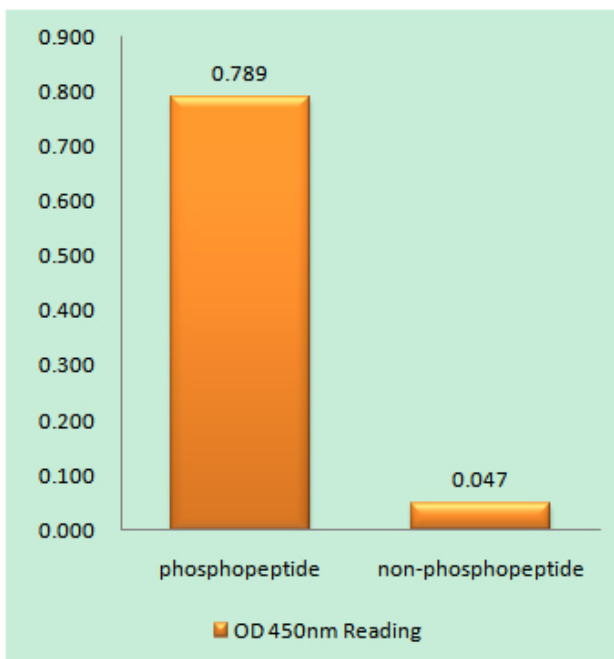
Nanjing BYabscience technology Co.,Ltd



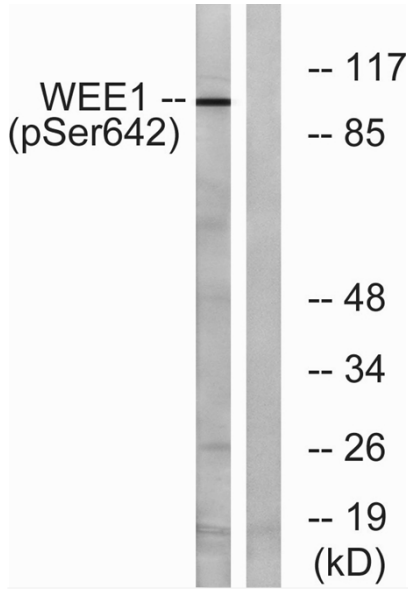
Products Images



Western Blot analysis of 293 cells using Phospho-Wee1 (S642) Polyclonal Antibody cells nucleus extracted by Minute TM Cytoplasmic and Nuclear Fractionation kit (SC-003, Inventibiotech, MN, USA).



Enzyme-Linked Immunosorbent Assay (Phospho-ELISA) for Immunogen Phosphopeptide (Phospho-left) and Non-Phosphopeptide (Phospho-right), using WEE1 (Phospho-Ser642) Antibody



Western blot analysis of lysates from 293 cells treated with etoposide 25uM 60', using WEE1 (Phospho-Ser642) Antibody. The lane on the right is blocked with the phospho peptide.