



# LC3B Polyclonal Antibody

<b>Catalog No</b>	BYab-14278
<b>Isotype</b>	IgG
<b>Reactivity</b>	Human;Mouse;Rat
<b>Applications</b>	WB;IF;IHC
<b>Gene Name</b>	MAP1LC3B
<b>Protein Name</b>	Microtubule-associated proteins 1A/1B light chain 3B
<b>Immunogen</b>	Recombinant Protein of MAP LC3 $\beta$
<b>Specificity</b>	The antibody detects endogenous MAP LC3 $\beta$ protein.
<b>Formulation</b>	PBS, pH 7.4, containing 0.5%BSA, 0.02% sodium azide as Preservative and 50% Glycerol.
<b>Source</b>	Polyclonal, Rabbit,IgG
<b>Purification</b>	The antibody was affinity-purified from rabbit antiserum by affinity-chromatography using epitope-specific immunogen.
<b>Dilution</b>	WB: 1:1000-2000 IHC: 1:200-500 IF 1:200
<b>Concentration</b>	1 mg/ml
<b>Purity</b>	$\geq 90\%$
<b>Storage Stability</b>	-20°C/1 year
<b>Synonyms</b>	MAP1LC3B; MAP1ALC3; Microtubule-associated proteins 1A/1B light chain 3B; Autophagy-related protein LC3 B; Autophagy-related ubiquitin-like modifier LC3 B; MAP1 light chain 3-like protein 2; MAP1A/MAP1B light chain 3 B; MAP1A/MAP1B LC3 B; Microtubule-associated protein 1 light chain 3 beta
<b>Observed Band</b>	14,16kD
<b>Cell Pathway</b>	Cytoplasmic vesicle, autophagosome membrane ; Lipid-anchor . Endomembrane system ; Lipid-anchor . Mitochondrion membrane ; Lipid-anchor . Cytoplasm, cytoskeleton . Cytoplasmic vesicle . LC3-II binds to the autophagic membranes. LC3-II localizes with the mitochondrial inner membrane during Parkin-mediated mitophagy (PubMed:28017329). Localizes also to discrete punctae along the ciliary axoneme. .
<b>Tissue Specificity</b>	Most abundant in heart, brain, skeletal muscle and testis. Little expression observed in liver.
<b>Function</b>	caution:PubMed:12740394 has shown that the protein is cleaved at Lys-122 but PubMed:15355958 has shown that the cleavage site is at Gly-120 as in other mammalian orthologs.,function:Probably involved in formation of autophagosomal

Nanjing BYabscience technology Co.,Ltd



vacuoles (autophagosomes).,PTM:The precursor molecule is cleaved by APG4B/ATG4B to form LC3-I. This is activated by APG7L/ATG7, transferred to ATG3 and conjugated to phospholipid to form LC3-II.,similarity:Belongs to the MAP1 LC3 family.,subcellular location:LC3-II binds to the autophagic membranes.,subunit:3 different light chains, LC1, LC2 and LC3, can associate with MAP1A and MAP1B proteins.,tissue specificity:Most abundant in heart, brain, skeletal muscle and testis. Little expression observed in liver.,

### Background

The product of this gene is a subunit of neuronal microtubule-associated MAP1A and MAP1B proteins, which are involved in microtubule assembly and important for neurogenesis. Studies on the rat homolog implicate a role for this gene in autophagy, a process that involves the bulk degradation of cytoplasmic component. [provided by RefSeq, Jul 2008],

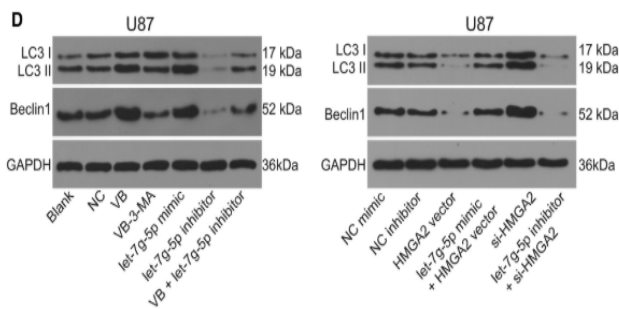
### matters needing attention

Avoid repeated freezing and thawing!

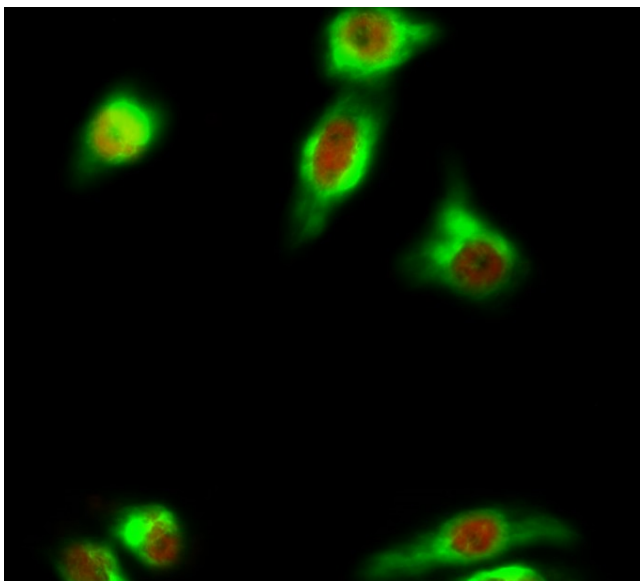
### Usage suggestions

This product can be used in immunological reaction related experiments. For more information, please consult technical personnel.

## Products Images

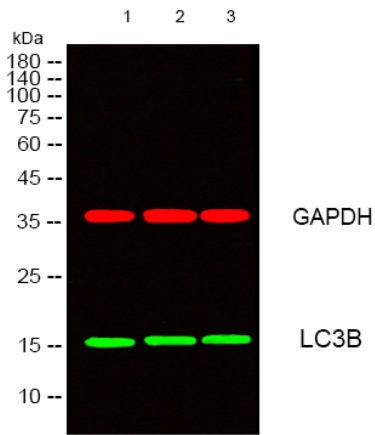


Jia, Wei-Qiang, et al. "Verbascoide inhibits progression of glioblastoma cells by promoting Let-7g-5p and down-regulating HMGA2 via Wnt/beta-catenin signalling blockade." *Journal of cellular and molecular medicine* 24.5 (2020): 2901-2916.

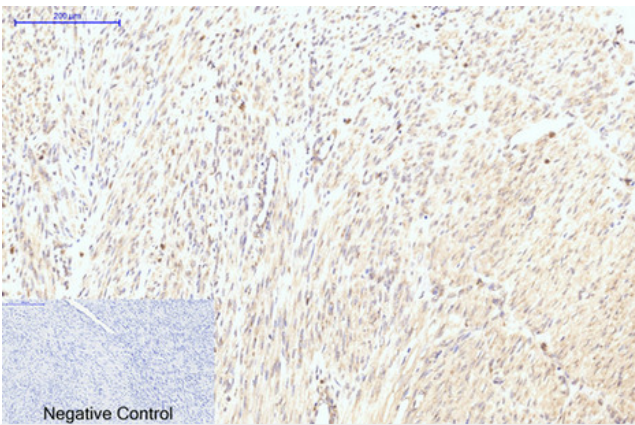


Immunofluorescence analysis of HeLa cell.  
1, Cleaved-PARP-1 (D214) Polyclonal Antibody (red) was diluted at 1:200 (4° overnight). LC3B Polyclonal Antibody (green) was diluted at 1:200 (4° overnight).  
2, Goat Anti Rabbit Alexa Fluor 594 Catalog: RS3611 was diluted at 1:1000 (room temperature, 50min). Goat Anti Mouse Alexa Fluor 488 Catalog: RS3208 was diluted at 1:1000 (room temperature, 50min).

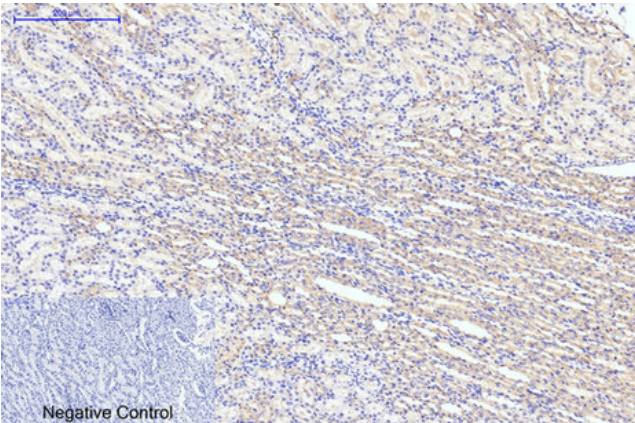
Nanjing BYabscience technology Co.,Ltd



Western blot analysis of lysates from 1) HeLa, 2) 3T3, 3) Rat Brain Tissue cells, (Green) primary antibody was diluted at 1:1000, 4° over night, secondary antibody(cat:RS23920)was diluted at 1:10000, 37° 1hour. (Red) GAPDH Monoclonal Antibody(2B8) (cat:YM3029) antibody was diluted at 1:5000 as loading control, 4° over night,secondary antibody(cat:RS23710)was diluted at 1:10000, 37° 1hour.



Immunohistochemical analysis of paraffin-embedded Human-uterus-cancer tissue. 1,LC3B Polyclonal Antibody was diluted at 1:200(4°C,overnight). 2, Sodium citrate pH 6.0 was used for antibody retrieval(>98°C,20min). 3,Secondary antibody was diluted at 1:200(room temperature, 30min). Negative control was used by secondary antibody only.



Immunohistochemical analysis of paraffin-embedded Rat-kidney tissue. 1,LC3B Polyclonal Antibody was diluted at 1:200(4°C,overnight). 2, Sodium citrate pH 6.0 was used for antibody retrieval(>98°C,20min). 3,Secondary antibody was diluted at 1:200(room temperature, 30min). Negative control was used by secondary antibody only.