



p90RSK mouse mAb

Catalog No	BYab-14235
Isotype	IgG
Reactivity	Human;Mouse;Monkey
Applications	WB;IP
Gene Name	rps6ka1
Protein Name	
Immunogen	Purified recombinant human p90RSK protein fragments expressed in E.coli.
Specificity	This antibody detects endogenous levels of p90RSK and does not cross-react with related proteins.
Formulation	Liquid in PBS containing 50% glycerol, 0.5% BSA and 0.02% sodium azide.
Source	Monoclonal, Mouse
Purification	The antibody was affinity-purified from mouse ascites by affinity-chromatography using epitope-specific immunogen.
Dilution	wb dilution 1:1000
Concentration	1 mg/ml
Purity	≥90%
Storage Stability	-20°C/1 year
Synonyms	90 kDa ribosomal protein S6 kinase 1;dJ590P13.1 (ribosomal protein S6 kinase, 90kD, polypeptide 1;dJ590P13.1;EC 2.7.11.1;HU 1;HU1;KS6A1_HUMAN;MAP kinase activated protein kinase 1a;MAP kinase-activated protein kinase 1a;MAPK-activated protein kinase 1a;MAPKAP kinase 1a;MAPKAPK-1a;MAPKAPK1A;MGC79981;Mitogen-activated protein kinase-activated protein kinase 1A;OTTHUMP000000041113;p90 RSK1;p90-RSK 1;p90rsk;p90RSK1;p90S6K;pp90RSK1;Ribosomal protein S6 kinase 90kD 1;Ribosomal protein S6 kinase 90kD polypeptide 1;Ribosomal protein S6 kinase 90kDa polypeptide 1;Ribosomal protein S6 kinase alpha 1;Ribosomal protein S6 kinase alpha-1;Ribosomal protein S6 kinase polypeptide 1;Ribosomal S6 kinase 1;RPS6K1 alpha;rps6ka;Rps6ka1;RSK 1;RSK 1 p90;RSK;RSK-1;RSK1;S6K alpha 1;S6K-alpha-1.
Observed Band	90kD

Nanjing BYabscience technology Co.,Ltd

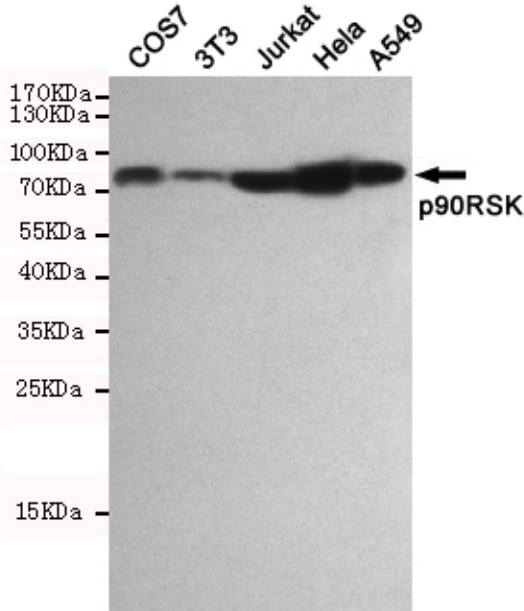


Cell Pathway	Nucleus. Cytoplasm.
Tissue Specificity	Colon,Epithelium,
Function	catalytic activity:ATP + a protein = ADP + a phosphoprotein.,caution:The sequence shown here is derived from an Ensembl automatic analysis pipeline and should be considered as preliminary data.,cofactor:Magnesium.,enzyme regulation:Activated by multiple phosphorylations on threonine and serine residues.,function:Serine/threonine kinase that may play a role in mediating the growth-factor and stress induced activation of the transcription factor CREB.,PTM:Autophosphorylated on Ser-380, as part of the activation process.,similarity:Belongs to the protein kinase superfamily.,similarity:Belongs to the protein kinase superfamily. AGC Ser/Thr protein kinase family. S6 kinase subfamily.,similarity:Contains 1 AGC-kinase C-terminal domain.,similarity:Contains 2 protein kinase domains.,subunit:Forms a complex with either ERK1 or ERK2 in quiescent cells. Transiently dissociates following mitogenic s
Background	ribosomal protein S6 kinase A1(RPS6KA1) Homo sapiens This gene encodes a member of the RSK (ribosomal S6 kinase) family of serine/threonine kinases. This kinase contains 2 nonidentical kinase catalytic domains and phosphorylates various substrates, including members of the mitogen-activated kinase (MAPK) signalling pathway. The activity of this protein has been implicated in controlling cell growth and differentiation. Alternate transcriptional splice variants, encoding different isoforms, have been characterized. [provided by RefSeq, Jul 2008],
matters needing attention	Avoid repeated freezing and thawing!
Usage suggestions	This product can be used in immunological reaction related experiments. For more information, please consult technical personnel.

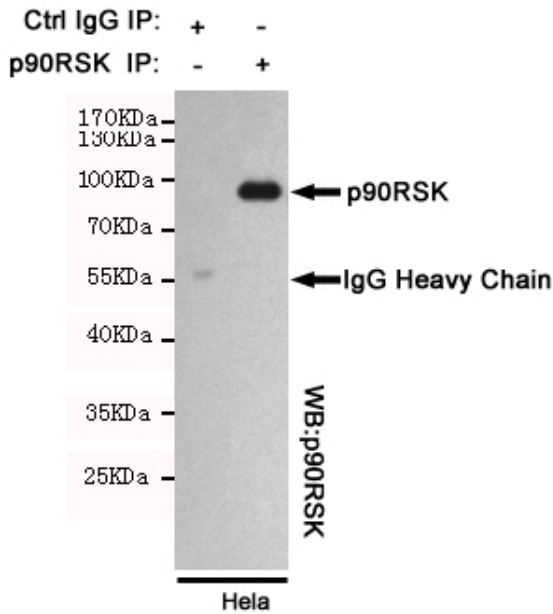
Nanjing BYabscience technology Co.,Ltd



Products Images



Western blot detection of p90RSK in COS7, 3T3, Jurkat, HeLa and A549 cell lysates using p90RSK mouse mAb (dilution 1:1000). Predicted band size: 90KDa. Observed band size: 90KDa.



Immunoprecipitation analysis of HeLa cell lysates using p90RSK mouse mAb.