



# Placental alkaline phosphatase (PLAP) mouse mAb

<b>Catalog No</b>	BYab-14230
<b>Isotype</b>	IgG
<b>Reactivity</b>	Human
<b>Applications</b>	WB
<b>Gene Name</b>	alpp
<b>Protein Name</b>	
<b>Immunogen</b>	Purified recombinant Placental alkaline phosphatase (PLAP) protein fragments expressed in E.coli.
<b>Specificity</b>	This antibody detects endogenous levels of Placental alkaline phosphatase (PLAP) and does not cross-react with related proteins.
<b>Formulation</b>	Liquid in PBS containing 50% glycerol, 0.5% BSA and 0.02% sodium azide.
<b>Source</b>	Monoclonal, Mouse
<b>Purification</b>	The antibody was affinity-purified from mouse ascites by affinity-chromatography using epitope-specific immunogen.
<b>Dilution</b>	wb 1:1000
<b>Concentration</b>	1 mg/ml
<b>Purity</b>	≥90%
<b>Storage Stability</b>	-20°C/1 year
<b>Synonyms</b>	Alkaline phosphatase; Alkaline phosphatase placental; Alkaline phosphatase placental type; Alkaline phosphatase Regan isozyme; ALP; Alp1; ALPP; FLJ61142; Germ-cell alkaline phosphatase; nagao isozyme; OTTHUMP00000164354; PALP; Placental alkaline phosphatase 1; placental heat-stable alkaline phosphatase; placental type; PLAP; PLAP-1; PLAP1; PPB1_HUMAN.
<b>Observed Band</b>	70kD
<b>Cell Pathway</b>	Cell membrane; Lipid-anchor, GPI-anchor .
<b>Tissue Specificity</b>	Detected in placenta (at protein level).
<b>Function</b>	catalytic activity:A phosphate monoester + H(2)O = an alcohol + phosphate.,cofactor:Binds 1 magnesium ion.,cofactor:Binds 2 zinc ions.,miscellaneous:In most mammals there are four different isozymes: placental, placental-like, intestinal and tissue non-specific

Nanjing BYabscience technology Co.,Ltd



(liver/bone/kidney).,online information:Alkaline phosphatase entry,polymorphism:Placental ALP is highly polymorphic, there are at least three common alleles.,similarity:Belongs to the alkaline phosphatase family.,subunit:Homodimer.,

### Background

The protein encoded by this gene is an alkaline phosphatase, a metalloenzyme that catalyzes the hydrolysis of phosphoric acid monoesters. It belongs to a multigene family composed of four alkaline phosphatase isoenzymes. The enzyme functions as a homodimer and has a catalytic site containing one magnesium and two zinc ions, which are required for its enzymatic function. The protein is primarily expressed in placental and endometrial tissue; however, strong ectopic expression has been detected in ovarian adenocarcinoma, serous cystadenocarcinoma, and other ovarian cancer cells. [provided by RefSeq, Jan 2015],

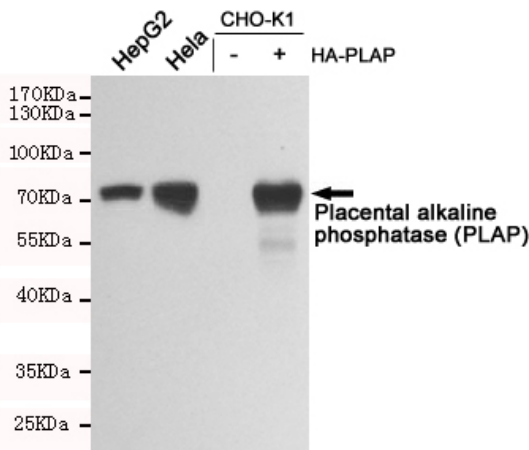
### matters needing attention

Avoid repeated freezing and thawing!

### Usage suggestions

This product can be used in immunological reaction related experiments. For more information, please consult technical personnel.

## Products Images



Western blot analysis of extracts from HepG2, HeLa, CHO-K1 and CHO-K1 transfected pcDNA3.1-HA-PLAP cell lysates using Placental alkaline phosphatase (PLAP) mouse mAb (1:1000 diluted). Predicted band size:70KDa.Observed band size:70KDa.

Nanjing BYabscience technology Co.,Ltd