



GRK2 mouse mAb

Catalog No	BYab-14217
Isotype	IgG
Reactivity	Human
Applications	WB
Gene Name	adrbk1
Protein Name	
Immunogen	Purified recombinant human GRK2 protein fragments expressed in E.coli.
Specificity	This antibody detects endogenous levels of GRK2 and does not cross-react with related proteins.
Formulation	Liquid in PBS containing 50% glycerol, 0.5% BSA and 0.02% sodium azide.
Source	Monoclonal, Mouse
Purification	The antibody was affinity-purified from mouse ascites by affinity-chromatography using epitope-specific immunogen.
Dilution	wb 1:500
Concentration	1 mg/ml
Purity	≥90%
Storage Stability	-20°C/1 year
Synonyms	ADRBK 1;ADRBK1;Adrenergic beta receptor kinase 1;Adrenergic beta receptor kinase 1; ARBK1_HUMAN;BARK 1;BARK;BARK1;Beta adrenergic receptor kinase 1;Beta ARK 1;Beta ARK1; Beta-adrenergic receptor kinase 1;Beta-ARK-1;FLJ16718;G Protein Coupled Receptor Kinase 2;G protein dependent receptor kinase 2;G-protein coupled receptor kinase 2;GRK 2;GRK2.
Observed Band	80kD
Cell Pathway	Cytoplasm . Cell membrane . Cell junction, synapse, postsynapse . Cell junction, synapse, presynapse .
Tissue Specificity	Expressed in peripheral blood leukocytes.
Function	catalytic activity:ATP + [beta-adrenergic receptor] = ADP + [beta-adrenergic receptor] phosphate.,catalytic activity:ATP + a protein = ADP + a phosphoprotein.,function:Specifically phosphorylates the agonist-occupied form of the beta-adrenergic and closely related receptors, probably inducing a desensitization of them.,online information:Beta adrenergic receptor kinase entry,similarity:Belongs to the protein kinase superfamily. AGC Ser/Thr protein

Nanjing BYabscience technology Co.,Ltd



kinase family. GPRK subfamily.,similarity:Contains 1 AGC-kinase C-terminal domain.,similarity:Contains 1 PH domain.,similarity:Contains 1 protein kinase domain.,similarity:Contains 1 RGS domain.,subunit:Interacts with GIT1 (By similarity). Interacts with, and phosphorylates chemokine-stimulated CCR5.,tissue specificity:Expressed in peripheral blood leukocytes.,

Background

The product of this gene phosphorylates the beta-2-adrenergic receptor and appears to mediate agonist-specific desensitization observed at high agonist concentrations. This protein is an ubiquitous cytosolic enzyme that specifically phosphorylates the activated form of the beta-adrenergic and related G-protein-coupled receptors. Abnormal coupling of beta-adrenergic receptor to G protein is involved in the pathogenesis of the failing heart. [provided by RefSeq, Jul 2008],

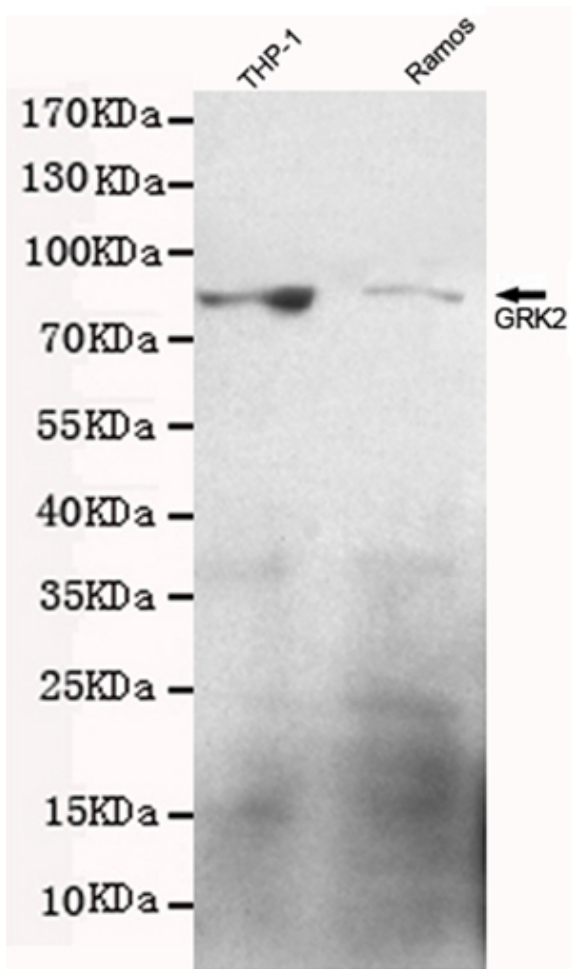
matters needing attention

Avoid repeated freezing and thawing!

Usage suggestions

This product can be used in immunological reaction related experiments. For more information, please consult technical personnel.

Products Images



Western blot detection of GRK2 in Ramos and THP-1 cell lysates using GRK2 mouse mAb (1:500 diluted),with super ECL.Predicted band size:80KDa.Observed band size:80KDa.Exposure time:20S.

Nanjing BYabscience technology Co.,Ltd