



Aurora Kinase A mouse mAb

Catalog No	BYab-14214
Isotype	IgG
Reactivity	Human;Monkey
Applications	WB;IF
Gene Name	aurka
Protein Name	
Immunogen	Purified recombinant human Aurora Kinase A protein fragments expressed in E.coli.
Specificity	This antibody detects endogenous levels of Aurora Kinase A and does not cross-react with related proteins.
Formulation	Liquid in PBS containing 50% glycerol, 0.5% BSA and 0.02% sodium azide.
Source	Monoclonal, Mouse
Purification	The antibody was affinity-purified from mouse ascites by affinity-chromatography using epitope-specific immunogen.
Dilution	wb 1:500 icc 1:50. IF 1:50-200
Concentration	1 mg/ml
Purity	≥90%
Storage Stability	-20°C/1 year
Synonyms	AIK;ARK-1;ARK1;AURA;AURKA;Aurora 2;Aurora A;Aurora Family Kinase 1;aurora kinase A;Aurora Related Kinase 1;Aurora-related kinase 1;Aurora/IPL1 Like Kinase; Aurora/IPL1 Related Kinase 1;Aurora/IPL1-related kinase 1;AURORA2;AYK1;BRAK;Breast Tumor Amplified Kinase;Breast tumor-amplified kinase;BTAK;hARK1;IAK;IPL1 Aurora Related Kinase 1;IPL1 Related Kinase;MGC34538;OTTHUMP00000031340;OTTHUMP00000031341;OTTHUMP00000031342;OTTHUMP00000031343;OTTHUMP00000031344;OTTHUMP00000031345;OTTHUMP00000166071;OTTHUMP00000166072;PP P1R47;Protein phosphatase 1, regulatory subunit 47;Serine/threonine kinase 15;Serine/threonine kinase 6;Serine/threonine kinase;Serine/threonine-protein kinase 15;Serine/threonine-protein kinase 6;Serine/threonine-protein kinase aurora-A;STK15;STK6; STK6_HUMAN;STK7.
Observed Band	46kD

Nanjing BYabscience technology Co.,Ltd

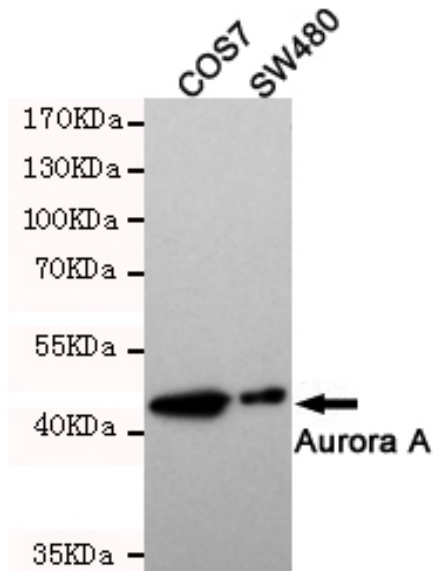


Cell Pathway	Cytoplasm, cytoskeleton, microtubule organizing center, centrosome . Cytoplasm, cytoskeleton, spindle pole . Cytoplasm, cytoskeleton, cilium basal body . Cytoplasm, cytoskeleton, microtubule organizing center, centrosome, centriole . Cell projection, neuron projection . Detected at the neurite hillock in developing neurons (By similarity). Localizes at the centrosome in mitotic cells from early prophase until telophase, but also localizes to the spindle pole MTs from prophase to anaphase (PubMed:9606188, PubMed:17229885, PubMed:21225229). Colocalized with SIRT2 at centrosome (PubMed:22014574). Moves to the midbody during both telophase and cytokinesis (PubMed:17726514). Associates with both the pericentriolar material (PCM) and centrioles (PubMed:22014574). The localization to the spindle
Tissue Specificity	Highly expressed in testis and weakly in skeletal muscle, thymus and spleen. Also highly expressed in colon, ovarian, prostate, neuroblastoma, breast and cervical cancer cell lines.
Function	catalytic activity:ATP + a protein = ADP + a phosphoprotein.,caution:Although authors have considered STK6 and STK15 as two different proteins, it is clear that they are the same protein.,disease:Defects in AURKA are responsible for numerical centrosome aberrations including aneuploidy.,function:May play a role in cell cycle regulation during anaphase and/or telophase, in relation to the function of the centrosome/spindle pole region during chromosome segregation. May be involved in microtubule formation and/or stabilization. Phosphorylates ARHGEF2 and BORA.,PTM:Phosphorylated upon DNA damage, probably by ATM or ATR.,similarity:Belongs to the protein kinase superfamily.,similarity:Belongs to the protein kinase superfamily. Ser/Thr protein kinase family. Aurora subfamily.,similarity:Contains 1 protein kinase domain.,subcellular location:Localizes on centrosomes in interphase cells and at
Background	The protein encoded by this gene is a cell cycle-regulated kinase that appears to be involved in microtubule formation and/or stabilization at the spindle pole during chromosome segregation. The encoded protein is found at the centrosome in interphase cells and at the spindle poles in mitosis. This gene may play a role in tumor development and progression. A processed pseudogene of this gene has been found on chromosome 1, and an unprocessed pseudogene has been found on chromosome 10. Multiple transcript variants encoding the same protein have been found for this gene. [provided by RefSeq, Jul 2008],
matters needing attention	Avoid repeated freezing and thawing!
Usage suggestions	This product can be used in immunological reaction related experiments. For more information, please consult technical personnel.

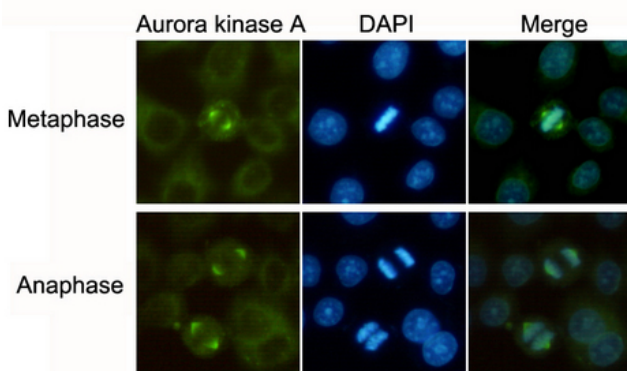
Nanjing BYabscience technology Co.,Ltd



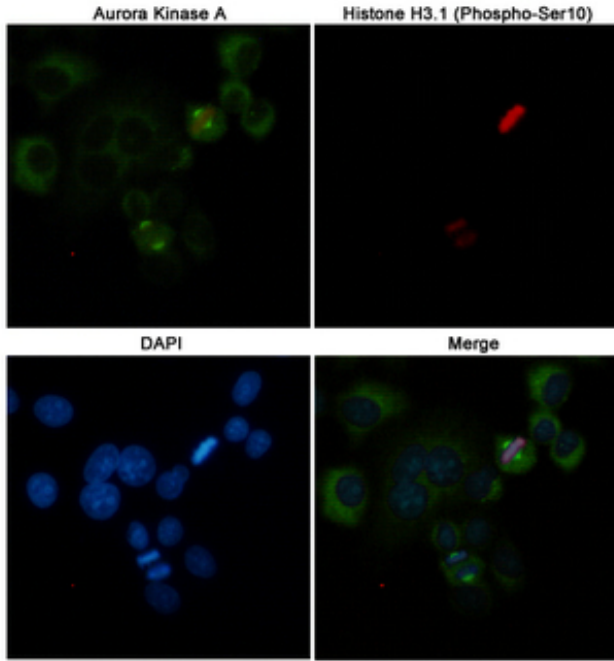
Products Images



Western blot detection of Aurora Kinase A in SW480 and COS7 cell lysates and using Aurora Kinase A mouse mAb (1:500 diluted). Predicted band size: 46KDa. Observed band size: 46KDa.



Immunocytochemistry staining of HeLa cells fixed with -20°C Methanol and using Aurora Kinase A mouse mAb (dilution 1:100).



Immunofluorescent analysis of HeLa cells labeled with Aurora Kinase A(200525,dilution 1:50) mouse mAb (green) and Histone H3.1 (Phospho-Ser10)(310045,dilution 1:100) Rabbit pAb (red). DAPI was used to stain nucleus(blue).