



Fucokinase Monoclonal Antibody

Catalog No	BYab-14147
Isotype	IgG
Reactivity	Human;Mouse;Rat;Monkey
Applications	WB;FCM;ELISA
Gene Name	FUK
Protein Name	L-fucose kinase
Immunogen	Purified recombinant fragment of human Fucokinase expressed in E. Coli.
Specificity	Fucokinase Monoclonal Antibody detects endogenous levels of Fucokinase protein.
Formulation	Ascitic fluid containing 0.03% sodium azide,0.5% BSA, 50%glycerol.
Source	Monoclonal, Mouse
Purification	Affinity purification
Dilution	Western Blot: 1/500 - 1/2000. Flow cytometry: 1/200 - 1/400. ELISA: 1/10000. Not yet tested in other applications.
Concentration	1 mg/ml
Purity	≥90%
Storage Stability	-20°C/1 year
Synonyms	FUK; L-fucose kinase; Fucokinase
Observed Band	
Cell Pathway	cytoplasm,cytosol,
Tissue Specificity	Expressed in fibroblasts.
Function	catalytic activity:ATP + L-fucose = ADP + beta-L-fucose 1-phosphate.,function:Takes part in the salvage pathway for reutilization of fucose from the degradation of oligosaccharides.,similarity:Belongs to the GHMP kinase family.,
Background	fucokinase(FUK) Homo sapiens The protein encoded by this gene belongs to the GHMP (galacto-, homoserine, mevalonate and phosphomevalonate) kinase family and catalyzes the phosphorylation of L-fucose to form beta-L-fucose 1-phosphate. This enzyme catalyzes the first step in the utilization of free L-fucose in glycoprotein and glycolipid synthesis. L-fucose may be important in mediating a number of cell-cell interactions such as blood group antigen recognition, inflammation, and metastasis. While several transcript variants may exist for this gene, the full-length nature of only one has been described to date. [provided by

Nanjing BYabscience technology Co.,Ltd



RefSeq, Jul 2008],

matters needing attention

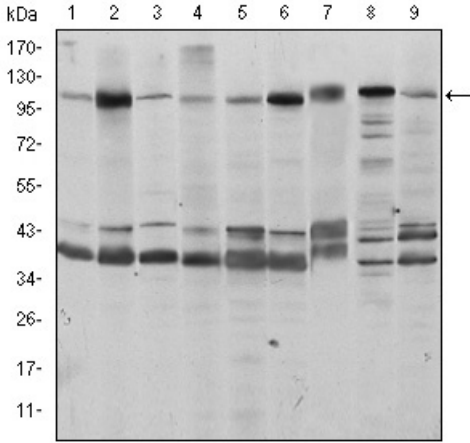
Avoid repeated freezing and thawing!

Usage suggestions

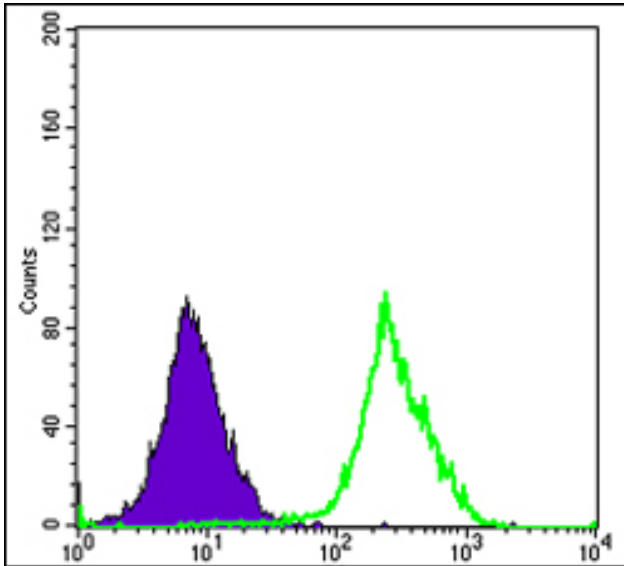
This product can be used in immunological reaction related experiments. For more information, please consult technical personnel.



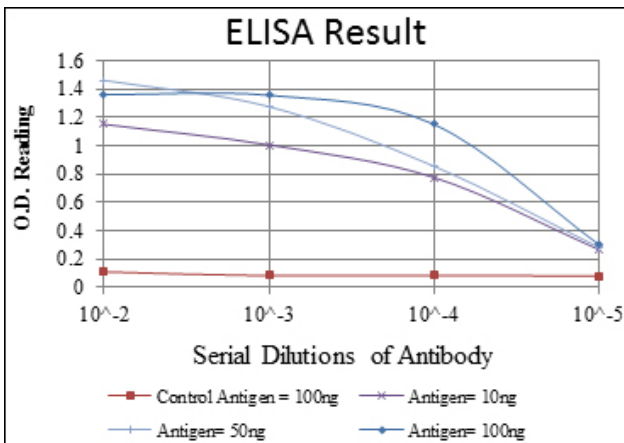
Products Images



Western Blot analysis using Fucokinase Monoclonal Antibody against HeLa (1), HepG2 (2), Jurkat (3), A431 (4), HEK293 (5), MCF-7 (6), PC-12 (7), Cos7 (8), and NIH/3T3 (9) cell lysate.



Flow cytometric analysis of HeLa cells using Fucokinase Monoclonal Antibody (green) and negative control (purple).



Nanjing BYabscience technology Co.,Ltd