



Bmx Monoclonal Antibody

Catalog No	BYab-14125
Isotype	IgG
Reactivity	Human
Applications	WB;ELISA
Gene Name	BMX
Protein Name	Cytoplasmic tyrosine-protein kinase BMX
Immunogen	Purified recombinant fragment of human Bmx expressed in E. Coli.
Specificity	Bmx Monoclonal Antibody detects endogenous levels of Bmx protein.
Formulation	Ascitic fluid containing 0.03% sodium azide,0.5% BSA, 50%glycerol.
Source	Monoclonal, Mouse
Purification	Affinity purification
Dilution	Western Blot: 1/500 - 1/2000. ELISA: 1/10000. Not yet tested in other applications.
Concentration	1 mg/ml
Purity	≥90%
Storage Stability	-20°C/1 year
Synonyms	BMX; Cytoplasmic tyrosine-protein kinase BMX; Bone marrow tyrosine kinase gene in chromosome X protein; Epithelial and endothelial tyrosine kinase; ETK; NTK38
Observed Band	
Cell Pathway	Cytoplasm . Localizes to the edges of spreading cells when complexed with BCAR1.
Tissue Specificity	Highly expressed in cells with great migratory potential, including endothelial cells and metastatic carcinoma cell lines.
Function	catalytic activity:ATP + a [protein]-L-tyrosine = ADP + a [protein]-L-tyrosine phosphate.,cofactor:Binds 1 zinc ion per subunit.,domain:SH2 domain mediates interaction with RUFY1.,function:Activity is required for interleukin 6 (IL-6) induced differentiation. May play a role in the growth and differentiation of hematopoietic cells. May be involved in signal transduction in endocardial and arterial endothelial cells.,induction:Activated by IL-6 through phosphatidylinositol 3-kinase (PI3-kinase) pathway. It is likely that activation occurs through binding of phosphoinositides to the PH domain.,similarity:Belongs to the protein kinase superfamily. Tyr protein kinase family. TEC subfamily.,similarity:Contains 1 Btk-type zinc finger.,similarity:Contains 1 PH domain.,similarity:Contains 1 protein

Nanjing BYabscience technology Co.,Ltd



kinase domain.,similarity:Contains 1 SH2 domain.,subunit:Interacts with RUFY1 and RUFY2.,tissue sp

Background

This gene encodes a non-receptor tyrosine kinase belonging to the Tec kinase family. The protein contains a PH-like domain, which mediates membrane targeting by binding to phosphatidylinositol 3,4,5-triphosphate (PIP3), and a SH2 domain that binds to tyrosine-phosphorylated proteins and functions in signal transduction. The protein is implicated in several signal transduction pathways including the Stat pathway, and regulates differentiation and tumorigenicity of several types of cancer cells. Alternatively spliced transcript variants have been found for this gene. [provided by RefSeq, Mar 2016],

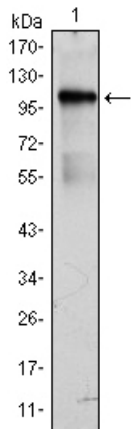
matters needing attention

Avoid repeated freezing and thawing!

Usage suggestions

This product can be used in immunological reaction related experiments. For more information, please consult technical personnel.

Products Images



Western Blot analysis using Bmx Monoclonal Antibody against BMX-hlgGfc transfected HEK293 cell lysate.