



CD80 Polyclonal Antibody

Catalog No	BYab-14104
Isotype	IgG
Reactivity	Human;Rat;Mouse;
Applications	IHC;IF;ELISA
Gene Name	CD80 CD28LG CD28LG1 LAB7
Protein Name	T-lymphocyte activation antigen CD80 (Activation B7-1 antigen) (BB1) (CTLA-4 counter-receptor B7.1) (B7) (CD antigen CD80)
Immunogen	Synthetic peptide from human protein at AA range: 100-160
Specificity	The antibody detects endogenous CD80
Formulation	Liquid in PBS containing 50% glycerol, 0.5% BSA and 0.02% sodium azide.
Source	Polyclonal, Rabbit,IgG
Purification	The antibody was affinity-purified from rabbit antiserum by affinity-chromatography using epitope-specific immunogen.
Dilution	IHC-p 1:50-200, ELISA 1:10000-20000. IF 1:50-200
Concentration	1 mg/ml
Purity	≥90%
Storage Stability	-20°C/1 year
Synonyms	T-lymphocyte activation antigen CD80 (Activation B7-1 antigen;BB1;CTLA-4 counter-receptor B7.1;B7;CD antigen CD80)
Observed Band	
Cell Pathway	Membrane; Single-pass type I membrane protein.
Tissue Specificity	Expressed on activated B-cells, macrophages and dendritic cells.
Function	function:Involved in the costimulatory signal essential for T-lymphocyte activation. T-cell proliferation and cytokine production is induced by the binding of CD28 or CTLA-4 to this receptor.,similarity:Contains 1 Ig-like C2-type (immunoglobulin-like) domain.,similarity:Contains 1 Ig-like V-type (immunoglobulin-like) domain.,subunit:Interacts with adenovirus subgroup B fiber proteins and acts as a receptor for these viruses.,tissue specificity:Expressed on activated B-cells, macrophages and dendritic cells.,
Background	The protein encoded by this gene is a membrane receptor that is activated by the binding of CD28 or CTLA-4. The activated protein induces T-cell proliferation and cytokine production. This protein can act as a receptor for adenovirus subgroup B

Nanjing BYabscience technology Co.,Ltd



and may play a role in lupus neuropathy. [provided by RefSeq, Aug 2011],

matters needing attention

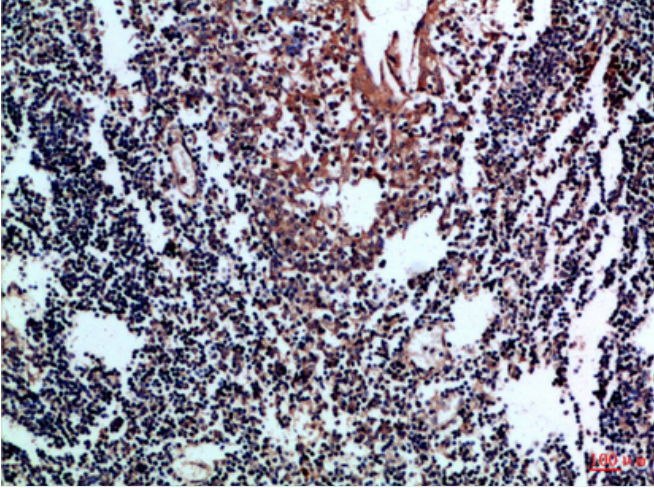
Avoid repeated freezing and thawing!

Usage suggestions

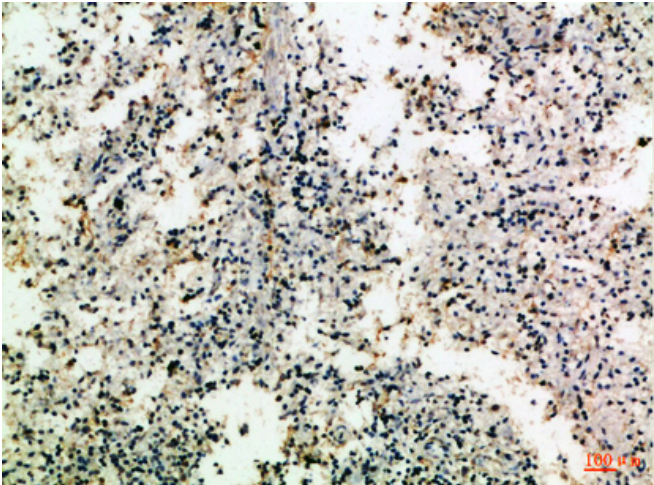
This product can be used in immunological reaction related experiments. For more information, please consult technical personnel.



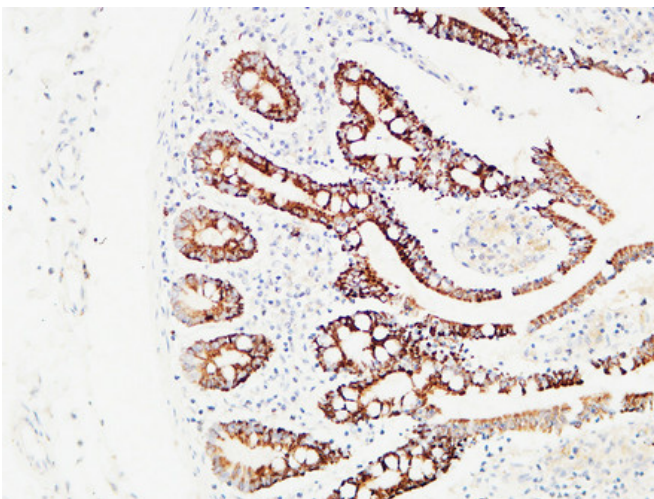
Products Images



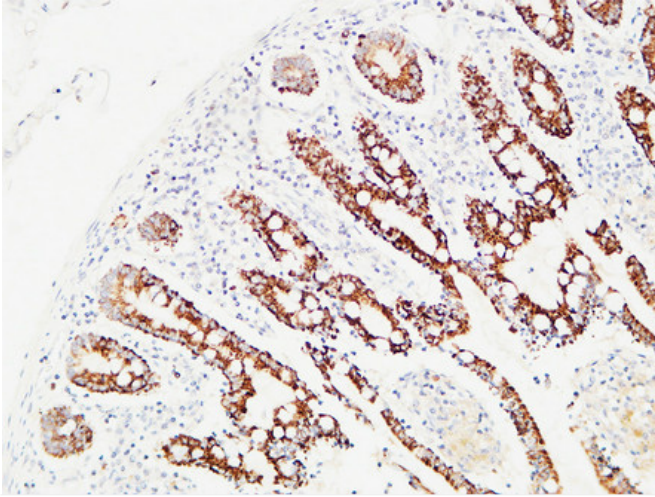
Immunohistochemical analysis of paraffin-embedded Human-tonsil, antibody was diluted at 1:100



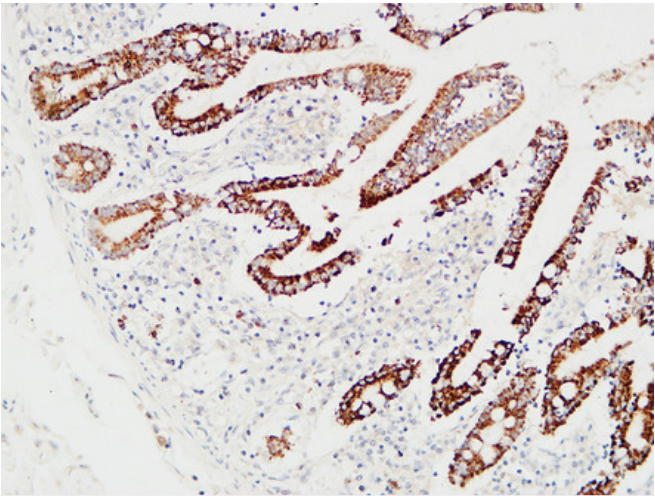
Immunohistochemical analysis of paraffin-embedded Human-spleen, antibody was diluted at 1:100



Immunohistochemical analysis of paraffin-embedded Human colon. 1, Antibody was diluted at 1:400(4° overnight). 2, High-pressure and temperature EDTA, pH8.0 was used for antigen retrieval. 3, Secondary antibody was diluted at 1:200(room temperature, 30min).



Immunohistochemical analysis of paraffin-embedded Human colon. 1, Antibody was diluted at 1:400(4° overnight). 2, High-pressure and temperature EDTA, pH8.0 was used for antigen retrieval. 3, Secondary antibody was diluted at 1:200(room temperature, 30min).



Immunohistochemical analysis of paraffin-embedded Human colon. 1, Antibody was diluted at 1:400(4° overnight). 2, High-pressure and temperature EDTA, pH8.0 was used for antigen retrieval. 3, Secondary antibody was diluted at 1:200(room temperature, 30min).