



# Dectin-2 Polyclonal Antibody

<b>Catalog No</b>	BYab-14087
<b>Isotype</b>	IgG
<b>Reactivity</b>	Human;Rat;Mouse;
<b>Applications</b>	WB;IHC;IF;ELISA
<b>Gene Name</b>	CLEC6A
<b>Protein Name</b>	C-type lectin domain family 6 member A
<b>Immunogen</b>	Synthesized peptide derived from the Internal region of human Dectin-2.
<b>Specificity</b>	Dectin-2 Polyclonal Antibody detects endogenous levels of Dectin-2 protein.
<b>Formulation</b>	Liquid in PBS containing 50% glycerol, 0.5% BSA and 0.02% sodium azide.
<b>Source</b>	Polyclonal, Rabbit,IgG
<b>Purification</b>	The antibody was affinity-purified from rabbit antiserum by affinity-chromatography using epitope-specific immunogen.
<b>Dilution</b>	WB: 1/500 - 1/2000. IHC-p: 1:100-1:300. ELISA: 1/10000.. IF 1:50-200
<b>Concentration</b>	1 mg/ml
<b>Purity</b>	≥90%
<b>Storage Stability</b>	-20°C/1 year
<b>Synonyms</b>	CLEC6A; CLECSF10; DECTIN2; C-type lectin domain family 6 member A; C-type lectin superfamily member 10; Dendritic cell-associated C-type lectin 2; DC-associated C-type lectin 2; Dectin-2
<b>Observed Band</b>	23kD
<b>Cell Pathway</b>	Cell membrane ; Single-pass type II membrane protein .
<b>Tissue Specificity</b>	Expressed in lung, spleen, lymph node, leukocytes, bone marrow, tonsils and dendritic cells. Strongly expressed in purified monocytes and weakly in B-cells. In peripheral blood cells, preferentially expressed in plasmacytoids rather than myeloids.
<b>Function</b>	function:May be involved in regulating immune reactivity.,similarity:Contains 1 C-type lectin domain.,tissue specificity:Expressed in dendritic cells.,
<b>Background</b>	The protein encoded by this gene is a type II membrane receptor with an extracellular C-type lectin-like domain fold. The extracellular portion binds structures with a high mannose content and has been shown to recognize several pathogens, including <i>C. elegans</i> , <i>S. cerevisiae</i> , <i>M. tuberculosis</i> , <i>C. neoformans</i> , and house dust mite. When stimulated, the encoded protein initiates signalling

Nanjing BYabscience technology Co.,Ltd



through the CARD9-Bcl10-Malt1 pathway, leading to the induction of cytokines. Two transcript variants encoding different isoforms have been found for this gene. [provided by RefSeq, Dec 2015],

**matters needing attention**

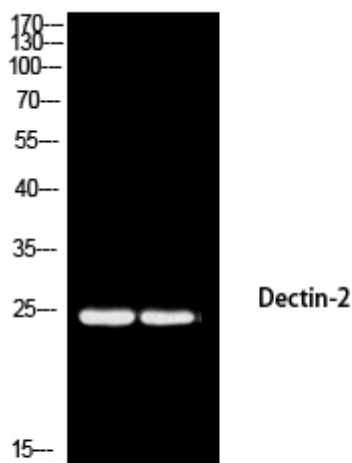
Avoid repeated freezing and thawing!

**Usage suggestions**

This product can be used in immunological reaction related experiments. For more information, please consult technical personnel.

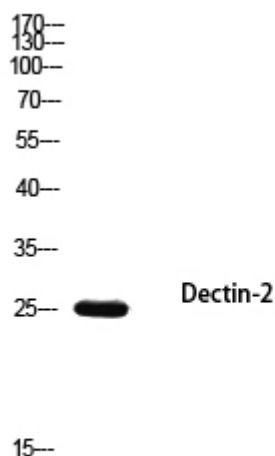
**Products Images**

SH-SY5Y 293T

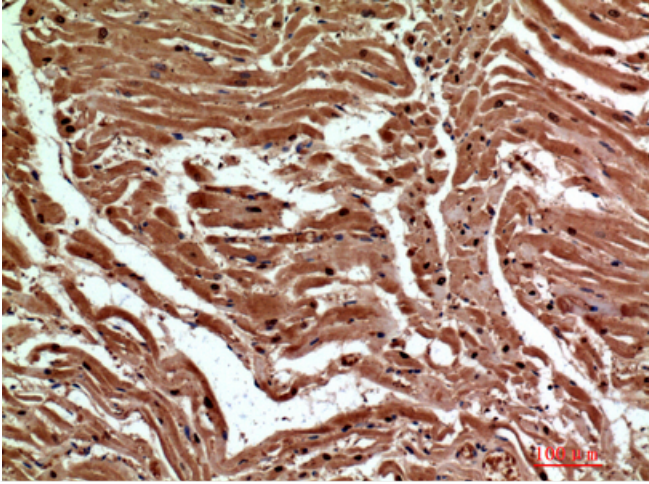


Western blot analysis of SH-SY5Y 293T using Dectin-2 antibody. Antibody was diluted at 1:1000. Secondary antibody(catalog#:RS0002) was diluted at 1:20000

K562



Western blot analysis of K562 using Dectin-2 antibody. Antibody was diluted at 1:1000. Secondary antibody(catalog#:RS0002) was diluted at 1:20000



Immunohistochemical analysis of paraffin-embedded human-heart, antibody was diluted at 1:200