



CD235a Polyclonal Antibody

Catalog No	BYab-14082
Isotype	IgG
Reactivity	Human;Rat;Mouse;
Applications	WB;IHC;IF;ELISA
Gene Name	GYPA
Protein Name	Glycophorin-A
Immunogen	The antiserum was produced against synthesized peptide derived from the Internal region of human GYPA. AA range:41-90
Specificity	CD235a Polyclonal Antibody detects endogenous levels of CD235a protein.
Formulation	Liquid in PBS containing 50% glycerol, 0.5% BSA and 0.02% sodium azide.
Source	Polyclonal, Rabbit,IgG
Purification	The antibody was affinity-purified from rabbit antiserum by affinity-chromatography using epitope-specific immunogen.
Dilution	WB: 1/500 - 1/2000. IHC-p: 1:100-1:300. ELISA: 1/10000.. IF 1:50-200
Concentration	1 mg/ml
Purity	≥90%
Storage Stability	-20°C/1 year
Synonyms	GYPA; GPA; Glycophorin-A; MN sialoglycoprotein; PAS-2; Sialoglycoprotein alpha; CD235a
Observed Band	16kD
Cell Pathway	Cell membrane ; Single-pass type I membrane protein . Appears to be colocalized with SLC4A1.
Tissue Specificity	Blood,Bone marrow,Kidney,Liver,Lung,Miltenberger class V,
Function	function:Glycophorin A is the major intrinsic membrane protein of the erythrocyte. The N-terminal glycosylated segment, which lies outside the erythrocyte membrane, has MN blood group receptors and also binds influenza virus.,online information:Blood group antigen gene mutation database,polymorphism:Along with GYPB, GYPA is responsible for the MNS blood group system.,similarity:Belongs to the glycophorin A family.,
Background	Glycophorins A (GYPA) and B (GYPB) are major sialoglycoproteins of the human erythrocyte membrane which bear the antigenic determinants for the MN and Ss blood groups. In addition to the M or N and S or s antigens that commonly

Nanjing BYabscience technology Co.,Ltd



occur in all populations, about 40 related variant phenotypes have been identified. These variants include all the variants of the Miltenberger complex and several isoforms of Sta, as well as Dantu, Sat, He, Mg, and deletion variants Ena, S-s-U- and Mk. Most of the variants are the result of gene recombinations between GYPA and GYPB. [provided by RefSeq, Jul 2008],

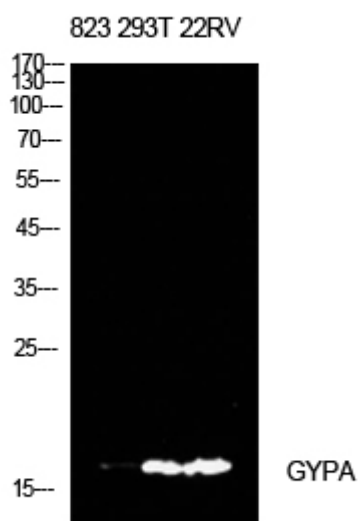
matters needing attention

Avoid repeated freezing and thawing!

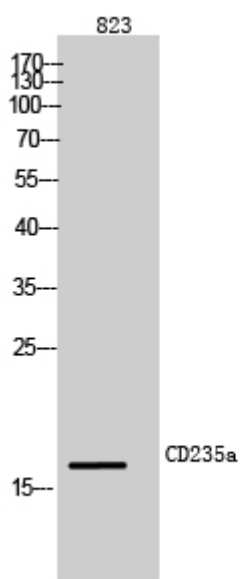
Usage suggestions

This product can be used in immunological reaction related experiments. For more information, please consult technical personnel.

Products Images

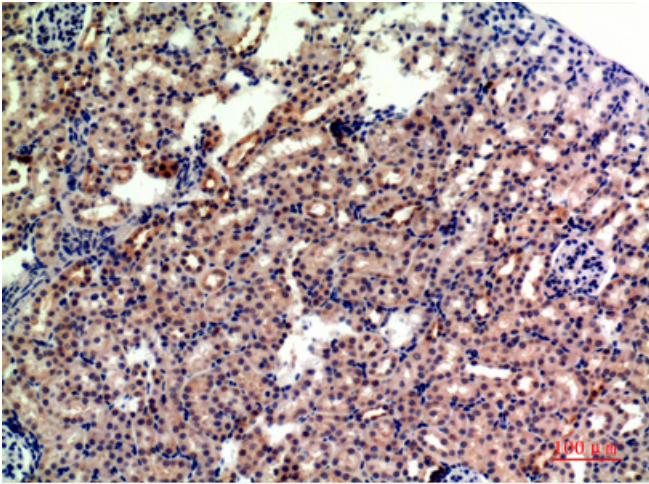


Western Blot analysis of 823, 293T, 22RV cells using CD235a Polyclonal Antibody. Antibody was diluted at 1:500. Secondary antibody(catalog#:RS0002) was diluted at 1:20000

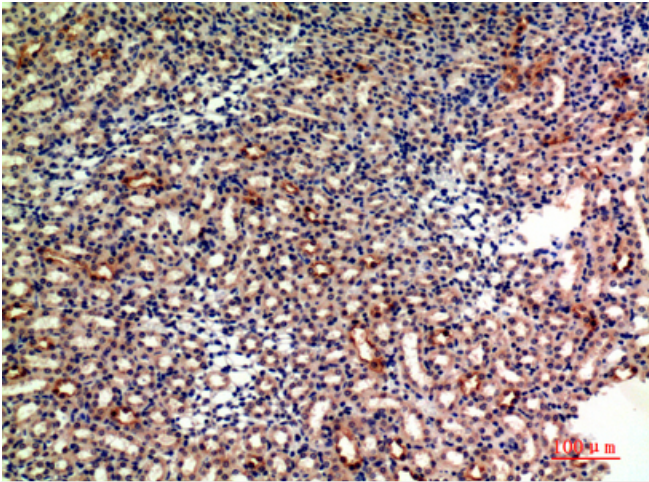


Western Blot analysis of 823 cells using CD235a Polyclonal Antibody diluted at 1:500. Secondary antibody(catalog#:RS0002) was diluted at 1:20000

Nanjing BYabscience technology Co.,Ltd



Immunohistochemical analysis of paraffin-embedded mouse-kidney, antibody was diluted at 1:200



Immunohistochemical analysis of paraffin-embedded mouse-kidney, antibody was diluted at 1:200