



# CD315 Polyclonal Antibody

<b>Catalog No</b>	BYab-14081
<b>Isotype</b>	IgG
<b>Reactivity</b>	Human;Mouse;Rat
<b>Applications</b>	WB;IHC;IF;ELISA
<b>Gene Name</b>	PTGFRN
<b>Protein Name</b>	Prostaglandin F2 receptor negative regulator
<b>Immunogen</b>	The antiserum was produced against synthesized peptide derived from the Internal region of human PTGFRN. AA range:601-650
<b>Specificity</b>	CD315 Polyclonal Antibody detects endogenous levels of CD315 protein.
<b>Formulation</b>	Liquid in PBS containing 50% glycerol, 0.5% BSA and 0.02% sodium azide.
<b>Source</b>	Polyclonal, Rabbit,IgG
<b>Purification</b>	The antibody was affinity-purified from rabbit antiserum by affinity-chromatography using epitope-specific immunogen.
<b>Dilution</b>	Western Blot: 1/500 - 1/2000. IHC-p: 1:100-300 ELISA: 1/20000. IF 1:100-300 Not yet tested in other applications.
<b>Concentration</b>	1 mg/ml
<b>Purity</b>	≥90%
<b>Storage Stability</b>	-20°C/1 year
<b>Synonyms</b>	PTGFRN; CD9P1; EWIF; FPRP; KIAA1436; Prostaglandin F2 receptor negative regulator; CD9 partner 1; CD9P-1; Glu-Trp-Ile EWI motif-containing protein F; EWI-F; Prostaglandin F2-alpha receptor regulatory protein; Prostaglandin F2-alpha receptor-associated protein; CD315
<b>Observed Band</b>	98kD
<b>Cell Pathway</b>	Endoplasmic reticulum membrane ; Single-pass type I membrane protein . Golgi apparatus, trans-Golgi network membrane ; Single-pass type I membrane protein .
<b>Tissue Specificity</b>	Brain,Embryo,Epithelium,Heart,Liver,PCR rescued clones,
<b>Function</b>	function:Inhibits the binding of prostaglandin F2-alpha (PGF2-alpha) to its specific FP receptor, by decreasing the receptor number rather than the affinity constant. Functional coupling with the prostaglandin F2-alpha receptor seems to occur.,sequence caution:Translated as Gln.,similarity:Contains 6 Ig-like C2-type (immunoglobulin-like) domains.,subunit:Interacts with CD9 and CD81. Also seems to interacts with CD63, CD82 and CD151.,

Nanjing BYabscience technology Co.,Ltd



**Background**

function:Inhibits the binding of prostaglandin F2-alpha (PGF2-alpha) to its specific FP receptor, by decreasing the receptor number rather than the affinity constant. Functional coupling with the prostaglandin F2-alpha receptor seems to occur.,sequence caution:Translated as Gln.,similarity:Contains 6 Ig-like C2-type (immunoglobulin-like) domains.,subunit:Interacts with CD9 and CD81. Also seems to interact with CD63, CD82 and CD151.,

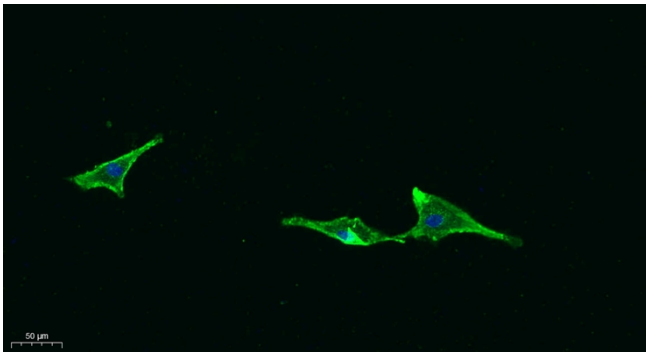
**matters needing attention**

Avoid repeated freezing and thawing!

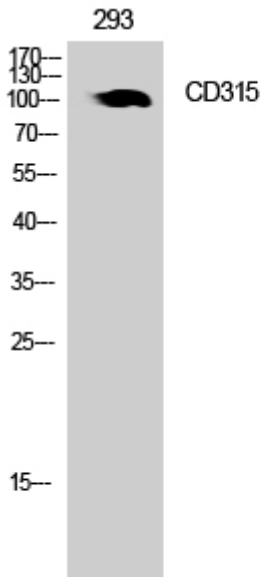
**Usage suggestions**

This product can be used in immunological reaction related experiments. For more information, please consult technical personnel.

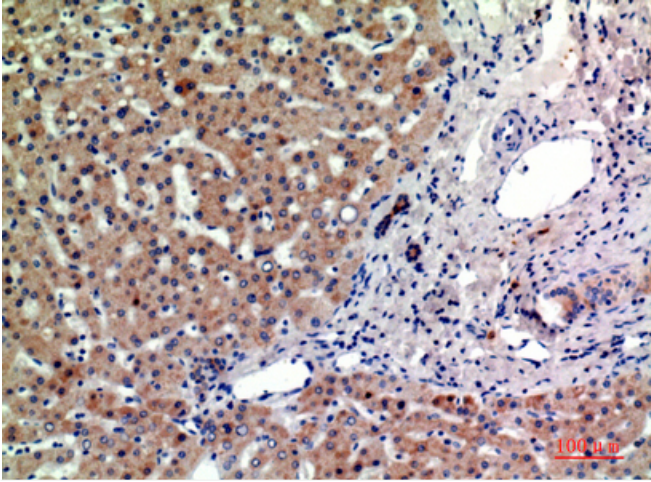
**Products Images**



Immunofluorescence analysis of A549. 1,primary Antibody was diluted at 1:200(4°C overnight). 2, Goat Anti Rabbit IgG (H&L) - Alexa Fluor 488 Secondary antibody was diluted at 1:1000(room temperature, 50min).3, Picture B: DAPI(blue) 10min.



Western Blot analysis of 293 cells using CD315 Polyclonal Antibody. Secondary antibody(catalog#:RS0002) was diluted at 1:20000



Immunohistochemical analysis of paraffin-embedded human-liver, antibody was diluted at 1:200