



CD244 Polyclonal Antibody

Catalog No	BYab-14067
Isotype	IgG
Reactivity	Human;Rat;Mouse;
Applications	WB;IHC;IF;ELISA
Gene Name	CD244
Protein Name	Natural killer cell receptor 2B4
Immunogen	The antiserum was produced against synthesized peptide derived from the Internal region of human CD244. AA range:101-150
Specificity	CD244 Polyclonal Antibody detects endogenous levels of CD244 protein.
Formulation	Liquid in PBS containing 50% glycerol, 0.5% BSA and 0.02% sodium azide.
Source	Polyclonal, Rabbit,IgG
Purification	The antibody was affinity-purified from rabbit antiserum by affinity-chromatography using epitope-specific immunogen.
Dilution	WB: 1/500 - 1/2000. IHC-p: 1:100-1:300. ELISA: 1/10000.. IF 1:50-200
Concentration	1 mg/ml
Purity	≥90%
Storage Stability	-20°C/1 year
Synonyms	CD244; 2B4; Natural killer cell receptor 2B4; NK cell activation-inducing ligand; NAIL; NK cell type I receptor protein 2B4; NKR2B4; h2B4; CD244
Observed Band	42kD
Cell Pathway	Membrane ; Single-pass type I membrane protein . Cell membrane . Receptor engagement results in a recruitment to lipid drafts essential for the subsequent tyrosine phosphorylation of the ITSMs. .
Tissue Specificity	Expressed in spleen, PBL, followed by lung, liver, testis and small intestine. Expressed in all natural killer (NK) cells, monocytes and basophils, TCR-gamma/delta+ T-cells, monocytes, basophils, and on a subset of CD8(+) T-cells.
Function	function:Modulate other receptor-ligand interactions to enhance leukocyte activation.,PTM:Phosphorylated.,similarity:Contains 2 Ig-like (immunoglobulin-like) domains.,subunit:Interacts with CD48. Following phosphorylation, it is able to recruit PTPN11/SHP-2 and SH2D1A/SAP. Binding of SH2D1A/SAP to CD244 prevents its association with PTPN11/SHP-2.,tissue specificity:Expressed in spleen, PBL, followed by lung, liver, testis and small intestine. Expressed not only in NK cells, but also on monocytes and basophils.,

Nanjing BYabscience technology Co.,Ltd



Background

This gene encodes a cell surface receptor expressed on natural killer (NK) cells (and some T cells) that mediate non-major histocompatibility complex (MHC) restricted killing. The interaction between NK-cell and target cells via this receptor is thought to modulate NK-cell cytolytic activity. Alternatively spliced transcript variants encoding different isoforms have been found for this gene.[provided by RefSeq, Oct 2009],

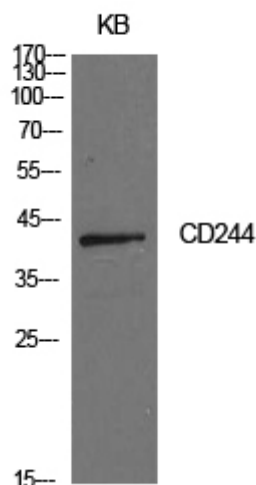
matters needing attention

Avoid repeated freezing and thawing!

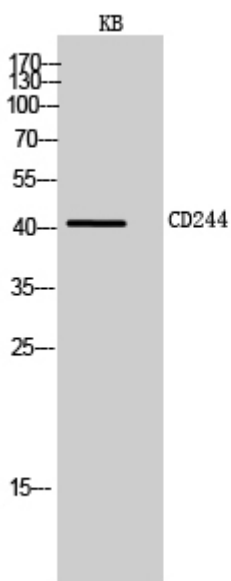
Usage suggestions

This product can be used in immunological reaction related experiments. For more information, please consult technical personnel.

Products Images

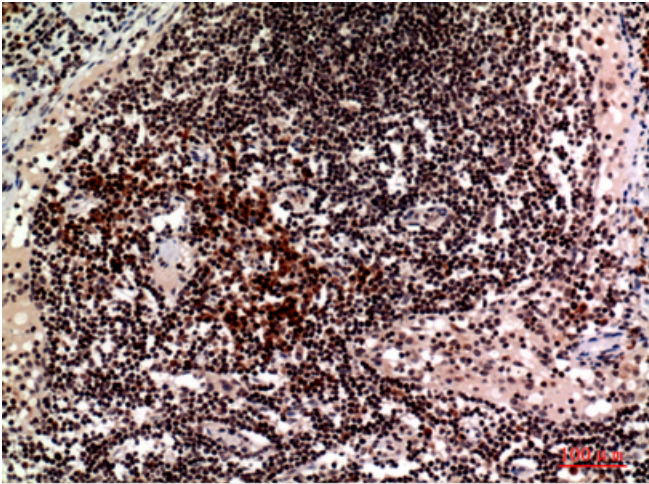


Western Blot analysis of KB cells using CD244 Polyclonal Antibody. Secondary antibody(catalog#:RS0002) was diluted at 1:20000

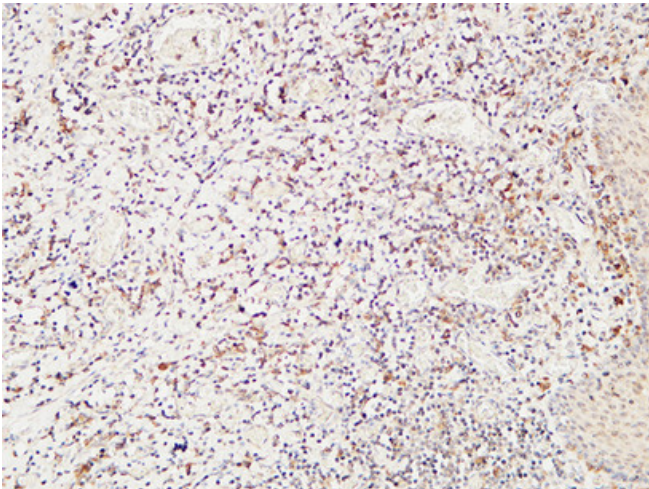


Western Blot analysis of KB cells using CD244 Polyclonal Antibody. Secondary antibody(catalog#:RS0002) was diluted at 1:20000

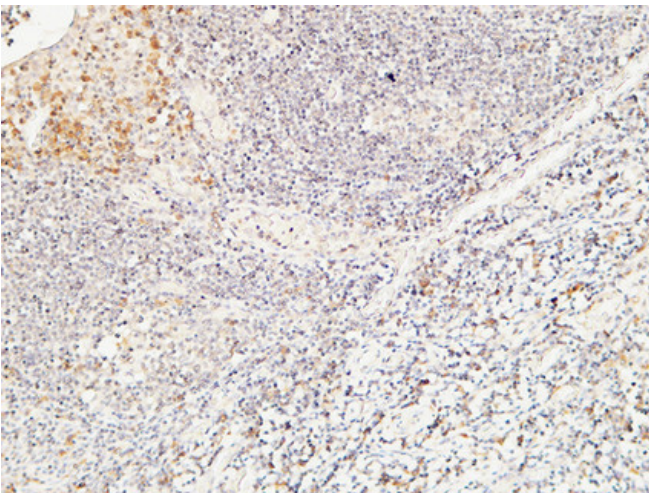
Nanjing BYabscience technology Co.,Ltd



Immunohistochemical analysis of paraffin-embedded human-lymph, antibody was diluted at 1:100



Immunohistochemical analysis of paraffin-embedded Human Amygdala. 1, Antibody was diluted at 1:200(4° overnight). 2, High-pressure and temperature EDTA, pH8.0 was used for antigen retrieval. 3, Secondary antibody was diluted at 1:200(room temperature, 30min).



Immunohistochemical analysis of paraffin-embedded Human Amygdala. 1, Antibody was diluted at 1:200(4° overnight). 2, High-pressure and temperature EDTA, pH8.0 was used for antigen retrieval. 3, Secondary antibody was diluted at 1:200(room temperature, 30min).