



HLA-DQB1/2 Polyclonal Antibody

| | |
|---------------------------|---|
| Catalog No | BYab-14040 |
| Isotype | IgG |
| Reactivity | Human |
| Applications | WB;IHC;IF;ELISA |
| Gene Name | HLA-DQB1/HLA-DQB2 |
| Protein Name | HLA class II histocompatibility antigen DQ beta 1 chain/HLA class II histocompatibility antigen DQ beta 2 chain |
| Immunogen | The antiserum was produced against synthesized peptide derived from the Internal region of human HLA-DQB1/HLA-DQB2. AA range:131-180 |
| Specificity | HLA-DQB1/2 Polyclonal Antibody detects endogenous levels of HLA-DQB1/2 protein. |
| Formulation | Liquid in PBS containing 50% glycerol, 0.5% BSA and 0.02% sodium azide. |
| Source | Polyclonal, Rabbit,IgG |
| Purification | The antibody was affinity-purified from rabbit antiserum by affinity-chromatography using epitope-specific immunogen. |
| Dilution | WB: 1/500 - 1/2000. IHC-p: 1/100-1/300. ELISA: 1/20000.. IF 1:50-200 |
| Concentration | 1 mg/ml |
| Purity | ≥90% |
| Storage Stability | -20°C/1 year |
| Synonyms | HLA-DQB1; HLA-DQB; HLA class II histocompatibility antigen, DQ beta 1 chain; MHC class II antigen DQB1; HLA-DQB2; HLA-DXB; HLA class II histocompatibility antigen, DQ beta 2 chainHLA class II histocompatibility antigen, DX beta chain; MHC class II antigen DQB2 |
| Observed Band | 30kD |
| Cell Pathway | Cell membrane; Single-pass type I membrane protein. Endoplasmic reticulum membrane; Single-pass type I membrane protein. Golgi apparatus, trans-Golgi network membrane; Single-pass type I membrane protein. Endosome membrane; Single-pass type I membrane protein. Lysosome membrane; Single-pass type I membrane protein. The MHC class II complex transits through a number of intracellular compartments in the endocytic pathway until it reaches the cell membrane for antigen presentation. |
| Tissue Specificity | B-cell,Blood,Colon,Peripheral blood,Peripheral bloo |
| Function | caution:PubMed:6954511 have called the protein an HLA-DR antigen-like beta-chain.,online information:The Singapore human mutation and polymorphism |

Nanjing BYabscience technology Co.,Ltd



database,similarity:Belongs to the MHC class II family.,similarity:Contains 1 Ig-like C1-type (immunoglobulin-like) domain.,

Background

major histocompatibility complex, class II, DQ beta 1(HLA-DQB1) Homo sapiens HLA-DQB1 belongs to the HLA class II beta chain paralogs. This class II molecule is a heterodimer consisting of an alpha (DQA) and a beta chain (DQB), both anchored in the membrane. It plays a central role in the immune system by presenting peptides derived from extracellular proteins. Class II molecules are expressed in antigen presenting cells (APC: B lymphocytes, dendritic cells, macrophages). The beta chain is approximately 26-28 kDa and it contains six exons. Exon 1 encodes the leader peptide, exons 2 and 3 encode the two extracellular domains, exon 4 encodes the transmembrane domain and exon 5 encodes the cytoplasmic tail. Within the DQ molecule both the alpha chain and the beta chain contain the polymorphisms specifying the peptide binding specificities, resulting in up to four different molecules. Typing for these polymorphisms is routinely done for bone marrow

matters needing attention

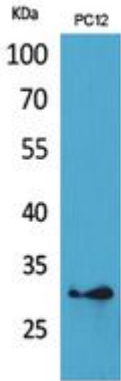
Avoid repeated freezing and thawing!

Usage suggestions

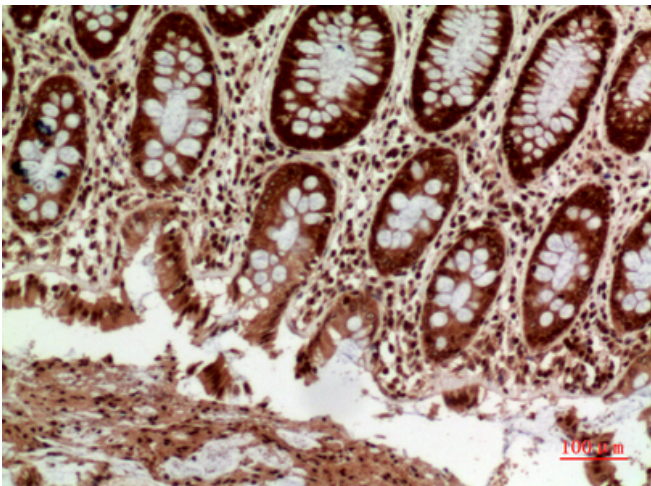
This product can be used in immunological reaction related experiments. For more information, please consult technical personnel.



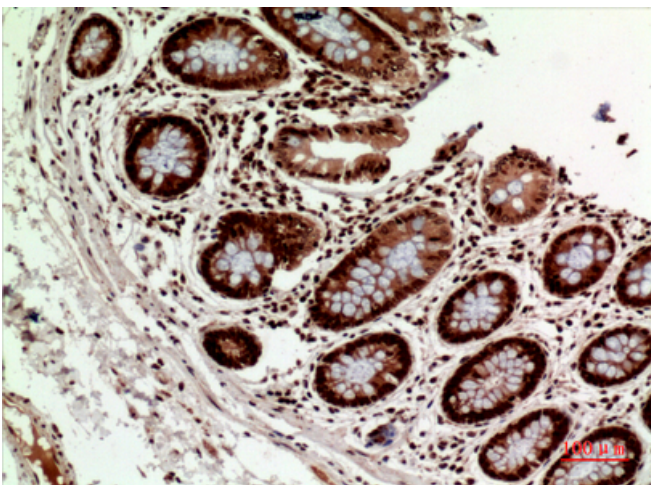
Products Images



Western Blot analysis of PC12 cells using HLA-DQB1/2 Polyclonal Antibody. Secondary antibody(catalog#:RS0002) was diluted at 1:20000



Immunohistochemical analysis of paraffin-embedded human-colon, antibody was diluted at 1:100



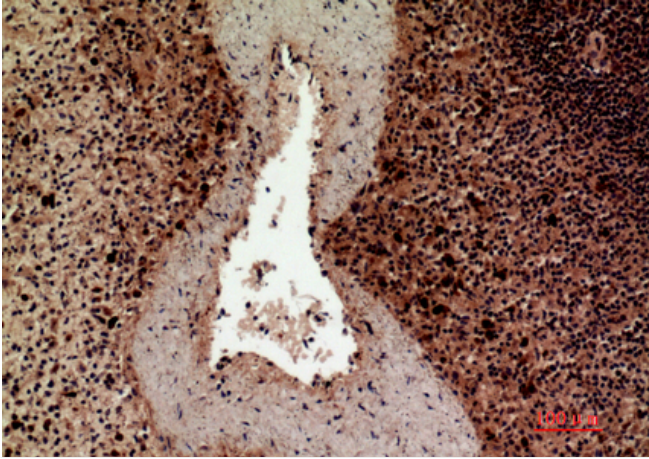
Immunohistochemical analysis of paraffin-embedded human-colon, antibody was diluted at 1:100

Nanjing BYabscience technology Co.,Ltd

网址: www.njbybio.com

官方热线: 025-5229-8998

监督电话: 15950492658



Immunohistochemical analysis of paraffin-embedded human-spleen, antibody was diluted at 1:100