



# CD225 Polyclonal Antibody

<b>Catalog No</b>	BYab-14035
<b>Isotype</b>	IgG
<b>Reactivity</b>	Human;Rat;Mouse;
<b>Applications</b>	WB;IHC;IF;ELISA
<b>Gene Name</b>	IFITM1
<b>Protein Name</b>	Interferon-induced transmembrane protein 1
<b>Immunogen</b>	The antiserum was produced against synthesized peptide derived from the N-terminal region of human IFITM1. AA range:1-50
<b>Specificity</b>	CD225 Polyclonal Antibody detects endogenous levels of CD225 protein.
<b>Formulation</b>	Liquid in PBS containing 50% glycerol, 0.5% BSA and 0.02% sodium azide.
<b>Source</b>	Polyclonal, Rabbit,IgG
<b>Purification</b>	The antibody was affinity-purified from rabbit antiserum by affinity-chromatography using epitope-specific immunogen.
<b>Dilution</b>	WB: 1/500 - 1/2000. IHC-p: 1/100-1/300. ELISA: 1/20000.. IF 1:50-200
<b>Concentration</b>	1 mg/ml
<b>Purity</b>	≥90%
<b>Storage Stability</b>	-20°C/1 year
<b>Synonyms</b>	IFITM1; CD225; IFI17; Interferon-induced transmembrane protein 1; Dispanin subfamily A member 2a; DSPA2a; Interferon-induced protein 17; Interferon-inducible protein 9-27; Leu-13 antigen; CD225
<b>Observed Band</b>	15kD
<b>Cell Pathway</b>	Cell membrane ; Single-pass membrane protein . Lysosome membrane .
<b>Tissue Specificity</b>	Bone (at protein level). Levels greatly elevated in colon cancer, cervical cancer, esophageal cancer and ovarian cancer. Expressed in glioma cell lines.
<b>Function</b>	function:Implicated in the control of cell growth. Component of a multimeric complex involved in the transduction of antiproliferative and homotypic adhesion signals.,induction:By alpha and gamma interferons.,similarity:Belongs to the CD225 family.,
<b>Background</b>	function:Implicated in the control of cell growth. Component of a multimeric complex involved in the transduction of antiproliferative and homotypic adhesion signals.,induction:By alpha and gamma interferons.,similarity:Belongs to the CD225 family.,

Nanjing BYabscience technology Co.,Ltd



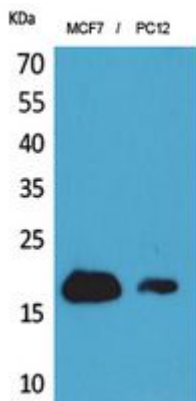
**matters needing attention**

Avoid repeated freezing and thawing!

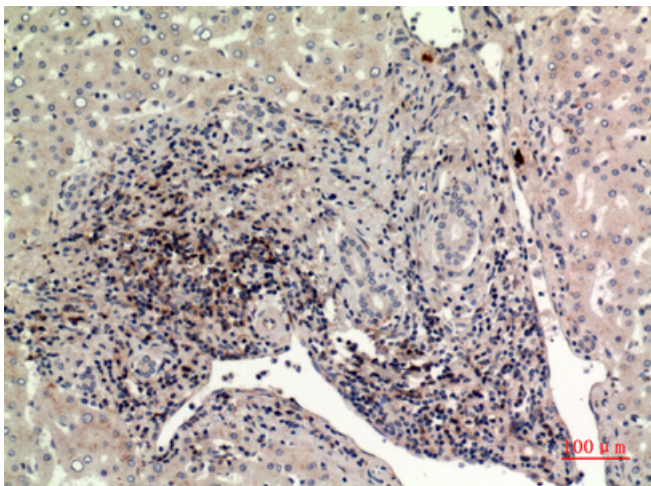
**Usage suggestions**

This product can be used in immunological reaction related experiments. For more information, please consult technical personnel.

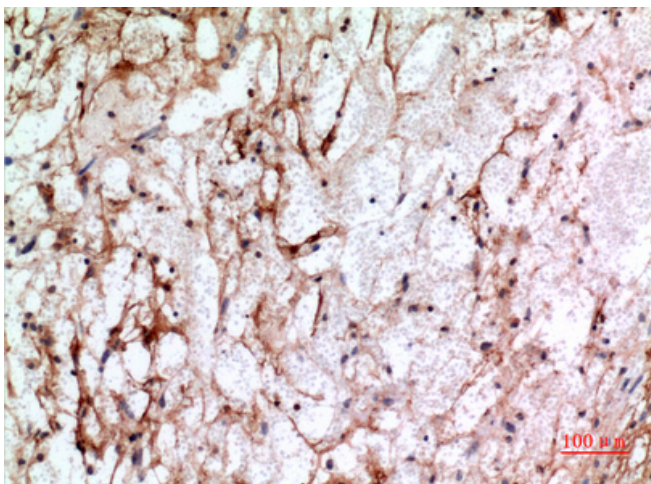
**Products Images**



Western Blot analysis of MCF7, PC12 cells using CD225 Polyclonal Antibody. Secondary antibody(catalog#:RS0002) was diluted at 1:20000

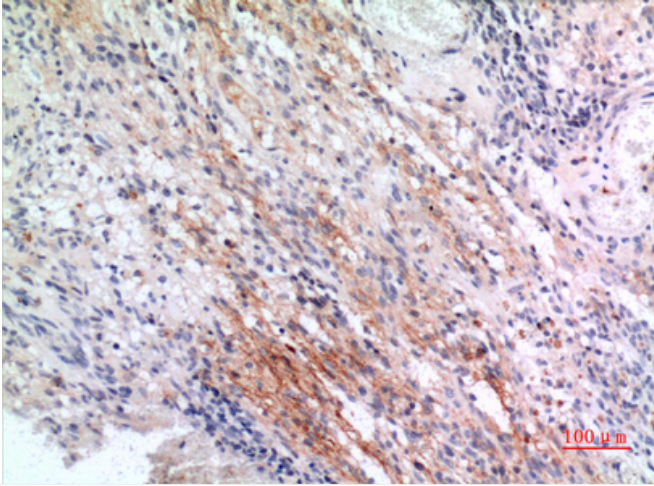


Immunohistochemical analysis of paraffin-embedded human-liver, antibody was diluted at 1:100



Immunohistochemical analysis of paraffin-embedded human-brain, antibody was diluted at 1:100

**Nanjing BYabscience technology Co.,Ltd**



Immunohistochemical analysis of paraffin-embedded human-brain, antibody was diluted at 1:100