



# CD85f Polyclonal Antibody

<b>Catalog No</b>	BYab-14029
<b>Isotype</b>	IgG
<b>Reactivity</b>	Human;Rat;Mouse;
<b>Applications</b>	WB;ELISA
<b>Gene Name</b>	LILRA5
<b>Protein Name</b>	Leukocyte immunoglobulin-like receptor subfamily A member 5
<b>Immunogen</b>	The antiserum was produced against synthesized peptide derived from the Internal region of human LILRA5. AA range:141-190
<b>Specificity</b>	CD85f Polyclonal Antibody detects endogenous levels of CD85f protein.
<b>Formulation</b>	Liquid in PBS containing 50% glycerol, 0.5% BSA and 0.02% sodium azide.
<b>Source</b>	Polyclonal, Rabbit,IgG
<b>Purification</b>	The antibody was affinity-purified from rabbit antiserum by affinity-chromatography using epitope-specific immunogen.
<b>Dilution</b>	Western Blot: 1/500 - 1/2000. ELISA: 1/20000. Not yet tested in other applications.
<b>Concentration</b>	1 mg/ml
<b>Purity</b>	≥90%
<b>Storage Stability</b>	-20°C/1 year
<b>Synonyms</b>	LILRA5; ILT11; LILRB7; LIR9; Leukocyte immunoglobulin-like receptor subfamily A member 5; CD85 antigen-like family member F; Immunoglobulin-like transcript 11; ILT-11; Leukocyte immunoglobulin-like receptor 9; LIR-9; CD85f
<b>Observed Band</b>	33kD
<b>Cell Pathway</b>	Cell membrane ; Single-pass type I membrane protein .; [Isoform 3]: Secreted .
<b>Tissue Specificity</b>	Expressed mostly in tissues of the hematopoietic system, including bone marrow, spleen, lymph node and peripheral leukocytes. Among leukocytes, monocytes and neutrophils express the highest level. Expressed in CD14+ monocytes, but not in T-cells, B-cells or natural killer (NK) cells (at protein level).
<b>Function</b>	function:May plays a role in triggering innate immune responses. Seems not play a role for any class I MHC antigens recognition.,similarity:Contains 2 Ig-like C2-type (immunoglobulin-like) domains.,tissue specificity:Expressed mostly in tissues of the hematopoietic system, including bone marrow, spleen, lymph node and peripheral leukocytes. Among leukocytes, monocytes and neutrophils express the highest level. Expressed in CD14+ monocytes, but not in T-cells,

Nanjing BYabscience technology Co.,Ltd



B-cells or natural killer (NK) cells (at protein level).

### Background

The protein encoded by this gene is a member of the leukocyte immunoglobulin-like receptor (LIR) family. LIR family members are known to have activating and inhibitory functions in leukocytes. Crosslink of this receptor protein on the surface of monocytes has been shown to induce calcium flux and secretion of several proinflammatory cytokines, which suggests the roles of this protein in triggering innate immune responses. This gene is one of the leukocyte receptor genes that form a gene cluster on the chromosomal region 19q13.4. Four alternatively spliced transcript variants encoding distinct isoforms have been described. [provided by RefSeq, Jul 2008],

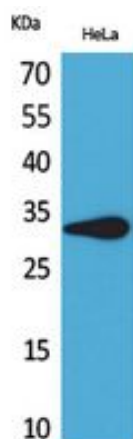
### matters needing attention

Avoid repeated freezing and thawing!

### Usage suggestions

This product can be used in immunological reaction related experiments. For more information, please consult technical personnel.

## Products Images



Western Blot analysis of HeLa cells using CD85f Polyclonal Antibody. Secondary antibody(catalog#:RS0002) was diluted at 1:20000

Nanjing BYabscience technology Co.,Ltd